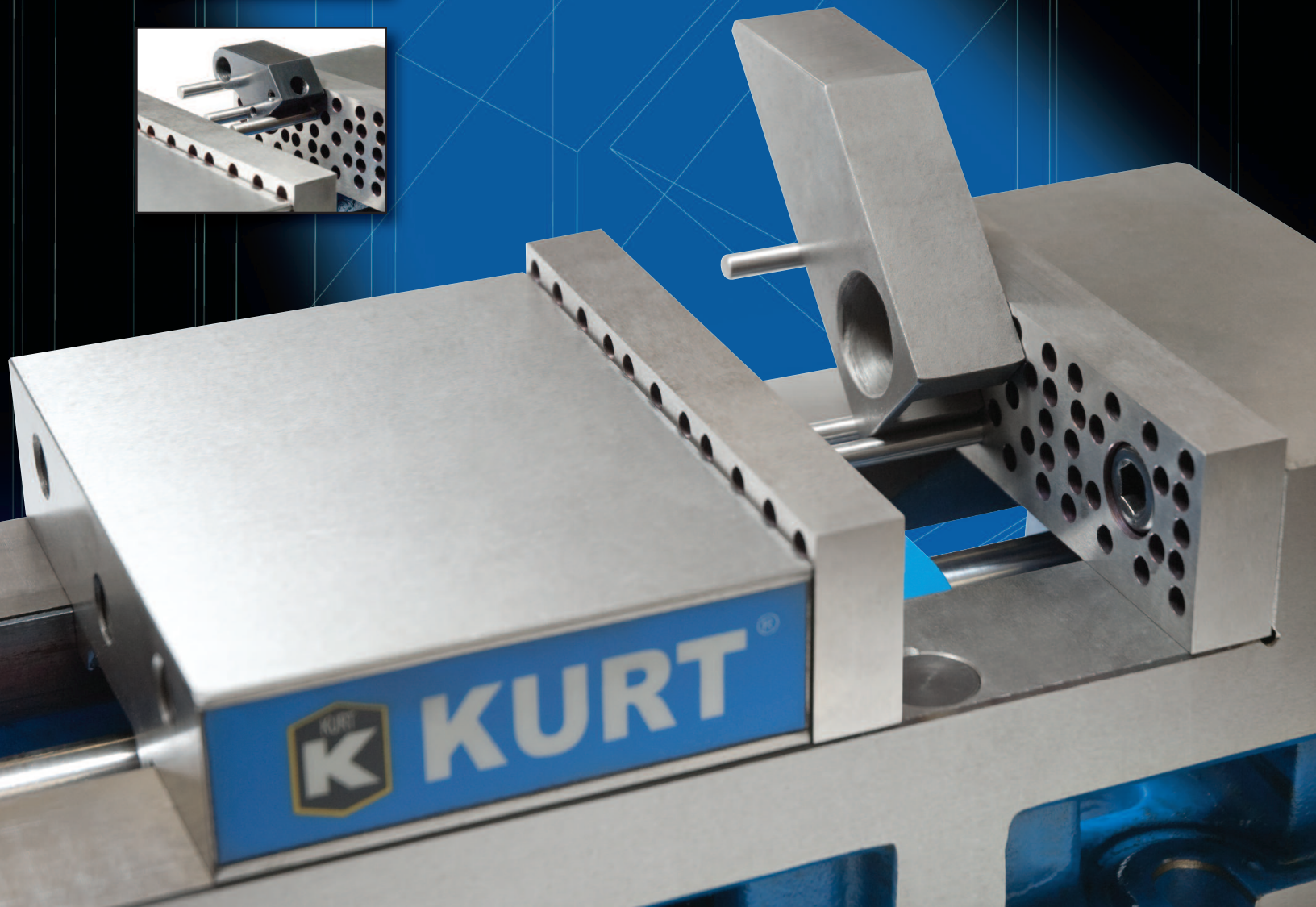
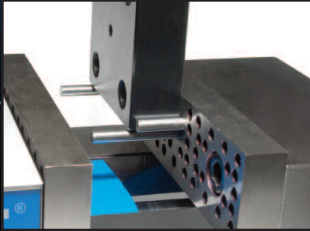


NEW!



3-In-One System Jaw Plates

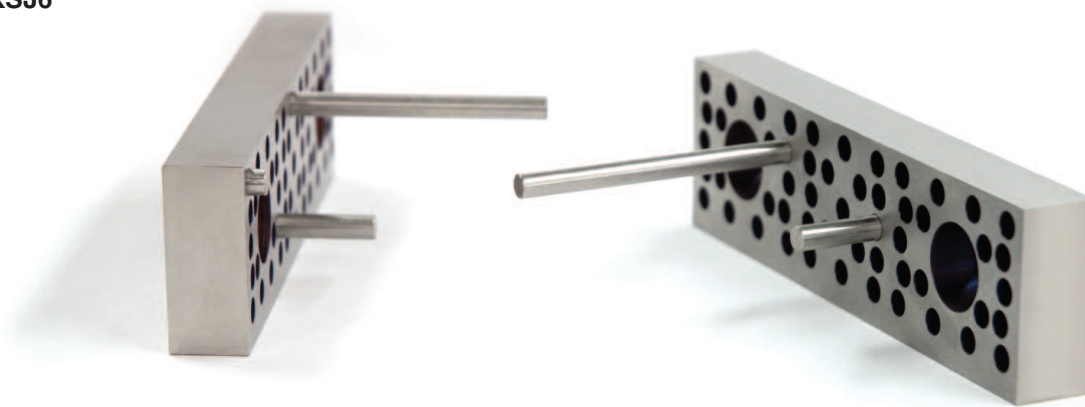
- 7 preset angles built into the jaws
- Workstop capability
- Parallel capability
- Eliminates time consuming setups





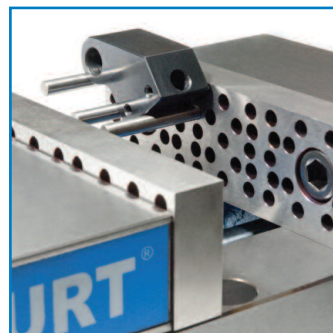
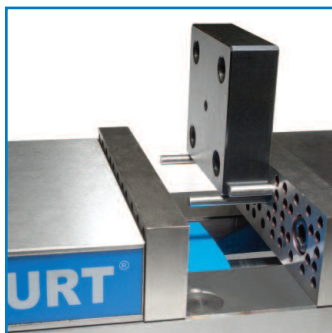
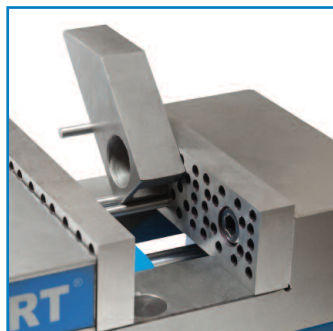
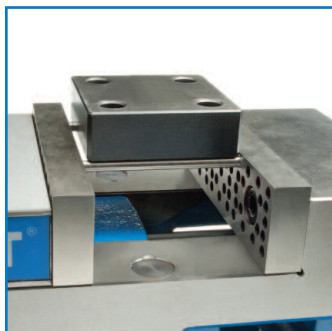
3-IN-ONE SYSTEM JAW PLATES

Model: KSJ6

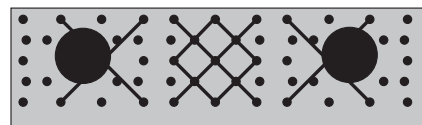


Features:

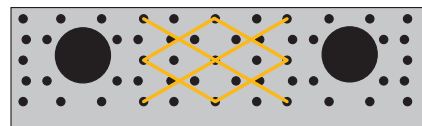
- Ideal for quick setups of common angle cuts.
- Preset patterns in jaws provide for these 7 popular angles: 5°, 10°, 15°, 20°, 25°, 30°, 45°.
- Tolerance between holes 0.0004" (0.01mm)
- Jaw dimensions:
6" x 1.735" x 0.725" ± 0.000787 " (± 0.02 mm)
- Pins Sets Included are:
 - 4 ea 6mm x 22mm • 3 ea 6mm x 40mm
 - 3 ea 6mm x 58mm • 3 ea 6mm x 76mm
- Pin Sets Dimensional Tolerance: ± 0.0007 " (0.018mm)
- Doubles as a convenient workstop, Triples as a parallel.
Does the work of 3 products.



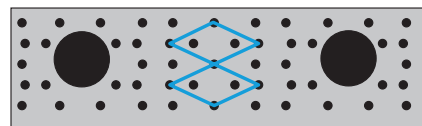
45°



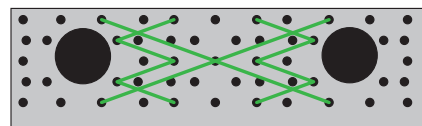
30°



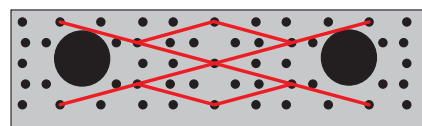
25°



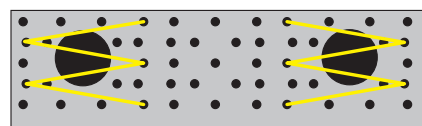
20°



15°



10°



5°

