

T-A Pro[®]

The **best** just got **better**.

Ø 0.437" - 1.882" (11.10 mm - 47.80 mm)



Optimized flute design



ISO-specific geometries



Proprietary coolant outlets



Lengths from 1xD to 15xD



**ALLIED MACHINE
& ENGINEERING** | **THE HOLEMAKING
EXPERTS**

Holemaking Solutions for Today's Manufacturing

TOOLING
NEW
SOLUTIONS

BUY 6 CARBIDE INSERTS
GET YOUR HOLDER^{*}
FREE

CODE: PI69

ends 07/31/2024



Productivity Inc.

TOOLING & ACCESSORIES

www.productivity.com

MINNESOTA
(763) 476-4196

NEBRASKA
(402) 330-2323

IOWA
(319) 734-3409

DENVER
(303) 757-2093

SALT LAKE CITY
(801) 521-1716

* Inserts must be P, K, N, or M geometry and the same series as the holder (10xD or less).



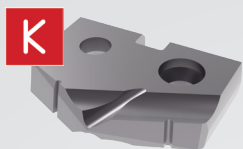
REDESIGNED INSERTS (e.g. TAP1-91.05)

Ø 0.437" - 1.882" (11.10 mm - 47.80 mm)



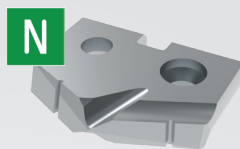
STEELS

- Designed to provide increased penetration rates and tool life in steel applications.
- Excellent chip control with superior geometry and edge.
- Increased heat resistance and improved tool life with Allied's multilayer AM300 coating.



CAST IRONS

- Uniquely designed for cast/nodular iron applications.
- Geometry that provides maximum tool life, reduced exit burr, and improved hole finish.
- Increased abrasion resistance and tool life with Allied's multilayer TiAlN coating.



NONFERROUS

- Designed for applications in aluminum, brass, and copper.
- Geometry that yields excellent chip control in these softer materials.
- TiCN coating for versatility to run in a variety of materials while reducing buildup.



STAINLESS STEEL

- Designed for all stainless steels and heat resistant super alloy (HRSA) materials.
- Optimized geometry for improved chip formation while minimizing exit burr.
- Industry leading tool life in stainless and HRSA materials with Allied's new AM460 coating.

REDESIGNED HOLDERS

(e.g. HTA1B05-100F)

NEW HOLDER DESIGN
Optimized flute design to **prevent chip packing** from slowing you down

NEW COOLANT DESIGN
Proprietary coolant outlet configuration provides **superior** cooling even in **low-coolant applications**

NEW INSERT DESIGN
ISO-specific geometries with a new point design to **simplify** your insert choices

Lengths from **1xD** to **15xD**

Stocked in 1xD, 3xD, 5xD, 7xD, 10xD, 12xD & 15xD

Note: For optimal performance, T-A Pro inserts should be used with T-A Pro holders.



TOOLING & ACCESSORIES
www.productivity.com

MINNESOTA (763) 476-4196	NEBRASKA (402) 330-2323	IOWA (319) 734-3409
DENVER (303) 757-2093	SALT LAKE CITY (801) 521-1716	

CONTACT YOUR LOCAL FIELD SALES ENGINEERS (FSES) FOR ASSISTANCE WITH ANY APPLICATION.

Kevin Alexander
Nebraska
(402) 332-8327

Ryan Brown
Denver/Salt Lake City
(801) 830-7445

Nate Miller
Iowa
(319) 214-0672

Greg Johnson
Minnesota
(612) 812-8262

Kevin Lillquist
Minnesota
(218) 341-4859

Allied Machine offers expert engineering support. Whether you need a quote, a test, or an application solution, a highly skilled and trained engineer is standing by, ready to help.
www.alliedmachine.com/contactus

Copyright © 2024 Allied Machine and Engineering Corp. – All rights reserved.
All trademarks designated with the ® symbol are registered in the United States and other countries.



ALLIED MACHINE
& ENGINEERING

WOHLHAUPTER®

Holemaking Solutions for Today's Manufacturing