



1st half **2024**  
**PROMOTIONS**

Leading in Innovation



*Valid from 1st January to 30th June, 2024*

[www.tungaloy.com/us](http://www.tungaloy.com/us)

# SH7025

Valid from 1st January to 30th June, 2024



## ACHIEVE ULTIMATE SURFACE QUALITY MACHINING SMALL PARTS RELIABLY!

A unique design that prevents adhesion, wear, and chipping of the cutting edge, ensuring prolonged life and consistently high-quality machined surfaces.

**BUY 40** inserts

AND

**GET 10** corresponding  
inserts

**FREE**  
*of charge!*

Insert geometry:

CCGT

DCGT

VBGT

VPGT

Chipbreaker type:

01

J10

JP

JS

W08



Video



For more  
information

Member IMC Group  
**Tungaloy**



## MODULAR HEAD TURNING TOOLHOLDER SYSTEM FOR SWISS MACHINES

Significantly reduces machine downtime for changing tools and setups

**BUY 1 head and 10 inserts**

AND

**GET 1** corresponding  
CHP head

**50 %  
additional  
discount!**

**BUY 1 head and 10 inserts**

AND

**GET 1** corresponding  
shank

**FREE  
of charge!**



### ModuMiniTurn inserts (Turning)

DX\*U07  
VXGU09  
WXGU04

### MiniV-LockGroove inserts (Grooving & Threading)

VGP10  
VGT10

### TetraMiniCut (Grooving & Threading)

TCG18...  
TCP18...  
TCS18...  
TCL18...  
TCF18...  
TCT18...

### Inserts:

11ER... (Threading)  
J10R... (Back turning)

### TungCut inserts (Grooving)

DGM...  
DGS...  
DTE...  
DTX...  
DTR...  
DTM...  
DGL...

CW = 0.047" - 0.125"

### Grades:

AH6235, AH7025, AH8005,  
AH905, KS05F, NS9530,  
T9225, T515

### AH725

(DGS1.2-003, DGS1.4-005,  
DGS1.4-010, DGS2-005,  
DGS2-010)

Video



For more  
information

## EFFECTIVE THREADING SOLUTIONS FOR CNC LATHES, SWISS-TYPE LATHES AND MULTITASKING MACHINES

AH8015 versatile PVD grade for superior wear and chipping resistance in a wide range of materials

**BUY 20** inserts

AND

**GET 5** corresponding  
inserts

**FREE**  
of charge!

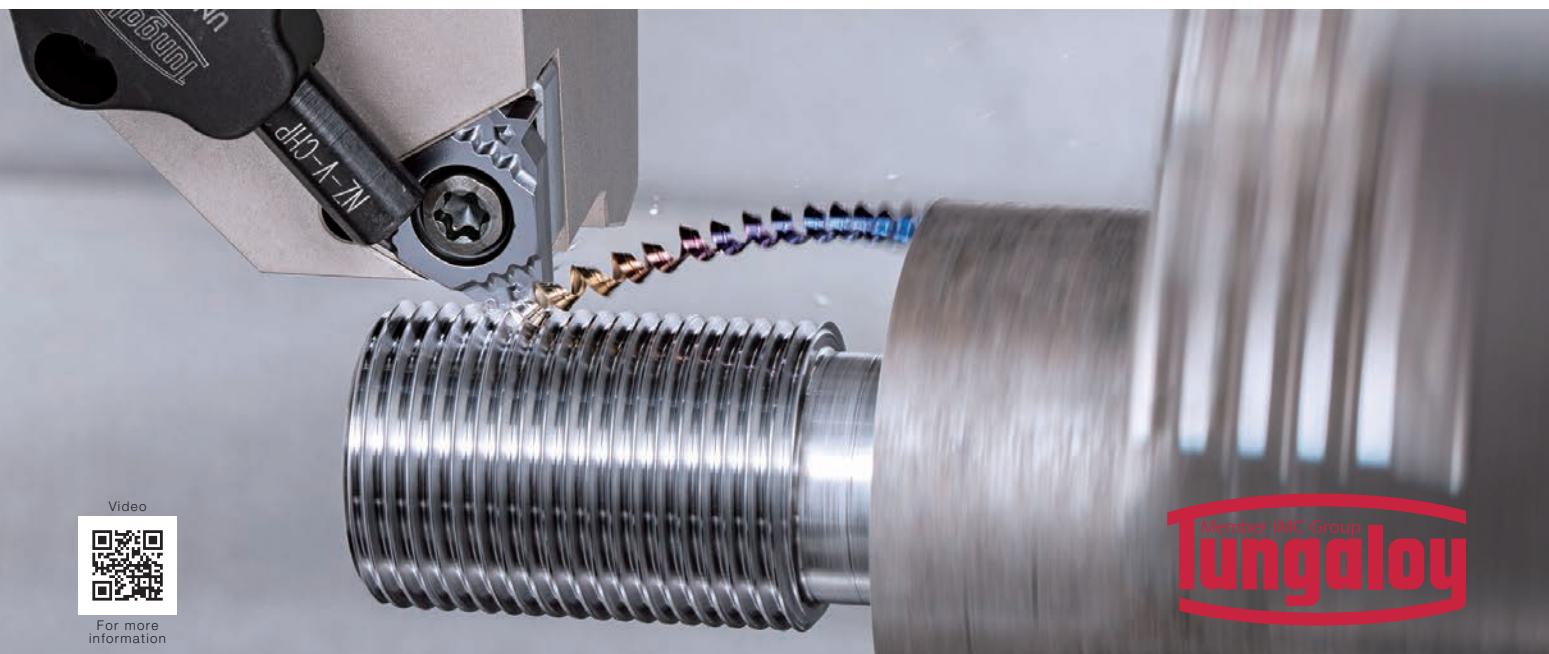
Insert:

3-cornered inserts sizes 11, 16 and 22

1-cornered insert size 6

Grade:

AH8015



Video



For more  
information



## THREADING INSERTS WITH ECONOMICAL 4-CUTTING EDGES

Sharp cutting edge for reduced cutting load, improving thread surface quality.  
Suitable for thread pitches ranging from 0.4 mm to 3 mm (8 - 64 TPI).

**BUY 10** inserts

AND

**GET 1** toolholder at

**50 %**  
*additional discount!*

### Insert:

TCT18R...-ISO (Full Profile insert) Pitch = 0.5 – 1.5 mm (16 - 48 TPI)

TCT18R...-UN (Full Profile insert) TPI = 16 - 32

TCT18R...-UNJ (Full Profile insert) TPI = 28 - 32

TCT18R...-W (Full Profile insert) TPI = 11 - 28

TCT18FR/R/L-60...(Partial profile insert) Pitch = 0.4 – 3.0 mm (8 - 64 TPI)

TCT18R/L-55...(Partial profile insert) TPI = 8 – 28

### Grade:

AH725

AH8015

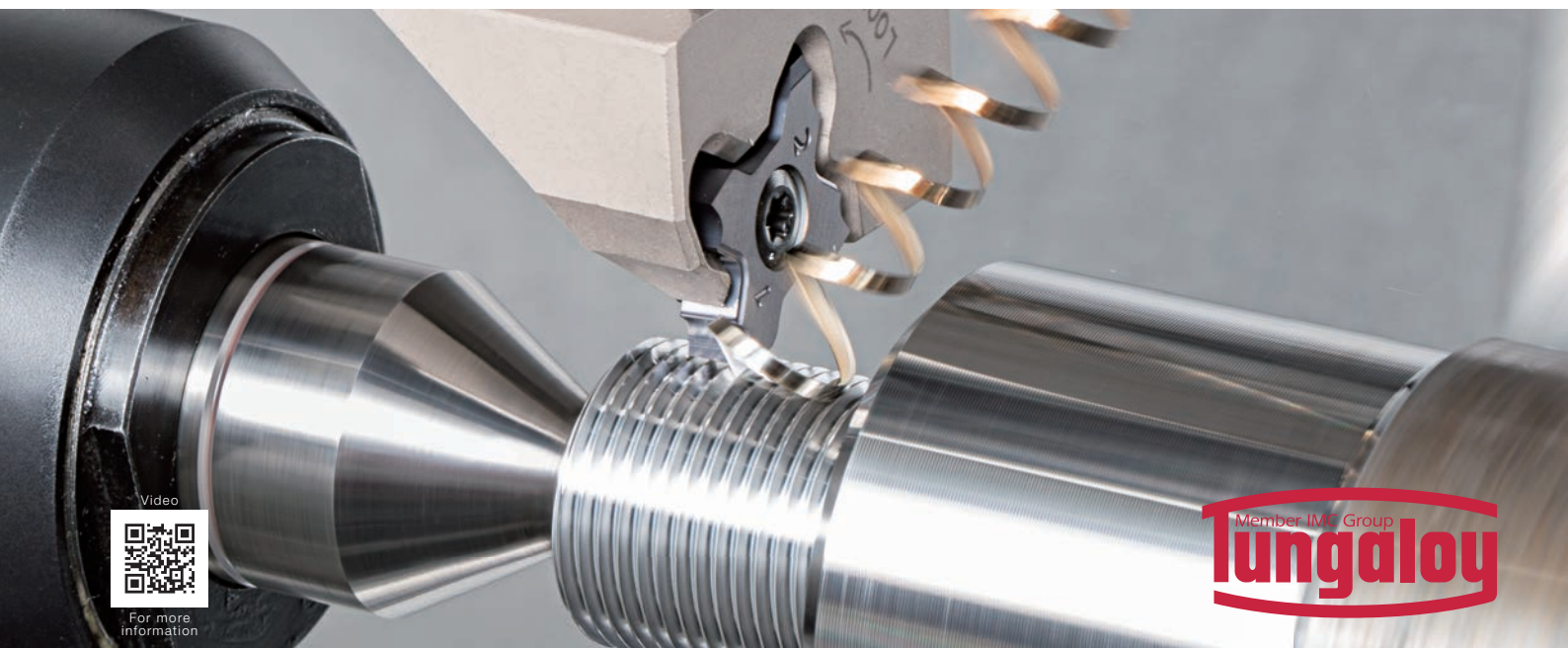
SH725



TCT18\*\*\*-55/60...  
Partial profile



TCT18...-ISO/UN/UNJ/W  
Full profile



Video



For more information

## SUPERB STABILITY AND PRODUCTIVITY IN DEEP GROOVING AND PARTING-OFF OPERATIONS

Newly designed insert profile ensures unobstructed chip flow and consistent chip evacuation.

**BUY 20** inserts  
AND  
**GET 1** blade, holder  
or adaptor

**FREE**  
of charge!

**BUY 20** inserts  
AND  
**GET 1** **CHP** blade or holder

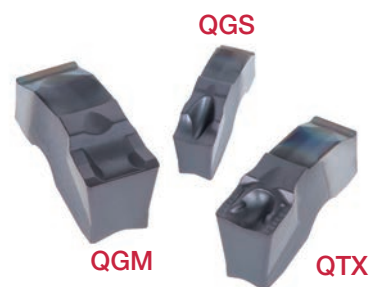
**50 %**  
additional  
discount!

**BUY 10** inserts + **1** block  
AND  
**GET 1** blade or holder

**FREE**  
of charge!

**BUY 10** inserts + **1** block  
AND  
**GET 1** **CHP** blade or holder

**50 %**  
additional  
discount!



### Inserts

**QGM, QGS and QTX** inserts  
(AH7025, AH6235)

**CW** = 0.079", 0.118", 0.157",  
0.197, 0.236" and 0.315"  
(2, 3, 4, 5, 6 and 8 mm)

Max. grooving depths

**CDX** = 1.29" (33 mm)  
(for monoblock shanks)

### NOTE:

Please inquire with your local  
Tungaloy representative  
regarding the tool holders  
offered in this promotion.

Video



For more  
information



## NEW DOUBLE-ENDED SMALL-SIZE INTERNAL GROOVING INSERTS WITH ROBUST DESIGN

Economical inserts for internal grooving,  $DMIN = 12 \text{ mm}$

**BUY 20** inserts

AND

**GET 1** head or holder

**FREE**  
of charge!

Grade: AH7025

Toolholder for internal grooving:  
CTIR\*\*S

Cutting heads for BoreMeister Series:  
S\*\*-CTIR...-H

DGS\*S type  
(2 corners)



DTR\*S type  
(2 corners)



## HIGH PRECISION GROOVING AND THREADING TOOL SERIES FOR CNC AUTOMATIC LATHES

Perfect for grooving and threading bar stocks of 0.472" (12 mm) or smaller diameters

**BUY 10 inserts**

AND

**GET 1 toolholder or 1 head**

**FREE**  
*of charge!*

**BUY 10 inserts**

AND

**GET 1 CHP toolholder**

**50 %**  
*additional discount!*

Insert:

VGP08/10 (for Grooving)

CW = 0.33 - 1 mm (0.012" - 0.039")

Insert:

VGT10F (for Threading)

Pitch = 0.4 - 2 mm

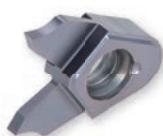
TPI = 12 - 64

Cutting edge angle = 55°, 60°

Toolholder:

All

VGP08/10



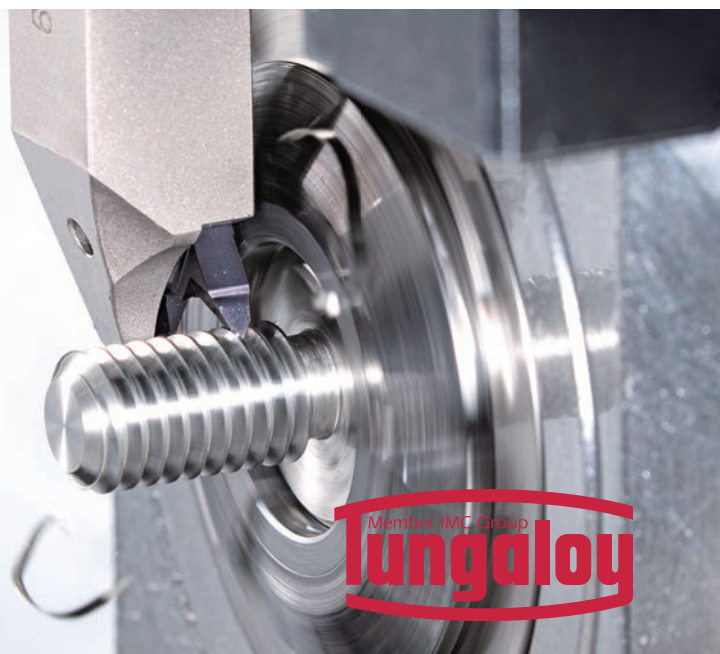
VGT10F



Video



For more information





## INNOVATIVE TURNING TOOL SERIES FOR CNC AUTOMATIC LATHES AND CAM-DRIVEN LATHES

Ideal for machining small parts of 0.472" (12 mm) or smaller diameters

**BUY 10** inserts

AND

**GET 1** toolholder

**FREE**  
*of charge!*

### Inserts:

JVPN\*\*R/L (for Grooving and Parting-off)

CW = 0.5, 0.6, 0.8, 1 mm (0.020", 0.024", 0.031" and 0.039")

JVFN45R/L (for Front Turning)

JVNR/L (Blank insert)

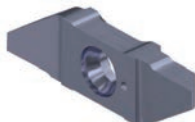
### Toolholder:

0606, 0707, 0808, and 1010 type

JVPN\*\*R/L



JVFN45R/L



JVNR/L



Video



For more  
information

## MULTI-FUNCTION SOLUTION FOR A WIDE RANGE OF OPERATIONS

Innovative four-edged inserts provide ultimate machining flexibility and economy. All-round cutter with center cutting capability provides ultimate machining versatility

**BUY 10 inserts per pocket**  
**AND GET 1 Cutter**

**FREE**  
*of charge!*

**Insert:**

**LXMU-MM (AH120, AH3225, AH8015 )**

**Shank type:**

**EVLX06/08/10/12/16/19...**

(Short type) DC =  $\varnothing 0.500''$  –  $\varnothing 1.500''$

(Short type) DC =  $\varnothing 12$  –  $\varnothing 40$  mm

**EVLX06/08/10/12/16/19...L**

(Long type) DC =  $\varnothing 0.500''$  –  $\varnothing 1.500''$

(Long type) DC =  $\varnothing 12$  –  $\varnothing 40$  mm

**Modular type:**

**HVLX06/08/10/12/16...**

DC =  $\varnothing 12$  –  $\varnothing 33$  mm



**LXMU-MM**

**Size 06:**

APMX 0.197", 5 mm

Tool dia.:  $\varnothing 0.500''$   
 $\varnothing 12$  -  $\varnothing 13$  mm

**Size 08:**

APMX 0.276", 7 mm

Tool dia.:  $\varnothing 0.625''$   
 $\varnothing 16$  -  $\varnothing 17$  mm

**Size 10:**

APMX 0.354", 9 mm

Tool dia.:  $\varnothing 0.787''$   
 $\varnothing 20$  -  $\varnothing 21$  mm

**Size 12:**

APMX 0.433", 11 mm

Tool dia.:  $\varnothing 1.000''$   
 $\varnothing 25$  -  $\varnothing 26$  mm

**Size 16:**

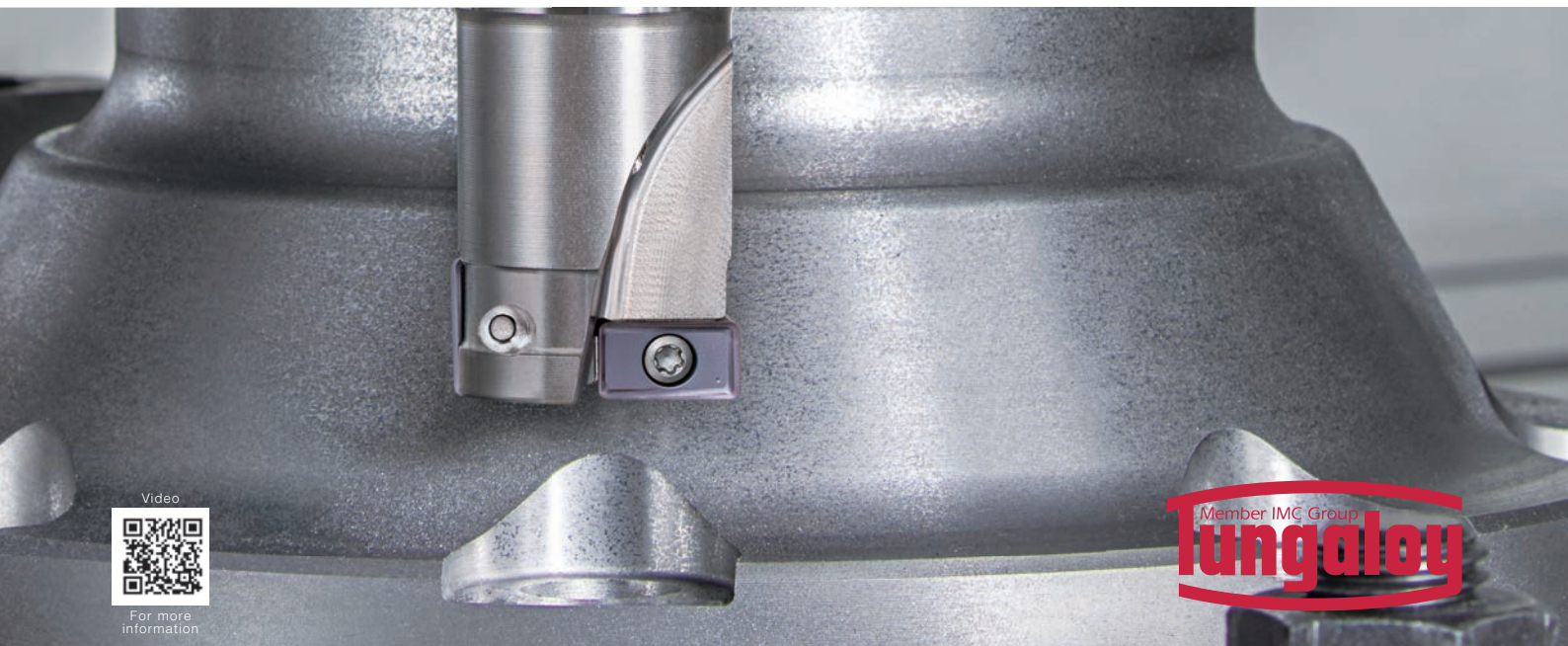
APMX 0.570", 14.5 mm

Tool dia.:  $\varnothing 1.250''$   
 $\varnothing 32$  -  $\varnothing 33$  mm

**Size 19:**

APMX 0.708", 18 mm

Tool dia.:  $\varnothing 1.500''$   
 $\varnothing 40$  mm



Video



For more information

Member IMC Group  
**tungaloy**



## HIGHLY-VERSATILE FACE MILLING CUTTERS FOR A WIDE VARIETY OF MATERIALS

DoTriple-Mill features an improved dovetail clamping structure and offers triple advantage of using square, octagonal, and round inserts in the same pocket

**BUY 10** inserts per  
**AND** pocket up to max 50 inserts  
**GET 1** Cutter

**FREE**  
of charge!

Limited up to diameter 5" (125 mm)

### Insert:

**SN\*U-MJ/MH/W** (AH120, AH3135, AH3225, T1215, T3225)  
APMX = 6 mm (0.236")

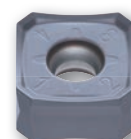
**ON\*U-MJ/W** (AH120, AH3135, AH3225, T1215, T3225)  
APMX = 3.4 mm (0.134")

**RNMU-MJ** (AH120, AH3135, AH3225, T1215, T3225)  
APMX = 6 mm (0.236")

### Bore type:

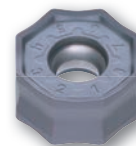
**TASN13**

DC = Ø2" - Ø5", Ø50 - Ø125 mm



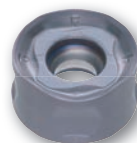
**SN\*U**

Double-sided,  
square insert



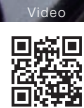
**ON\*U**

Double-sided,  
octagonal insert



**RNMU**

Double-sided,  
round insert



For more  
information

# ULTIMATE HIGH FEED MILLING CUTTER SERIES FOR MAXIMUM PRODUCTIVITY

High-feed cutters reduce machining time in a wide range of applications

**BUY 10 inserts per pocket**  
AND  
**GET 1 Cutter**  
up to max 50 inserts

**FREE**  
of charge!



**LN\*U0303ZER...**  
For low cutting forces



**LN\*U0303UER...**  
For long tool life and reduced vibration

Limited to inserts 03 type

**Insert:**

LN\*U03-MH/MJ/ML/MS

(AH130, AH3225, AH725, AH120, AH8015, AH8005)

APMX = 0.035" - 0.039"

**Shank type:**

EXN03R... (Short type)

EXN03R...L/EXN03R...L-C (Long type)

DCX =  $\varnothing 0.625$ " -  $\varnothing 1.500$ ",  $\varnothing 16$  -  $\varnothing 40$  mm

**Bore type:**

TXN03R...

DCX =  $\varnothing 1.50$ " -  $\varnothing 2.00$ ",  $\varnothing 40$  -  $\varnothing 50$  mm

**Modular type:**

HXN03R...

DCX =  $\varnothing 16$  -  $\varnothing 40$  mm



Video



For more  
information



# PROFILING CUTTER FOR 3-DIMENSIONAL MACHINING DUE TO HELICAL CUTTING EDGES

Unique twisted insert geometries assures secure insert clamping for high stability.  
Two types of inserts fit one cutter: radius and high efficiency inserts.

**BUY 10 inserts per pocket**  
AND  
**GET 1 Cutter**  
up to max 50 inserts

**FREE**  
of charge!

## Insert:

LNMX04/05/06-MJ/ML (Radius type)  
(AH3135, AH120, AH8015, AH3225)  
APMX = 0.157" - 0.236"

LNMX04/06-HJ/HL (High-feed type)  
(AH3135, AH120, AH8015, AH3225)  
APMX = 0.051" - 0.079"

## Shank type:

EXLN04/05/06R... (Short type)  
EXLN04/05/06R\*\*L... (Long type)  
DCX =  $\varnothing 0.787''$  -  $\varnothing 2.000''$ ,  $\varnothing 20$  -  $\varnothing 40$  mm

## Modular type:

HXLN04/05/06R...  
DCX =  $\varnothing 20$  -  $\varnothing 42$  mm

## Bore type:

TXLN04/05/06R...  
DCX =  $\varnothing 1.50''$  -  $\varnothing 3.00''$ ,  $\varnothing 40$  -  $\varnothing 66$  mm



LNMX...MJ / ML  
Radius insert



LNMX...HJ / HL  
High-feed insert



Video



For more information



Tungaloy-NTK America Inc.  
3726 N. Ventura Drive, Arlington Heights, Illinois, 60004, U.S.A.  
TEL: +1-888-554-8394  
FAX: +1-888-554-8392  
info@tungaloy-ntk.com  
[tungaloy.com/us](http://tungaloy.com/us)

# Leading in Innovation

Distributed by:



**TOOLING & ACCESSORIES**  
[www.productivity.com](http://www.productivity.com)

<b>MINNESOTA</b> (763) 476-4196	<b>NEBRASKA</b> (402) 330-2323	<b>IOWA</b> (319) 734-3409
<b>DENVER</b> (303) 757-2093	<b>SALT LAKE CITY</b> (801) 521-1716	



 **FIND US ON THE CLOUD!**  
[machiningcloud.com](http://machiningcloud.com)

Jan. 2024 (TJ)