

2022

# TOOLING PROMO

Featuring

**SPEEDUP**  
HIGH SPEED & FEED



Productivity Inc.

## TOOLING & ACCESSORIES

[www.productivity.com](http://www.productivity.com)

### MINNESOTA

15150 25th Ave. N.  
Plymouth, MN 55447  
(763) 476-4196

### NEBRASKA

8402 South 117th St.  
Omaha, NE 68128  
(402) 330-2323

### IOWA

9440 Atlantic Drive SW  
Cedar Rapids, IA 52404  
(319) 734-3409



Productivity Inc.

## TOOLING & ACCESSORIES

[mmtproductivity.com](http://mmtproductivity.com)

### SALT LAKE CITY

4205 W. 1980 South  
Salt Lake City, UT 84104  
(801) 521-1716

### DENVER

4925 South Santa Fe Drive  
Littleton, CO 80120  
(303) 757-2093

**3RD/4TH QTR**



Member IMC Group

**Ingersoll**  
Cutting Tools



Higher  
Feed  
Rates

**CUTSFEED<sup>®</sup>** Featuring: **COOLBURST<sup>™</sup>**

**Single-ended rigid inserts & holders for parting and deep grooving with unique adapters!**

- Rigid, 3-point insert clamping contact for excellent accuracy, repeatability and durability
- Increase productivity with higher feed rates!
- System capable of parting off up to 4.72" (120 mm) work piece diameter
- Rigid triangular blades and dedicated holders...very stable performance
- 1.6mm, 2mm & 3mm insert widths
- Now available with CoolBurst internal coolant supply for longer tool life and improved chip evacuation!

**DEAL A** (PC 250A)

**PURCHASE** one CUTSFEED block & 10 inserts

**& RECEIVE** one CUTSFEED triangle blade **FREE!**

**DEAL B** (PC 250B)

**PURCHASE** one CUTSFEED block & 30 inserts

**& RECEIVE** one CUTSFEED triangle blade with COOLBURST **FREE!**

**DEAL C** (PC 250C)

**PURCHASE** 20 inserts **& RECEIVE** one traditional

blade\* or square shank holder **FREE!**

**DEAL D** (PC 250D)

**PURCHASE** 40 inserts **& RECEIVE** one traditional COOLBURST blade\* or COOLBURST square shank

holder **FREE!**

\*Traditional blocks sold separately



Holder

Blade

Triangle style blade

Block

**SPEED UP**  
HIGH SPEED & FEED





**SPEED UP**  
HIGH SPEED & FEED



# **SUPERTURN<sup>2</sup>**

Featuring:

**COOLBURST<sup>TM</sup>** 

**4-edge inserts and holders for all-directional turning including high-feed backward turning**

- Multi-directional turning capabilities; forward turning, hi-feed backward turning, face turning, profiling and undercutting all with the same tool
- Double-sided ZNMV inserts provide 4 cutting edges
- Much higher productivity due to reduced downtime, fewer tool changes and optimized tool paths
- Multiple chip breakers suitable for steels, stainless steel & hi-temp alloys
- 1.00" and 1.25" holders feature rigid T-Type clamping and optional CoolBurst internal coolant supply



**DEAL A** (PC 251A)

**PURCHASE** 20 inserts & **RECEIVE** one external holder **FREE!**

**DEAL B** (PC 251B)

**PURCHASE** 30 inserts & **RECEIVE** one external COOLBURST holder **FREE!**





# RHINO TURN™

Featuring:

## COOLBURST™



### Economical turning inserts now with thru-coolant holders

- Pinpoint coolant delivery from top clamp (for chip breaking) and bottom of holder (for cooling)
- Industry-leading 1,000+ "economy" inserts to choose from!
- T-type holding system with multi-directional clamping force provides 40% more stability over conventional lever lock holders, plus simple & fast indexing. No additional components required.
- Up to 50% increase in tool life under the same machining conditions
- 20% increase in cutting speed capability in difficult-to-cut materials
- Excellent chip control

**DEAL A** (PC 252A)

**PURCHASE** 30 inserts & **RECEIVE**

one corresponding external CoolBurst holder at a...

**50% DISCOUNT!**

**DEAL B** (PC 252B)

**PURCHASE** 40 inserts & **RECEIVE**

one corresponding external CoolBurst holder...

**FREE OF CHARGE!**



Member IMC Group  
**Ingersoll**  
Cutting Tools





# RHINO TURN<sup>TM</sup>

# COSTS

**A NEW double-sided mini-size insert and holder line,  
an economical alternative to standard positive  
turning and boring inserts**

- Double-sided miniature inserts (7mm IC)
- Optimized turning for low depths of cut (up to 2mm)
- Inserts feature the same cutting edge angle as standard positive inserts (zero degrees)
- Low cutting forces promote very good surface finish
- Excellent chip control at lower depths of cut
- Stable screw clamping
- Suitable for general purpose machining of small parts, especially on Swiss type automatic lathes

**DEAL A** (PC 253A)

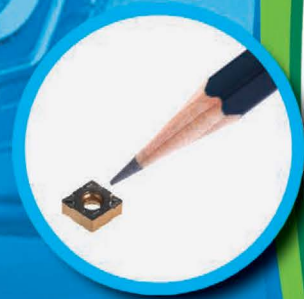
**PURCHASE** 30 inserts & **RECEIVE**  
one corresponding external holder...

**FREE OF CHARGE!**

**DEAL B** (PC 253B)

**PURCHASE** 40 inserts & **RECEIVE**  
one corresponding boring bar...

**FREE OF CHARGE!**



INDUSTRY 4.0  
**Ingersoll**  
Member IMC Group  
Cutting Tools



**DOUBLE  
SIDED!**





# GOLDFLEX™ 20

## 4-edge inserts & holders for external grooving on Swiss-type automatic lathes

- 4-edge miniature insert for grooving, parting, turning, profiling and threading on Swiss-type lathes
- Inserts are handed so they can part or groove next to a square shoulder
- Grooving widths from .020~.118" (0.5 to 3.0 mm)
- Grooving depth up to .197" (5.0 mm)
- Holders available with or without CoolBurst high pressure internal coolant supply



# QUADFLEX™

## 4-edge inserts for internal grooving

- The only 4-cutting edge internal grooving insert in the market!
- 3-point contact design with strong screw clamping for stable machining
- Positive chip breaker controls chips and generates a very good surface finish
- Minimum bore diameters as small as .650" (16.5 mm)
- Unique insert design can be mounted to both left and right-hand holders
- Internal coolant supply



### DEAL A (PC 254A)

**PURCHASE** 10 GOLDFLEX inserts & **RECEIVE** one GOLDFLEX holder **FREE!**

### DEAL B (PC 254B)

**PURCHASE** 20 inserts & **RECEIVE** one GOLDFLEX CoolBurst or QUADFLEX holder **FREE!**



**SPEED UP**  
HIGH SPEED & FEED





# GOLD TWIST

**Premium hole machining with expanded range of TPC self-centering tips**

- Unique geometry eliminates need for a pilot hole
- Excellent surface finish, hole cylindricity and straightness
- Fully compatible with existing GoldTwist drill bodies
- Diameter range: .236" - 1.020" (D6.0-25.9mm)
- For steel and cast iron applications

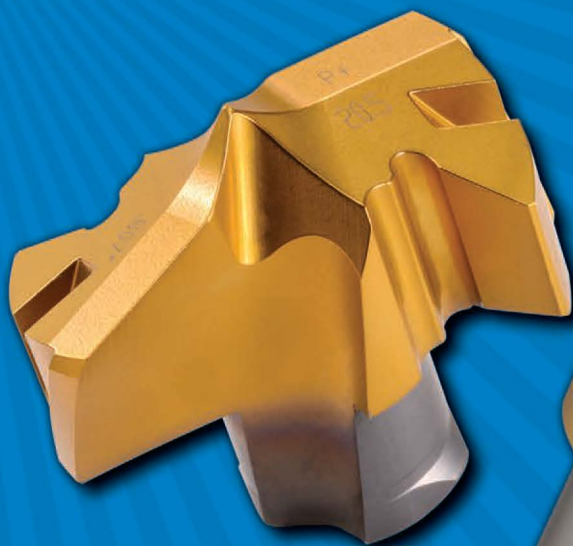
## **DEAL A** (PC 255)

**PURCHASE** 6 TPC tips & **RECEIVE** one corresponding drill body up to 8xD at a...

**50% DISCOUNT!**



Member IMC Group  
**Ingersoll**  
Cutting Tools







# TWIST SPEED<sup>TM</sup>

## 3-flute quick change drills for increased productivity!

- 3-flute geometry increases productivity by 50%
- Diameter range: .5906"-.8228" (D15.0-D20.9mm)
- 3xD and 5xD bodies available with cylindrical and universal shanks
- Self-centering geometry
  - Eliminates the need for piloting pre hole
  - Excellent hole precision and finish
  - Reduced spindle loads
- Multiple diameters accommodated with a single body
- Coolant through for excellent chip evacuation
- New IN2205 grade for excellent tool life in steel and cast iron applications
- Simplified tip replacement reduces downtime

**DEAL A** (PC 256)

**PURCHASE** 4 tips & **RECEIVE** one  
corresponding drill body up to 5xD...

**FREE OF CHARGE!**



**SPEED UP**  
HIGH SPEED & FEED







Member IMC Group  
**Ingersoll**  
Cutting Tools



**Higher  
Feed  
Rates**

## **SOLID DRILL<sup>3</sup>**

**NEW 3-flute solid carbide drill for 50% higher feed rates!**

- 3-flute geometry increases productivity by at least 50%
- Self-centering geometry provides precise and accurate holes
- Very high stability in the cut due to its specially designed edge geometry
- 3 coolant outlet holes to maximum flow & evacuate chips
- 3xD and 5xD lengths
- Full range of inch and metric diameters from 5/32" - 15/32" (4mm - 12mm)
- Suitable for steel and cast iron drilling

**DEAL A** (PC 257)

**PURCHASE** 4 drills  
& **RECEIVE** the 5th drill...

**FREE OF CHARGE!**







# NUMAX<sup>HF</sup><sup>TM</sup>

## Hi-feed face mill family with steep ramp angles & reliable dovetailed insert seating

- Unique diamond shaped inserts provide the highest ramping feed rates at the steepest ramping angles
- Thick tangential inserts give maximum reinforcement to the cutting edge and cutter longevity
- Large insert seating areas are dovetailed to stabilize and support the insert under the most aggressive conditions
- Inserts offered in both pressed and ground profiles for economical performance across all material types

### **DEAL A** (PC 258)

**PURCHASE** 10 inserts / per pocket  
& **RECEIVE** one corresponding face mill body...

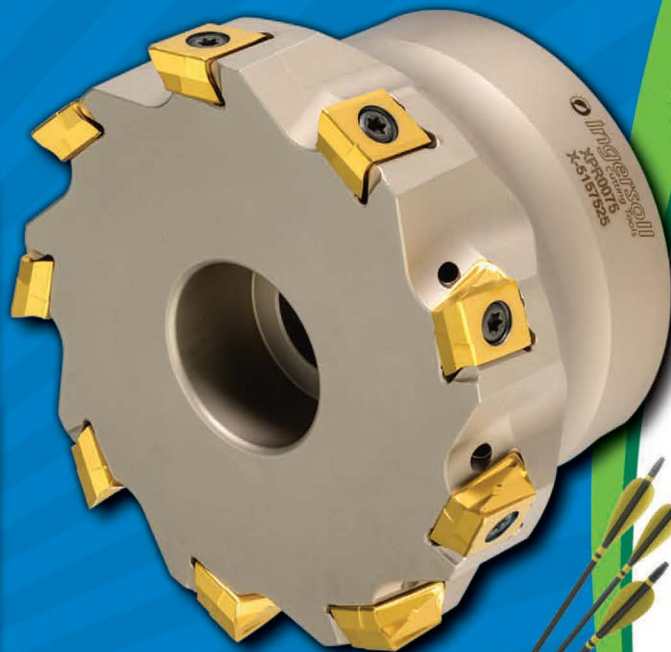
**FREE OF CHARGE!**



**SPEED UP**  
HIGH SPEED & FEED







**SPEED UP**  
HIGH SPEED & FEED

**MAXSFEED™**

**3 comprehensive series of tangential ramping end mills and face mills feature versatility, productivity, & economy!**

- Insert sizes of 5, 11 and 13mm
- Starting in diameters as small as .500"!
- Dovetailed insert mounting for increased edge life & improved cutter reliability
- High performance, ground-profile inserts are shaped to minimize lap lines when shouldering, available in both heavy and light geometries
- MaxSFeed is capable of ramping and spiral interpolation!

**DEAL A** (PC 259)

**PURCHASE** 10 inserts / per pocket  
& **RECEIVE** one corresponding tool body\*.

**FREE OF CHARGE!** \*max 5" dia





**SPEED UP**  
HIGH SPEED & FEED



## HIPOSSPEED V™

**Mini sized 90° shoulder and hi-feed mills  
with strong V-shaped insert bottom**



- .250 – .500" diameter cutter range
- V-bottom pocket fosters easy insert indexing, increased core diameter and minimizes insert screw stress
- 90° and hi-feed inserts fit the same pockets
- Integrated wiper flats produce 32-63 Ra surface finishes
- All cutters are plumbed with coolant through the tool
- High cutter densities with small IC insert sizes
- Economical solid carbide alternative!

**DEAL A** (PC 260)

**PURCHASE** 10 inserts / per pocket  
& **RECEIVE** one corresponding tool body...

**FREE OF CHARGE!**





# DIPOSFEEED™ 04,11



## Double-sided hi-feed inserts for exceptional productivity!

- 4 cutting edges for cost-effective machining and economy!
- Feed rates up to .160"/tooth!
- Depth of cut capability up to .078"
- Cutter diameter range (04mm insert): .312" ~ 1.25"
- Cutter diameter range (11mm insert): 1.25" ~ 4.00"
- Cutter body options: End Mill, Top-On, Chip Surfer and Face Mill
- Higher insert densities for super productivity!
- Optimal insert cutting edge preparations and rake face geometries for all material groups

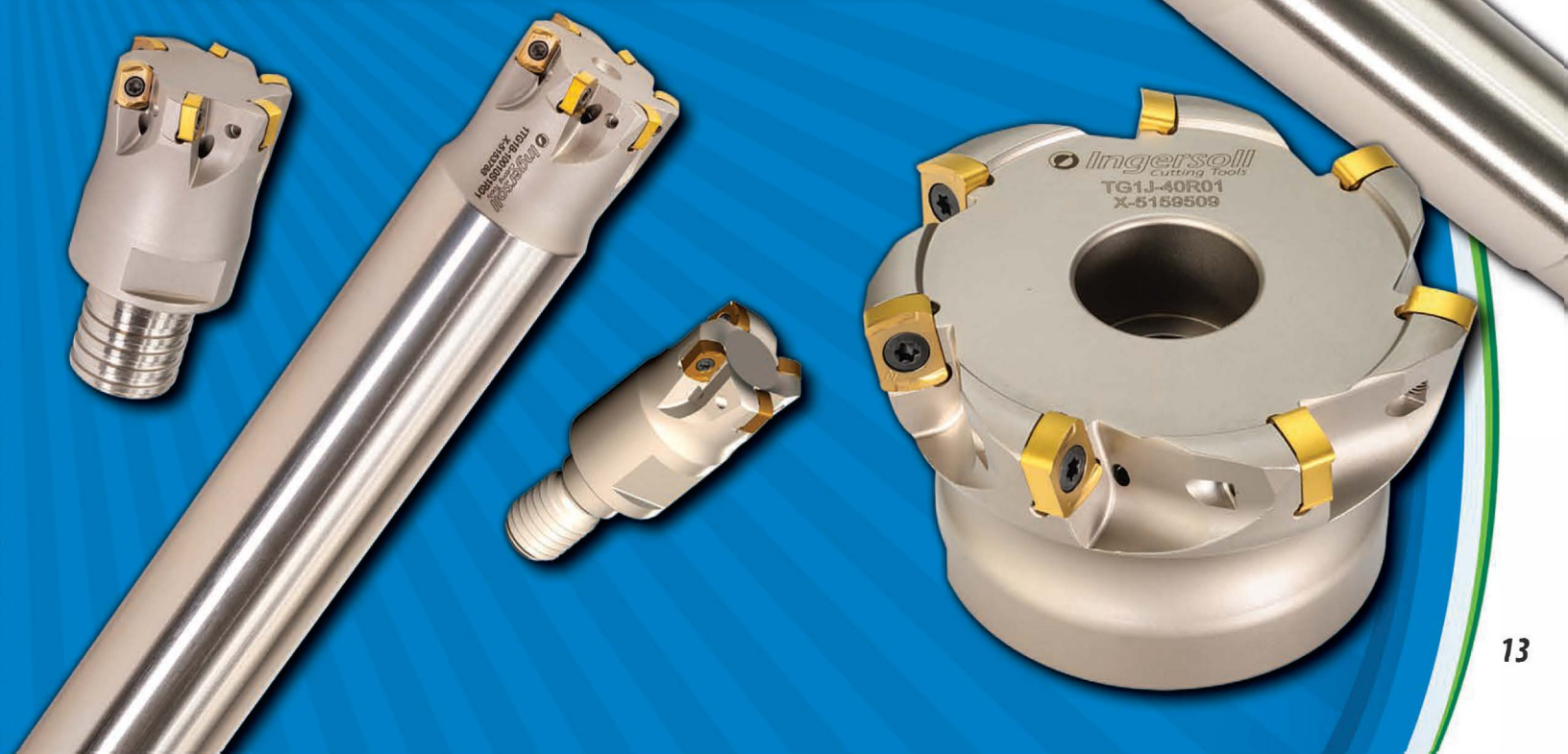
### DEAL A (PC 261)

**PURCHASE** 10 inserts / per pocket  
& **RECEIVE** one corresponding tool body...

**FREE OF CHARGE!**



**SPEED UP**  
HIGH SPEED & FEED





**NEW  
SIZES!**

# **GOLD SFEED™ 4,16**

**NEW GoldSFeed expansion featuring  
4 & 16mm insert sizes**

- 2 additional IC sizes of 4mm and 16mm with DOCs of .023" and .107" respectively
- Expanding the GoldSFeed line to include cutter diameters as small as .375"
- GoldSFeed is now one of the most complete and extensive hi-feed milling line in metalworking

**DEAL A** (PC 262)

**PURCHASE** 10 inserts / per pocket  
& **RECEIVE** one corresponding tool body\*...

**FREE OF CHARGE!** \*max 5" dia



**SFEED UP**  
HIGH SPEED & FEED







**SPEED UP**  
HIGH SPEED & FEED



# **GOLD SFEED™ 9, 13 & 19**

**The original GoldSFeed hi-feed milling line that started it all. 9, 13 & 19mm insert sizes**

- 3 distinct insert geometries provide an optimal solution across all material classes and application types
- Ingeniously designed insert mounting for reliable fast feed rates
- All inserts include radial wipers for smooth profiling, shouldering and hole interpolation which can eliminate secondary operations



**DEAL A** (PC 263A)  
**PURCHASE** 20 inserts & **RECEIVE** one corresponding end mill\* at **50% OFF!**

**DEAL B** (PC 263B)  
**PURCHASE** 40 inserts & **RECEIVE** one corresponding face mill\* at **50% OFF!**

\*max 5" dia





## DIPOSQUAD™

***True 90° shoulder mills with 8-edge economy!***

- .625" - 6.00" cutter diameter range
- 7mm insert generates true 90° up to .19" depth of cut & is optimized to step down axially with minimal mismatch
- 12 mm insert generates true 90° up to .33" depth of cut
- High axial rake reduces cutting loads and promotes smooth machining
- Unequally spaced insert placement aids to diffuse vibration
- Integrated wiper flats produce 32-63 Ra surface finishes



**DEAL A** (PC 264)

**PURCHASE** 10 inserts / per pocket  
& **RECEIVE** one corresponding tool body...

**FREE OF CHARGE!**



**SPEED UP**  
HIGH SPEED & FEED





# DIPOSPENTA™

## Hi-feed and 65° end and face mills with 10-edge economy!

- .750" - 4.00" cutter diameter range
- 5mm & 10mm insert IC's offer diverse DOC options
- Same insert fits Hi-Feed & 65° mills
- Reinforced cutting edge boasts high feed rate potential
- Positive geometry promotes smooth machining
- Wide market range including Die/Mold and General Purpose!

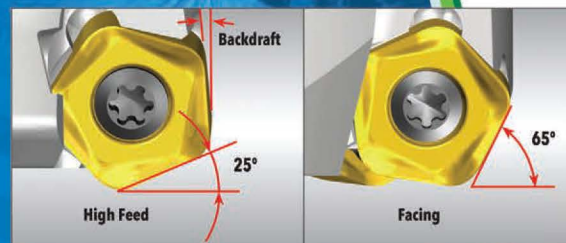
### DEAL A (PC 265)

**PURCHASE** 10 inserts / per pocket  
& **RECEIVE** one corresponding tool body...

**FREE OF CHARGE!**



Member IMC Group  
**Ingersoll**  
Cutting Tools

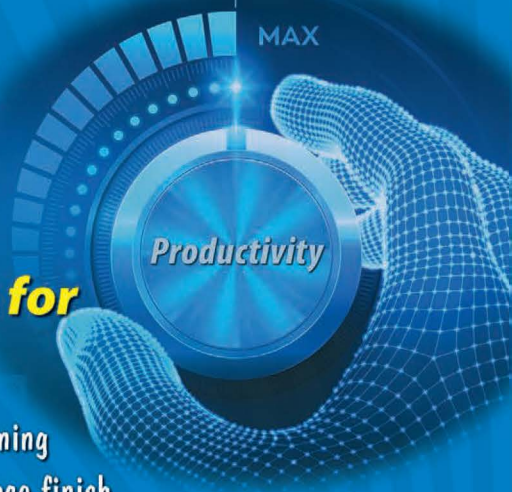




# TEDI FEED

**High number of PCD cutting edges for high productivity!**

- High rigidity double clamping system to support hi-feed machining
- Up to .016" total axial adjustment to ensure an excellent surface finish
- Multiple cutting edge geometries to cover any application, including 90° and 75° lead angles
- 1.5" (40mm) available in cylindrical shank
- 2.0-5.0" (50mm-125mm) range in shell mill or monoblock bodies
- DOC capability of .157" (4mm)
- Ability to re-tip cartridges



**DEAL A** (PC 266)

**PURCHASE** 2 fills of inserts

**& RECEIVE** one corresponding tool body

at **75% OFF!** plus shell mill adapter...

**FREE OF CHARGE!**



**SPEED UP**  
HIGH SPEED & FEED



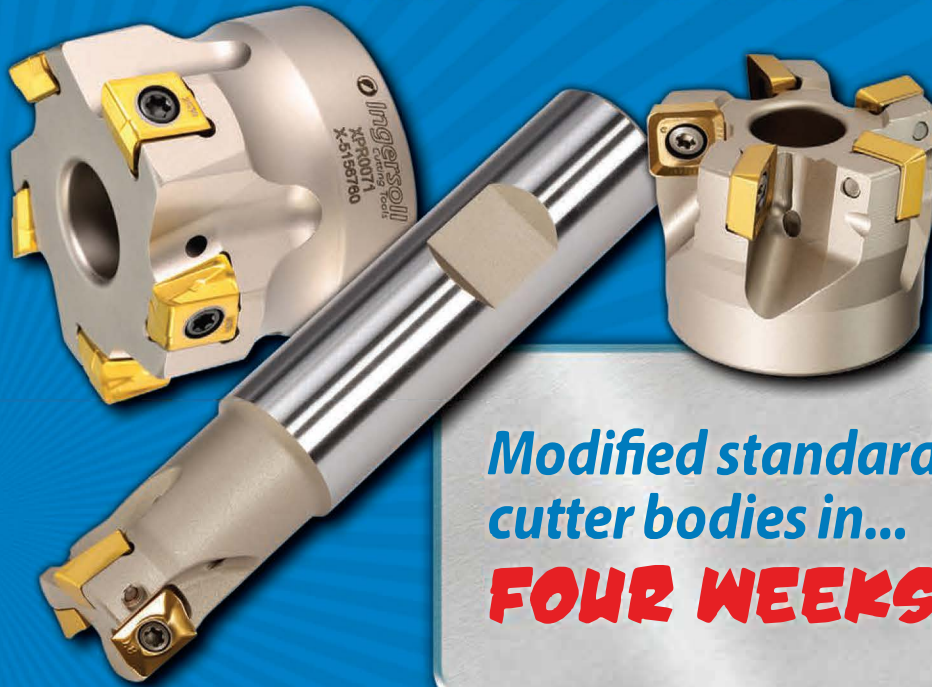


# QWIKMOD™

## EXPRESS DELIVERY PROGRAM

Quote and approval drawing in...

**...48 HOURS OR LESS!**



Modified standard  
cutter bodies in...  
**FOUR WEEKS!**



ChipSurfer modified  
standard tips in...  
**THREE WEEKS!**



Scan the QR code or contact your  
Ingersoll distributor or direct sales  
representative for more details  
and qualifying products

**SPEED UP**  
HIGH SPEED & FEED





Member IMC Group

# Ingersoll

## Cutting Tools

### Marketing & Technology Center

845 S. Lyford Road

Rockford, IL 61108-2749 U.S.A.

Tel: 815.387.6600

Fax: 815.387.6968

Email: [info@ingersoll-imc.com](mailto:info@ingersoll-imc.com)

Internet: [www.ingersoll-imc.com](http://www.ingersoll-imc.com)



PRO-116-5  
2930917  
Printed in U.S.A.

Ingersoll Cutting Tools reserves the right to limit quantities, to change the terms of the promotion without notice, and to refuse an order that does not conform with the terms and conditions contained or implied herein. Offer good until December 31st, 2022, unless otherwise noted, or while supplies last. Prices exclude applicable taxes. All promotions based on the price list in effect at the time the order is placed. Distributor orders must be drop shipped to the end user. Limit of 5 of the same product to the same end user.