

**NEW!**  
**INTERACTIVE PDF**  
Click on the underlined text

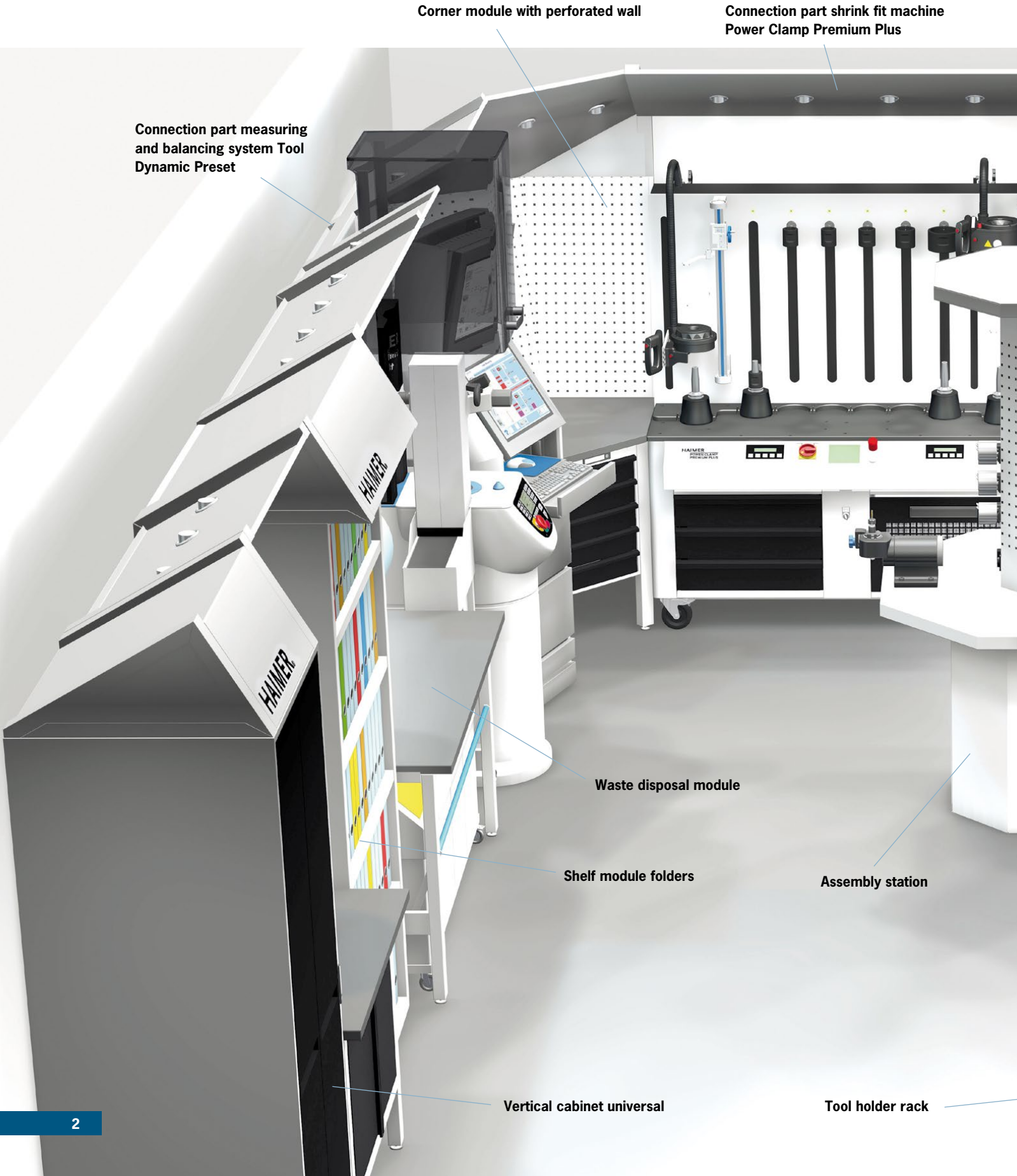
**HAIMER®**  
Quality Wins.

# TOOL MANAGEMENT



[www.haimer-usa.com](http://www.haimer-usa.com)

HAIMER TOOL MANAGEMENT LOGISTICS SYSTEM – OVERVIEW



Workbench assembly module

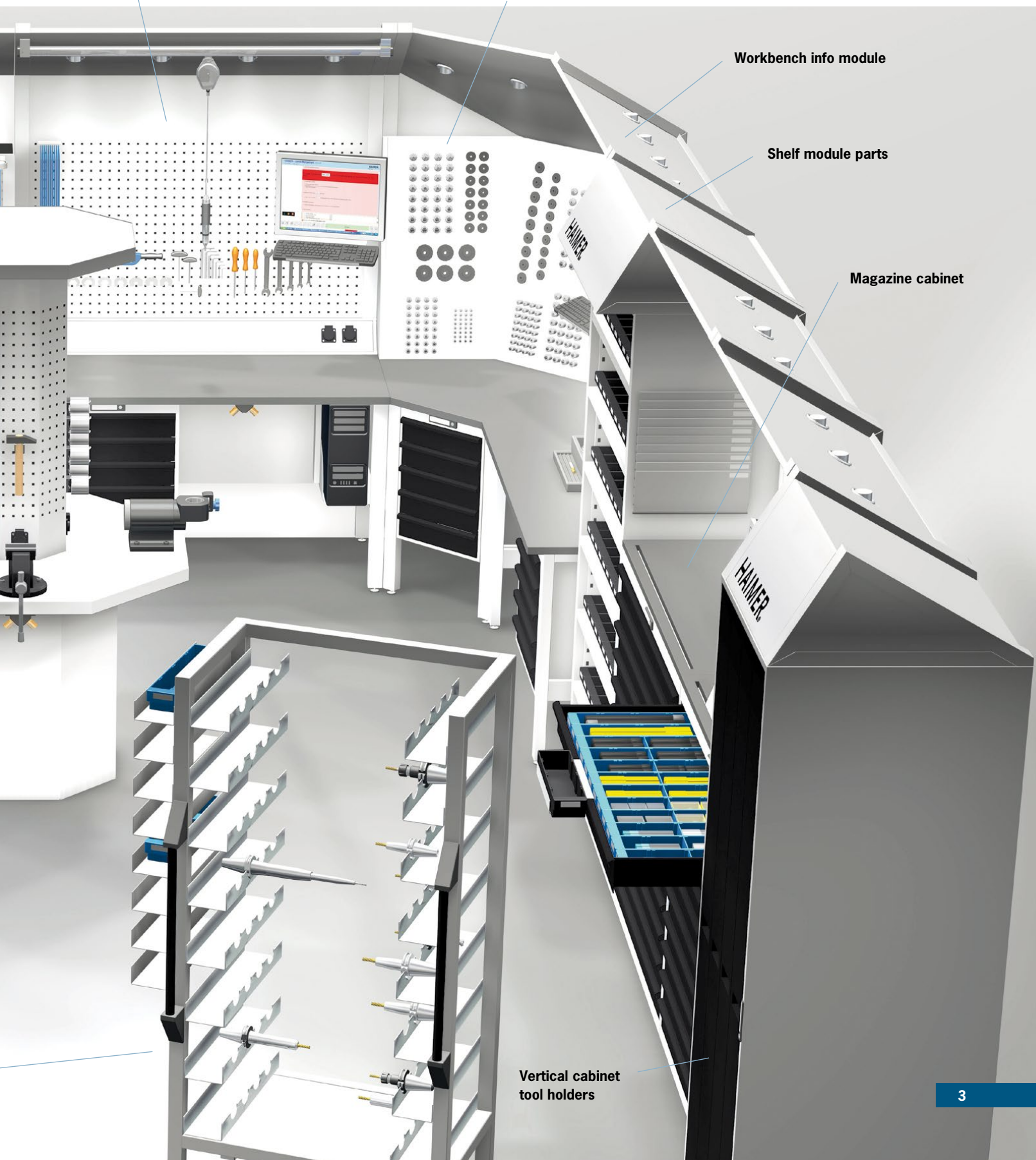
Corner module with rear wall for storing collets and tools

Workbench info module

Shelf module parts

Magazine cabinet

Vertical cabinet tool holders



## TOOL MANAGEMENT – FOR EFFICIENT WORKING

**Use:**

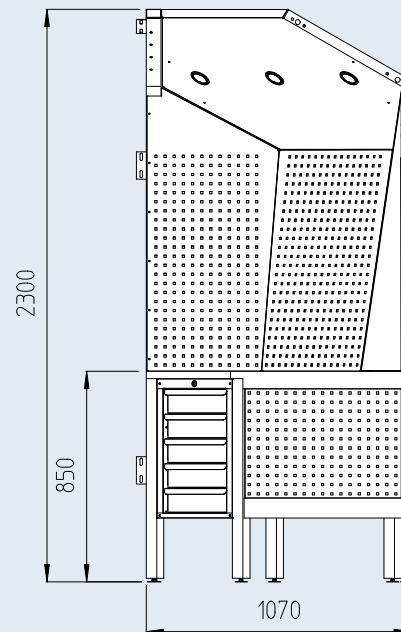
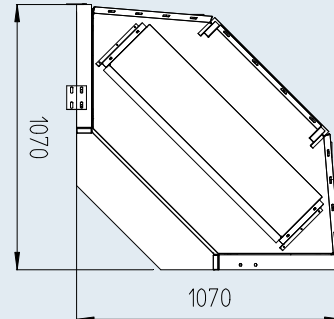
The HAIMER Tool Management completes the HAIMER product program as a system partner around tool clamping. That means HAIMER offers the complete Tool Management equipment from a single source. As a complete solution for tool pre-setting and tool management, the HAIMER Tool Management provides you with functional and ergonomic criteria for the design of work stations.

The storage, setup and management of tools is simplified and optimized by the HAIMER solutions so that efficient working is guaranteed.

- Modular room design according to the customer's requirements
- Shrinking, balancing and presetting already integrated into the concept
- Tidy and isolated solution for concentrated working

CORNER MODULE

Corner module with perforated wall



**Use:**

The perforated back wall and drawer unit provide a clean and structured workspace. The three integrated LED spots ensure a continually bright and comfortable working atmosphere.

Delivery includes:

- Corner module with a perforated wall, roof with LED lighting, drawer unit

**Description**

Corner module 4.0

**Order No.**

[84.802.00.3](#)

WORKBENCH ASSEMBLY MODULE



Picture shows: Assembly module with special configuration, Order No. [84.801.03.3](#)

**Use:**

- Freely configurable workbench
- Individual delivery by using a predefined modular system

**Delivery includes:**

- Standard equipment includes perforated back wall, 4 LED spots and 4 x 230V power outlets

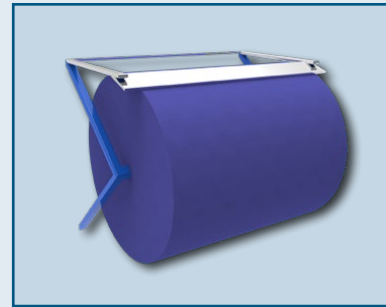
**Description**

Workbench assembly module

**Order No.**

[84.801.00.3](#)

## WORKBENCH ASSEMBLY MODULE – CONFIGURATIONS



Paper dispenser



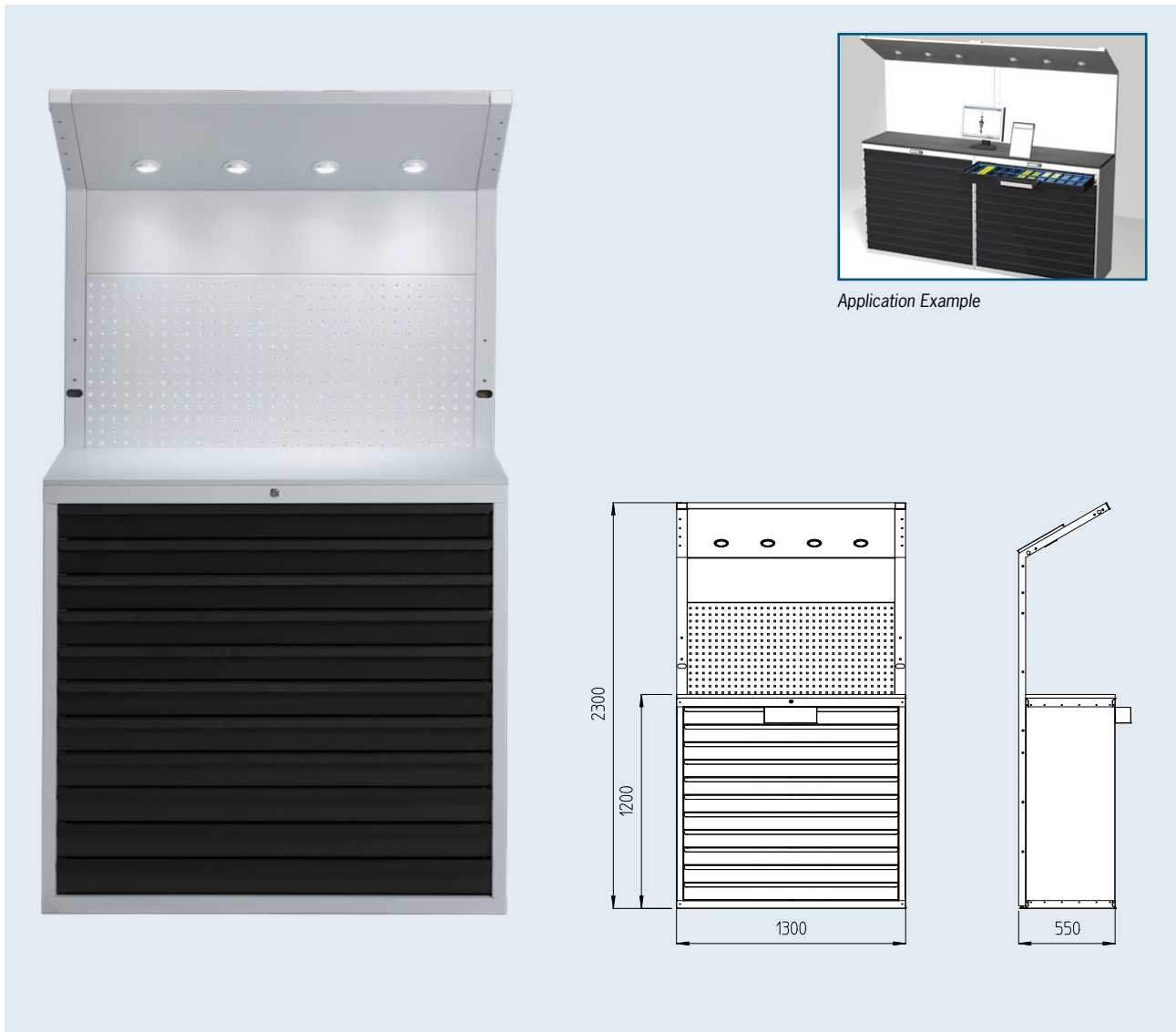
Waste disposal module



Drawer cupboard

Configurations	Order No.
Workbench assembly module with perforated wall	<a href="#">84.801.00.3</a>
Workbench assembly module with drawer cupboard	<a href="#">84.801.01.3</a>
Workbench assembly module with PC holder and screen holder	<a href="#">84.801.02.3</a>
Workbench assembly module with PC holder, screen holder and drawer cupboard	<a href="#">84.801.03.3</a>
Workbench assembly module with paper dispenser	<a href="#">84.801.04.3</a>
Workbench assembly module with drawer cupboard and paper dispenser	<a href="#">84.801.05.3</a>
Workbench assembly module with drawer cupboard, paper dispenser, PC holder and screen holder	<a href="#">84.801.06.3</a>
Workbench assembly module with waste disposal module	<a href="#">84.801.07.3</a>
Workbench assembly module with waste disposal module and paper dispenser	<a href="#">84.801.08.3</a>
Workbench module – dropped for Power Clamp Premium	<a href="#">84.807.00.3</a>

MAGAZINE CABINET



Application Example

**Use:**

Magazine cabinet for proper storage of tools (inserts, shank tools etc.) and small parts. The perforated wall helps for a clear arrangement of (mounting) tools. Ergonomical working height at 1.20 m.

Delivery includes:

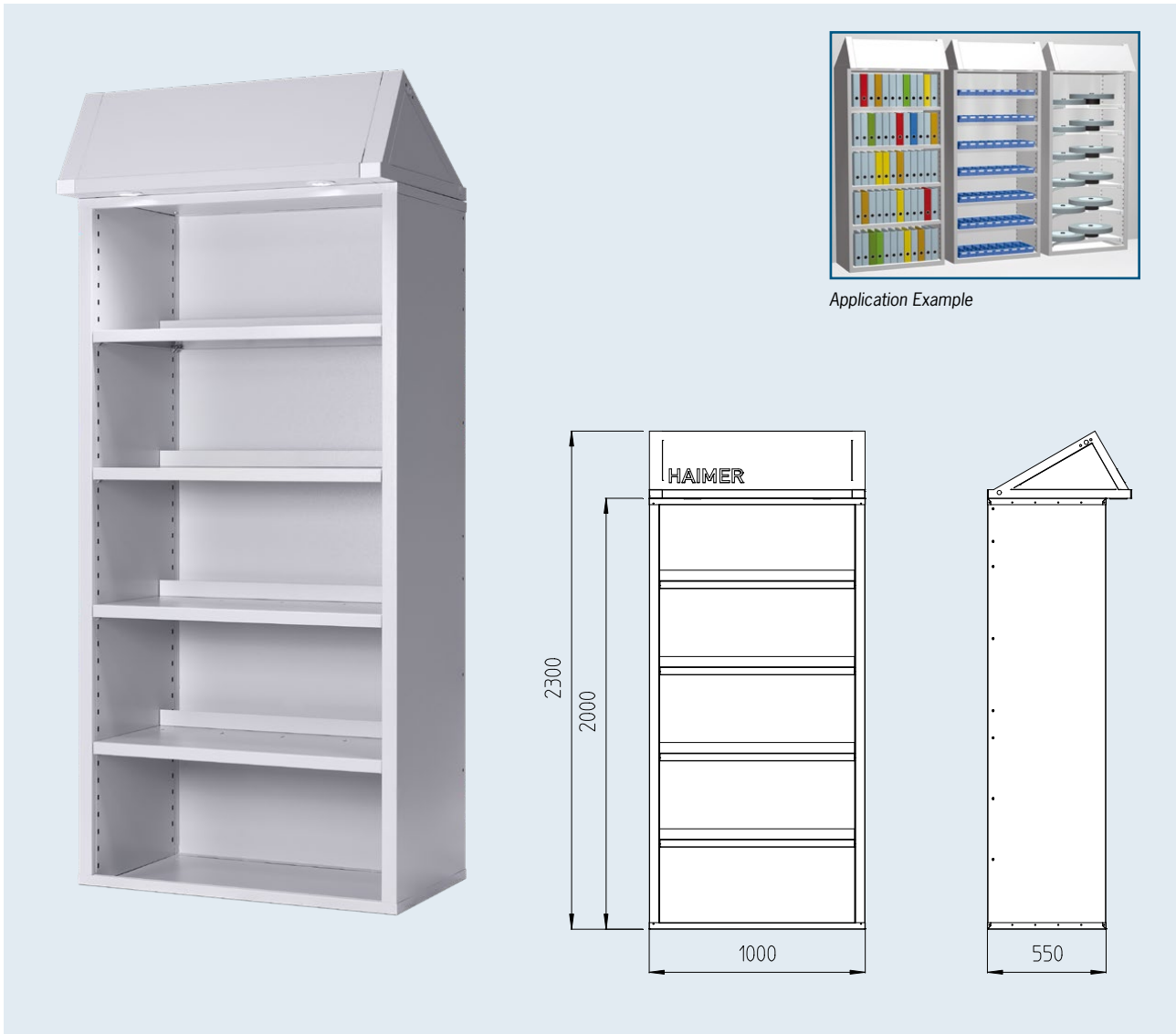
- Magazine cabinet with a standing work area, perforated wall and 4 LED Spots
- 11 drawers

Description	Order No.
Magazine cabinet	<a href="#">84.804.00.3</a>

Accessories	Order No.
12 pcs. Drawer equipment (plastic blue) sufficient for 1 drawer at the magazine cabinet	<a href="#">84.810.14</a>
24 pcs. Divider for drawer equipment (synthetic material)	<a href="#">84.810.15</a>



## SHELF MODULE



Application Example

**Use:**

Shelf module with hood for proper storage of accessories.

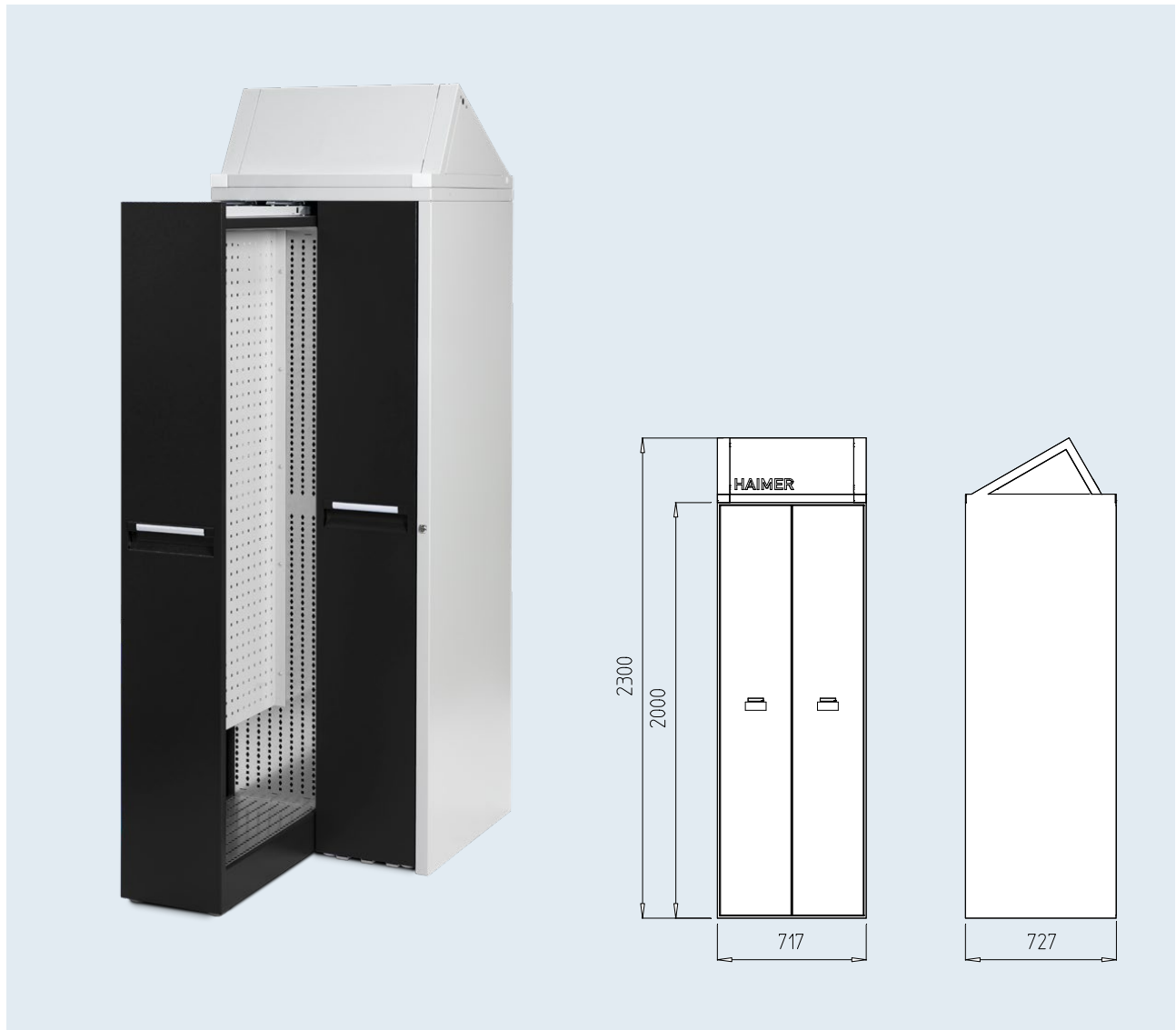
Delivery includes:

- Equipped as standard with 4 shelf cabinets and 2 LED Spots
- Optional: additional shelf cabinet, shelf cabinet for grinding wheels

Description	Order No.
Shelf module with hood	<a href="#">84.805.01.3</a>

Accessories	Order No.
Shelf for shelf cabinet with stop bar	<a href="#">84.805.00.01.3</a>
Shelf for grinding wheels for shelf cabinet to hold 2 grinding wheels	<a href="#">84.805.00.03.3</a>

## VERTICAL CABINET UNIVERSAL



**Use:**

Pullout cabinets with perforated walls can be equipped on both sides and provide a clean storage area for tools or auxiliary tools. The accessibility from both sides facilitates the removal and localization of the needed tool.

Delivery includes:

- Vertical cabinet Universal with 2 perforated panel extracts (can be equipped on both sides)

**Description**

**Vertical cabinet Universal**

**Order No.**

**84.805.06.3**

## VERTICAL CABINET TOOL HOLDER



**Use:**

Safe and space-saving storage of tool holders of all interfaces, if necessary with clamped cutting tools. Good accessibility from both sides of the pullouts.

Delivery includes:

- Vertical cabinet for tool holders with 4 pullout cabinets
- Additionally available shelf units provide a clean, save and space-saving storage for your tool holders

Description	Order No.
Vertical cabinet tool holder	<a href="#">84.805.07.3</a>

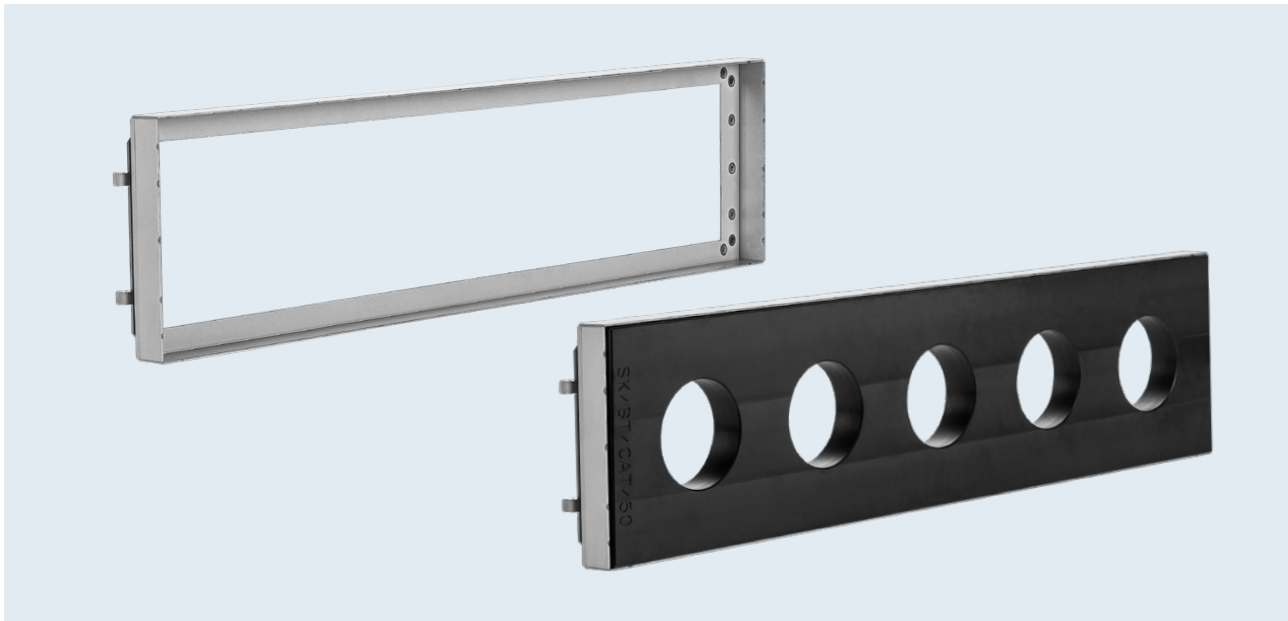
Accessories	Order No.
Shelves for vertical cabinet	See page 13

VERTICAL CABINET TOOL HOLDER – APPLICATION EXAMPLE

This is how you store your tool holders and accessories correctly.



## VERTICAL CABINET TOOL HOLDER – SHELVES

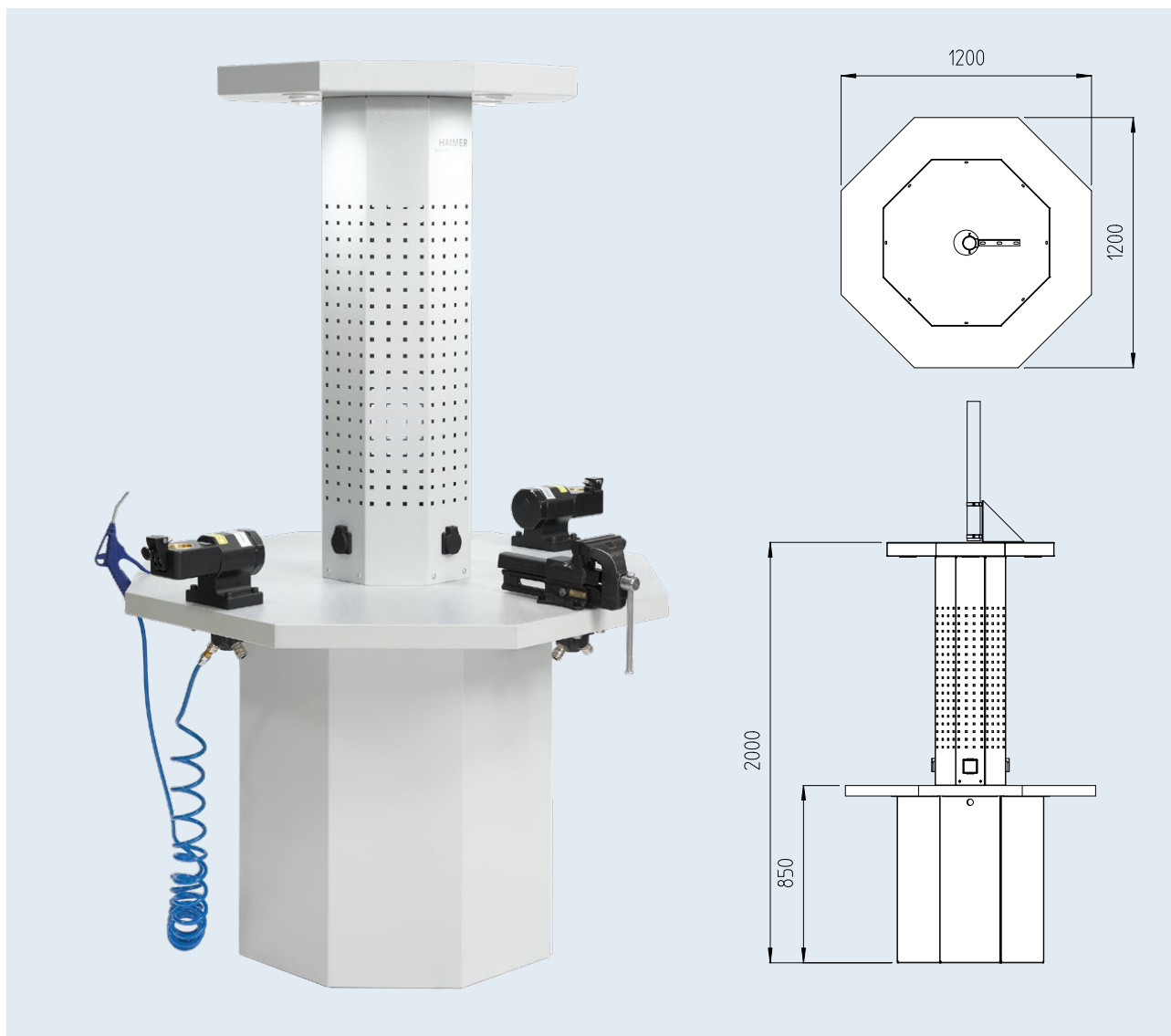


Description	Order No.
Frame to hold the shelves in the 4-fold vertical cabinet	<a href="#">84.805.07.01</a>
Frame to hold the shelves in the 2-fold vertical cabinet	<a href="#">84.805.07.02</a>
Frame to hold the shelves in the 2-fold vertical cabinet (extra wide)	<a href="#">84.805.07.03</a>
<b>Shelf SK/BT/CAT</b>	
Shelf to hold 12 SK30/BT30/CAT30 holders	<a href="#">84.805.07.032</a>
Shelf to hold 4 SK40/BT40/CAT40 holders	<a href="#">84.805.07.040</a>
Shelf to hold 6 SK40/BT40/CAT40 holders	<a href="#">84.805.07.041</a>
Shelf to hold 12 SK40/BT40/CAT40 holders	<a href="#">84.805.07.042</a>
Shelf to hold 4 SK50/BT50/CAT50 holders	<a href="#">84.805.07.050</a>
Shelf to hold 5 SK50/BT50/CAT50 holders	<a href="#">84.805.07.051</a>
<b>Shelf HSK</b>	
Shelf to hold 16 HSK-A/C/E 32 holders	<a href="#">84.805.07.132</a>
Shelf to hold 16 HSK-A/C/E 40 holders	<a href="#">84.805.07.140</a>
Shelf to hold 4 HSK-A/C/E 40 holders	<a href="#">84.805.07.141</a>
Shelf to hold 12 HSK-A/C/E 50 holders	<a href="#">84.805.07.150</a>
Shelf to hold 4 HSK-A/C/E 63 holders	<a href="#">84.805.07.163</a>
Shelf to hold 6 HSK-A/C/E 63 holders	<a href="#">84.805.07.164</a>
Shelf to hold 12 HSK-A/C/E 63 holders	<a href="#">84.805.07.165</a>
Shelf to hold 5 HSK-A/C/E 80 holders	<a href="#">84.805.07.181</a>
Shelf to hold 4 HSK-A/C/E 100 holders	<a href="#">84.805.07.110</a>
Shelf to hold 5 HSK-A/C/E 100 holders	<a href="#">84.805.07.111</a>
Shelf to hold 4 HSK-A/C/E 125 holders	<a href="#">84.805.07.125</a>
<b>Other Shelves</b>	
Shelf to hold 12 PSC 32 holders	<a href="#">84.805.07.230</a>
Shelf to hold 12 PSC 40 holders	<a href="#">84.805.07.240</a>
Shelf to hold 12 PSC 50 holders	<a href="#">84.805.07.250</a>
Shelf to hold 6 PSC 63 holders	<a href="#">84.805.07.260</a>
Shelf to hold 4 VDI25 holders	<a href="#">84.805.07.325</a>
Shelf to hold 4 VDI40 holders	<a href="#">84.805.07.340</a>
Shelf to hold 5 Makino F-80 holders	<a href="#">84.805.07.680</a>
Shelf to hold 3 balancing adapter	<a href="#">84.805.07.401</a>
Shelf without plain (extra wide)	<a href="#">84.805.07.801</a>

Further shelves available upon request

Technical data subject to change without prior notice

ASSEMBLY STATION



**Use:**

- 360° accessible assembly area
- Middle column with perforated tin wall equipped with 3 x 230 V sockets and 4 LED spots
- The assembly station is perfectly suited for a peripheral, space-saving placement next to the machining center or centrally in the tool assembly room
- Heavy Duty workplace

Delivery includes:

- 4 double compressed air connections
- 4 LED lighting spots

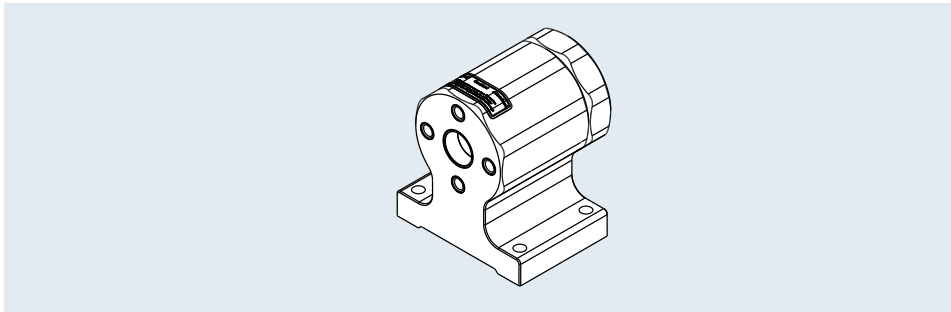
Description

Assembly station

Order No.

**84.803.00.3**

## ASSEMBLY STATION – ACCESSORIES



### Tool Clamp – Tool-assembly device:

- Secure tool assembly with minimal physical effort
- Quick-change function for different taper interfaces – without additional tools
- Accident-free assembly of cutting tools
- Elastic locking bolt
- Mechanical security pin
- Better tool clamping, thanks to optimum ergonomics
- Replaceable brass inserts protect the taper surface
- Required space 140 x 100 mm



Tool Clamp



Tool holder SK



Vice

<b>Tool Clamp – without tool holder, 4 x 90° indexable</b>	
<b>Order No.</b>	<b>84.700.00</b>

<b>Tool holder SK (DIN/MAS-BT/CAT)</b>	
<b>Order No.</b>	<b>Type</b>
<a href="#"><u>84.701.30</u></a>	SK/ISO 30
<a href="#"><u>84.701.40</u></a>	SK/ISO 40
<a href="#"><u>84.701.50</u></a>	SK/ISO 50

<b>Tool holder HSK-A (DIN 69893/1)</b>	
<b>Order No.</b>	<b>Type</b>
<a href="#"><u>84.702.40</u></a>	HSK-A40
<a href="#"><u>84.702.50</u></a>	HSK-A50
<a href="#"><u>84.702.63</u></a>	HSK-A63
<a href="#"><u>84.702.80</u></a>	HSK-A80
<a href="#"><u>84.702.10</u></a>	HSK-A100

<b>Tool holder HSK-C/HSK-E (DIN 69893/1)</b>	
<b>Order No.</b>	<b>Type</b>
<a href="#"><u>84.703.32</u></a>	HSK-C/E32
<a href="#"><u>84.703.40</u></a>	HSK-C/E40
<a href="#"><u>84.703.50</u></a>	HSK-C/E50
<a href="#"><u>84.703.63</u></a>	HSK-C/E63
<a href="#"><u>84.703.80</u></a>	HSK-C/E80

<b>Tool holder HSK-F</b>	
<b>Order No.</b>	<b>Type</b>
<a href="#"><u>84.704.63</u></a>	HSK-F63
<a href="#"><u>84.704.80.M</u></a>	HSK-F80 MAKINO

<b>Tool holder PSC</b>	
<b>Order No.</b>	<b>Type</b>
<a href="#"><u>84.705.40</u></a>	PSC 40
<a href="#"><u>84.705.50</u></a>	PSC 50
<a href="#"><u>84.705.60</u></a>	PSC 63

<b>Tool holder KM4X100</b>	
<b>Order No.</b>	<b>Type</b>
<a href="#"><u>84.706.4X.100</u></a>	KM4X

<b>Vice</b>	
<b>Order No.</b>	<b>84.810.22</b>

CONNECTION PARTS



**Use:**

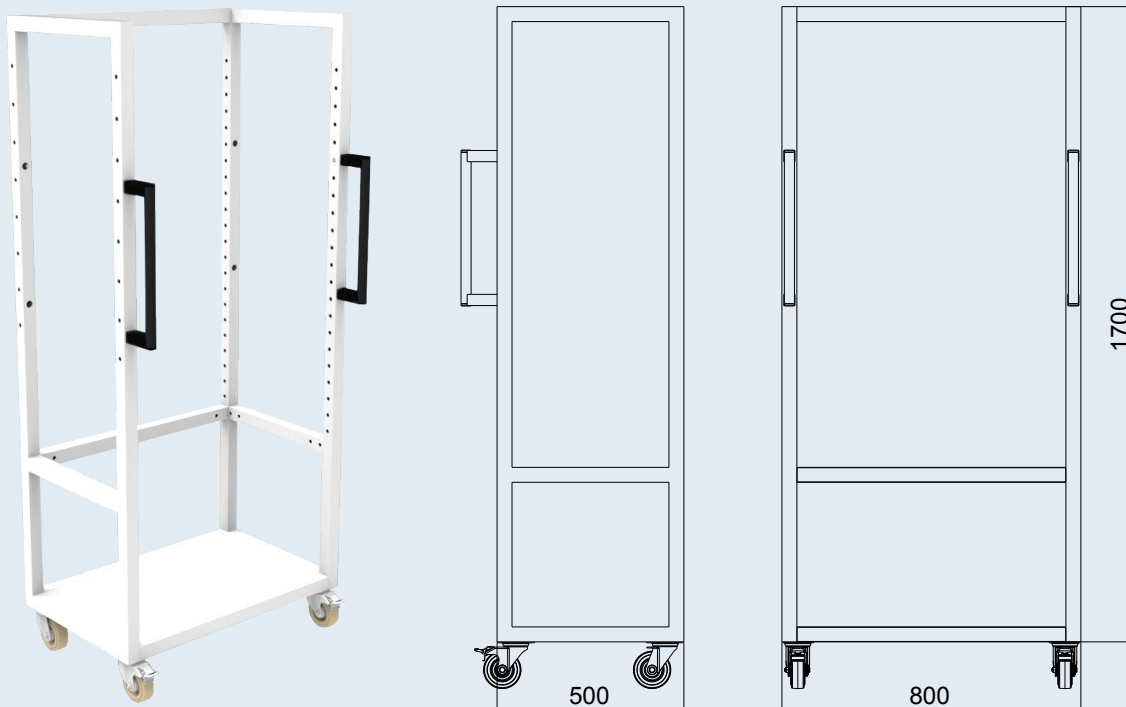
- Intermediate segment in order to connect the individual modules
- Each intermediate segment is equipped with a perforated wall and lighting spots

Description	Order No.
<b>Connection part</b>	
<b>Connection part 50 cm wide with 1 LED spot and perforated plate</b>	<b><a href="#">84.806.00.3</a></b>
<b>Connection part 100 cm wide with 2 LED spots and perforated plate for TD Preset</b>	<b><a href="#">84.806.01.3</a></b>
<b>Connection part 100 cm wide with 2 LED spots and perforated plate</b>	<b><a href="#">84.806.03.3</a></b>
<b>Light Bar superstructure for Power Clamp Premium Plus</b>	<b><a href="#">84.806.02.3</a></b>



## TOOL HOLDER CART

### Tool holder cart - base frame



#### Use:

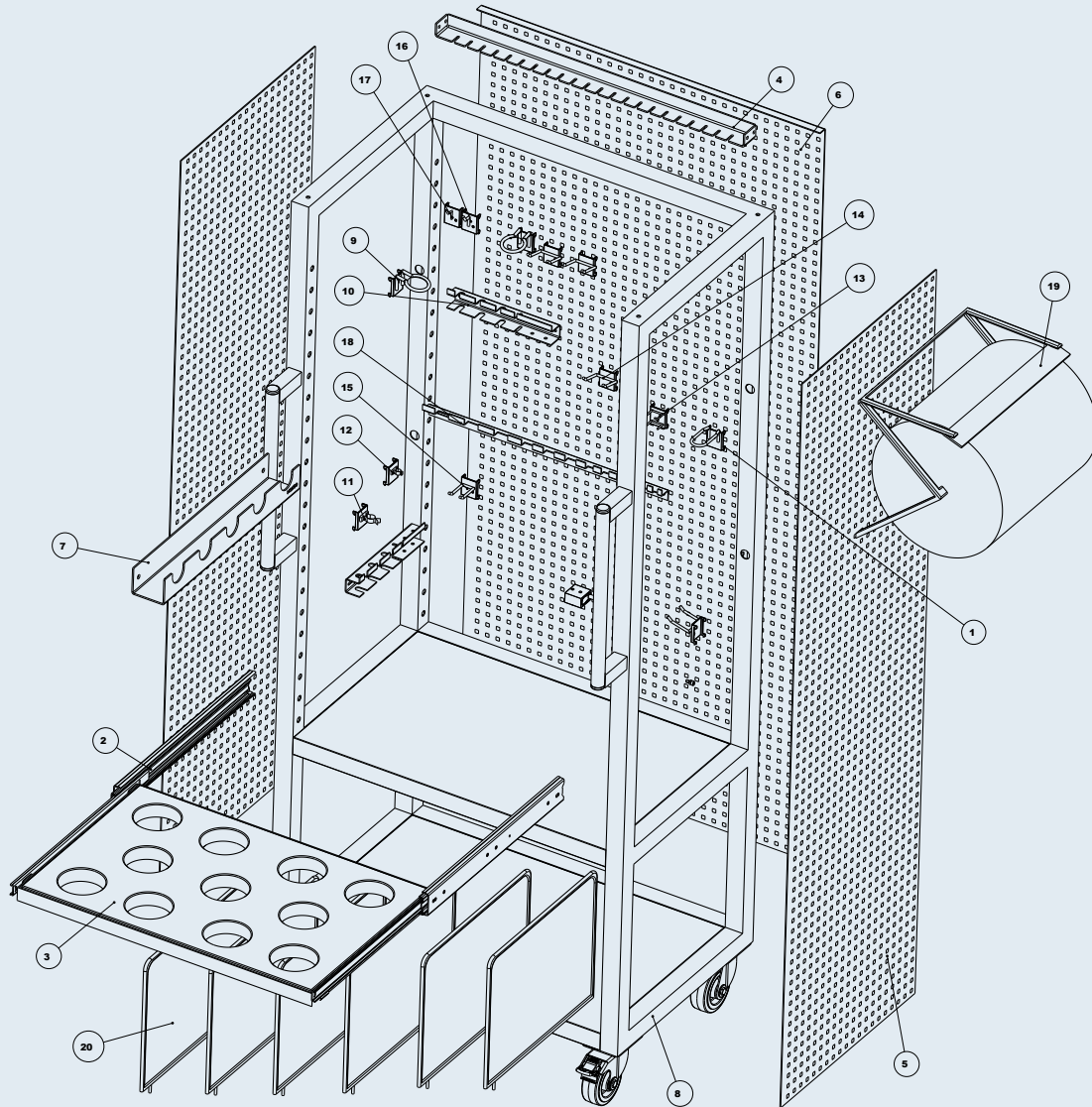
- Standard frame with four wheels, brakes and two handles
- Individual delivery by using a predefined modular system
- Safe transportation of tools and accessories to the machine
- More organization in the machine area
- More clearly arranged than commercially available tool carts
- Tool cart for grinding wheel adapters (held using standard size gripper grooves)
- Tool cart works for any tool used at the machine, no matter if it has an internal hexagon, external hexagon, hook wrench, rubber mallet, gauge etc.
- Tool cart for balancing machine accessories to hold balancing adapters, HG collets etc.

TOOL HOLDER CART

Tool holder cart – Configuration examples

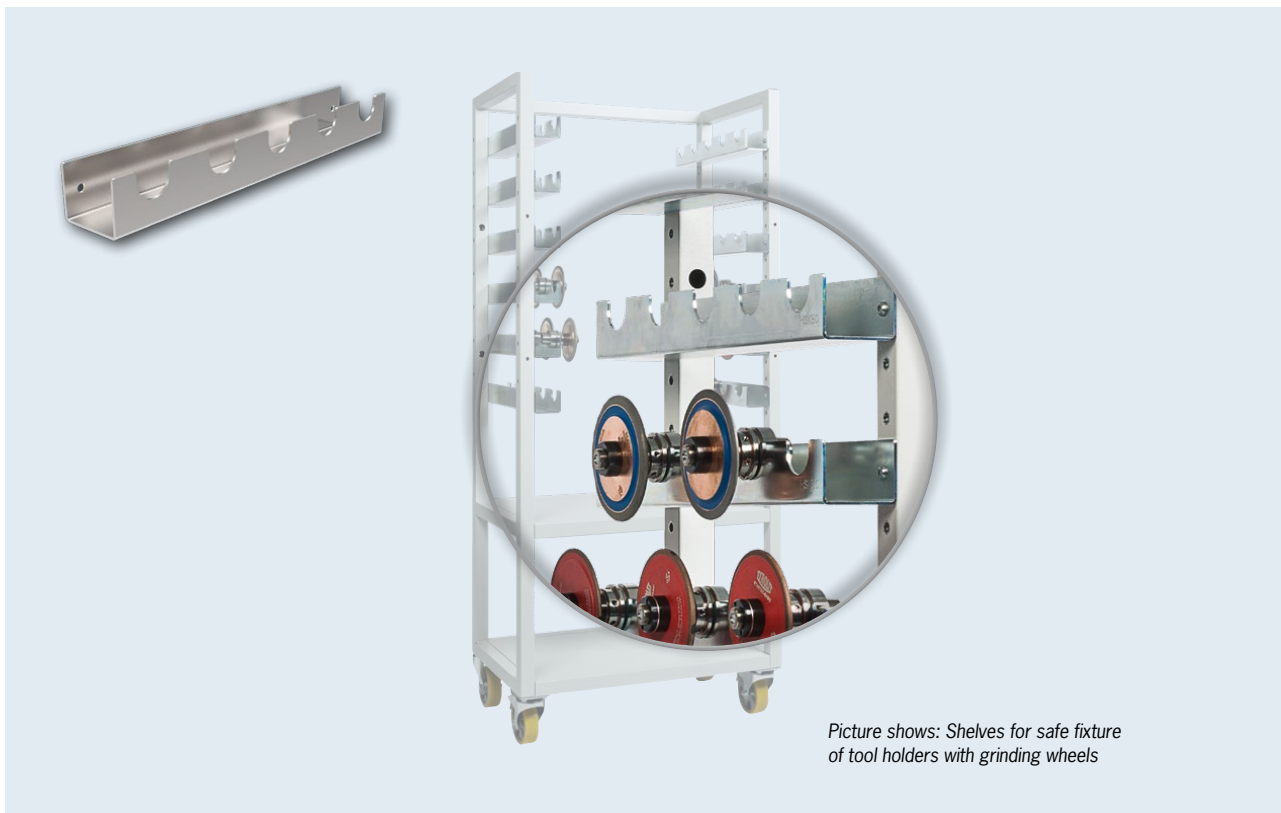


## TOOL HOLDER CART DESIGN



1	Pliers holder 7x40	11	Tool clip Ø 25 mm
2	Drawer slide	12	Tool clip Ø 12 mm
3	Shelf for balancing adapters	13	Articulated wrench hook (28 mm x Ø 3 mm)
4	Shelf for collets	14	Double hook (50 mm x 40 mm)
5	Perforated plate long version (side)	15	Double hook (55 mm x 25 mm)
6	Perforated plate long version (back)	16	Hook (24 mm x Ø 5)
7	Shelf for tool holders	17	Hook (22 mm x Ø 3)
8	Base cart	18	Screw wrench holder
9	Ring holder (inside Ø 40 mm)	19	Paper dispenser (without paper roll)
10	Screwdriver holder	20	Partition wall

TOOL HOLDER CART – ACCESSORIES  
SHELVES



Picture shows: Shelves for safe fixture of tool holders with grinding wheels

**Use:**

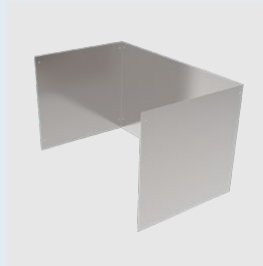
– Shelves for safe tool holder fixture

Description	Order No.
<b>Shelves for tool holder cart</b>	
<b>8 pieces without plain</b>	<b><a href="#">84.808.00.01</a></b>
<b>Shelves SK</b>	
SK30: 8 pcs. for 5 pcs. tool holders each	<a href="#">84.808.00.030</a>
SK40: 8 pcs. for 5 pcs. tool holders each	<a href="#">84.808.00.040</a>
SK50: 8 pcs. for 4 pcs. tool holders each	<a href="#">84.808.00.050</a>
<b>Shelves BT</b>	
BT30: 8 pcs. for 5 pcs. tool holders each	<a href="#">84.808.00.130</a>
BT40: 8 pcs. for 4 pcs. tool holders each	<a href="#">84.808.00.140</a>
BT50: 8 pcs. for 4 pcs. tool holders each	<a href="#">84.808.00.150</a>
<b>Shelves CAT</b>	
CAT40: 8 pcs. for 4 pcs. tool holders each	<a href="#">84.808.00.240</a>
CAT50: 8 pcs. for 4 pcs. tool holders each	<a href="#">84.808.00.250</a>
<b>Shelves HSK</b>	
HSK-A/E 32: 8 pcs. for 5 pcs. tool holders each	<a href="#">84.808.00.332</a>
HSK-A/E/F 40: 8 pcs. for 5 pcs. tool holders each	<a href="#">84.808.00.340</a>
HSK-A/E/F 50: 8 pcs. for 5 pcs. tool holders each	<a href="#">84.808.00.350</a>
HSK-A/E/F 63: 8 pcs. for 5 pcs. tool holders each	<a href="#">84.808.00.363</a>
HSK-A/E/F 80: 8 pcs. for 4 pcs. tool holders each	<a href="#">84.808.00.380</a>
HSK-A 100: 8 pcs. for 4 pcs. tool holders each	<a href="#">84.808.00.310</a>
<b>Shelves PSC 63</b>	
PSC 63: 8 pcs. for 5 pcs. tool holders each	<a href="#">84.808.00.460</a>

TOOL HOLDER CART – ACCESSORIES



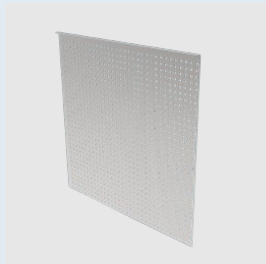
Base frame



Metal cover plate



Drawer insert for balancing adapters



Perforated plate



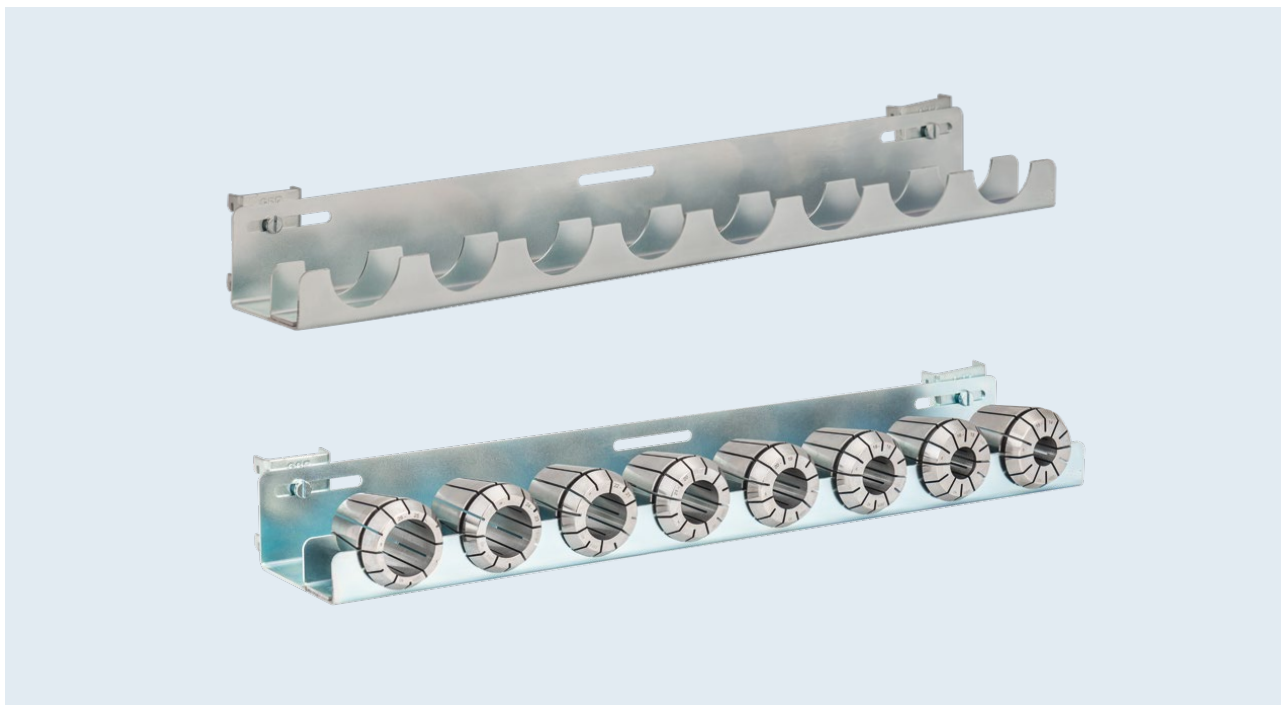
Partition wall



Paper dispenser

Description	Order No.
<b>Perforated plate</b>	
Back long	<a href="#"><u>140056-0013</u></a>
Back short	<a href="#"><u>140056-0009</u></a>
Side long	<a href="#"><u>140056-0014</u></a>
Side short	<a href="#"><u>140056-0010</u></a>
<b>Metal cover plate</b>	
Long	<a href="#"><u>140056-0008</u></a>
Short	<a href="#"><u>140956-0005</u></a>
<b>Drawer insert for balancing adapters</b>	
Angle plate frame	<a href="#"><u>140056-0006</u></a>
Shelf	<a href="#"><u>140056-0007</u></a>
Drawer slide	<a href="#"><u>140956-0006</u></a>
<b>Partition wall</b>	
Partition wall (6 piece bottom plate)	<a href="#"><u>140056-0015</u></a>
<b>Paper dispenser</b>	
Paper dispenser without paper roll	<a href="#"><u>84.810.23</u></a>

PERFORATED PLATE – ACCESSORIES  
 HOLDER RACKS



**Use:**

– Holder racks for secure storage of collets

Description	Order No.
<b>Holder Racks for ER Collets</b>	
Holder rack for 21 pcs. ER11 collets	<a href="#"><u>84.809.011</u></a>
Holder rack for 17 pcs. ER16 Collets and ER16 Power Collets	<a href="#"><u>84.809.016</u></a>
Holder rack for 12 pcs. ER20 collets	<a href="#"><u>84.809.020</u></a>
Holder rack for 12 pcs. ER25 Collets and ER25 Power Collets	<a href="#"><u>84.809.025</u></a>
Holder rack for 11 pcs. ER32 Collets and ER32 Power Collets	<a href="#"><u>84.809.032</u></a>
Holder rack for 8 pcs. ER40 collets	<a href="#"><u>84.809.040</u></a>
<b>Holder Racks for OZ Collets</b>	
Holder rack for 15 pcs. OZ collets Ø 2–16 mm	<a href="#"><u>84.809.116</u></a>
Holder rack for 11 pcs. OZ collets Ø 2–25 mm	<a href="#"><u>84.809.125</u></a>
Holder rack for 8 pcs. OZ collets Ø 6–32 mm	<a href="#"><u>84.809.132</u></a>
Holder rack for 7 pcs. OZ collets Ø 8–40 mm	<a href="#"><u>84.809.140</u></a>
Holder rack for 6 pcs. OZ collets Ø 4–50 mm	<a href="#"><u>84.809.150</u></a>
<b>Holder Racks for HG Collets</b>	
Holder rack for 16 pcs. HG01 collets	<a href="#"><u>84.809.201</u></a>
Holder rack for 16 pcs. HG02 collets	<a href="#"><u>84.809.202</u></a>
Holder rack for 13 pcs. HG03 collets	<a href="#"><u>84.809.203</u></a>

ACCESSORIES



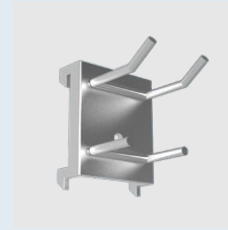
Hook single



Hook double



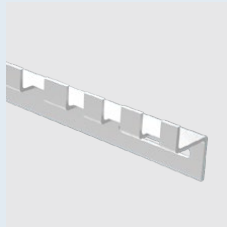
Ring holder



Articulated wrench hook



Tool clip



HG Collet fixture



Screwdriver holder



Paper dispenser

Description	Order No.
<b>Accessories for perforated plate</b>	
Hook single Ø 3 mm	<a href="#">84.810.01</a>
Hook single Ø 5 mm	<a href="#">84.810.02</a>
Hook double 55 x 25 mm	<a href="#">84.810.03</a>
Hook double 50 x 40 mm	<a href="#">84.810.04</a>
Articulated wrench hook	<a href="#">84.810.05</a>
Tool clip Ø 12 mm	<a href="#">84.810.06</a>
Tool clip Ø 15 mm	<a href="#">84.810.07</a>
Ring holder	<a href="#">84.810.08</a>
Base holder	<a href="#">84.810.09</a>
Screwdriver holder for 6 screwdrivers	<a href="#">84.810.10</a>
Wrenchholder for 12 wrenches	<a href="#">84.810.11</a>
Holder for clear film	<a href="#">84.810.12</a>
Storage place (440 mm x 300 mm x 100 mm)	<a href="#">84.810.13.3</a>
Pliers holder	<a href="#">84.810.16</a>
Paper dispenser (without paper roll)	<a href="#">84.810.23</a>
HG Collet fixture	<a href="#">140056-0005</a>
<b>Accessories for electronics</b>	
Electronic connection set with transformer	<a href="#">84.811.00</a>
Transformer	<a href="#">140051-0108</a>
Lamp	<a href="#">140051-0111</a>
Lamp socket	<a href="#">140051-0110</a>
Pipe set for cable laying (Electric/Air)	<a href="#">84.811.10</a>
Country-specific power outlets available on request	
<b>Starter Sets</b>	
Starter set mini	<a href="#">84.810.17</a>
Starter set medium	<a href="#">84.810.17.1</a>
Starter set large	<a href="#">84.810.17.2</a>
<b>Work pads</b>	
Work pad for work bench 600 mm x 1500 mm (transparent, soft PVC)	<a href="#">84.810.18</a>
Work pad for corner module (transparent, soft PVC)	<a href="#">84.810.19</a>
Work pad 690 mm x 500 mm (transparent, soft PVC)	<a href="#">84.810.20</a>
Work pad for assembly station (transparent, soft PVC)	<a href="#">84.810.29</a>

## DAC – DATA ANALYZER & CONTROLLER

# HAIMER i4.0 Tool & Data Management

### HAIMER Data Analyzer & Controller

- System compatibility of each component – everything from the single source “HAIMER”
- Modular set-up – customer can start at each step
- HAIMER DAC connects all hardware components
- Data transfer through all interfaces to the machine tool
- Simplified tool management – perfectly suitable for medium-sized companies
- Reduction of manual data entry errors – high process-security

### 1 CAD/CAM-system

- Simple transfer of the generated job to the tool vending system for commissioning

### 2 Tool Management & Selection

- Signal light indicates open job order
- Clearly arranged selection of the tools needed for the job
- Simple picking through stock shelf indication of all components, through illustration of complete tool assembly and through showing exact position within the stock shelf
- Automatic output of needed components through on-screen selection
- Interactive step-by-step instruction for highest process security and low error rates
- Job transfer to the shrink fit machine through HAIMER DAC

### 3 Shrink Fit Machine Power Clamp Premium i4.0

- Signal light at the right assembly station indicates the next work-step (shrinking in the cutting tool or assembly at the tool clamp)
- Scanning the data-matrix code off the tool holder recalls the required assembly parameters from the database (shrinking parameters, length adjustment, torque etc.)
- Pictographic assembly instruction in the system helps for visual check
- Subsequent job transfer from HAIMER DAC to the tool presetter

### 4 Tool Presetter Microset VIO linear

- Signal light indicates open measuring jobs
- Scanning the data matrix code recalls the open job from HAIMER DAC and starts the automatic measuring process
- Once the measuring job is successfully completed, the values will be stored. If the balancing grade of the tool is defined in the job, the data will be transferred from the HAIMER DAC to the balancing machine

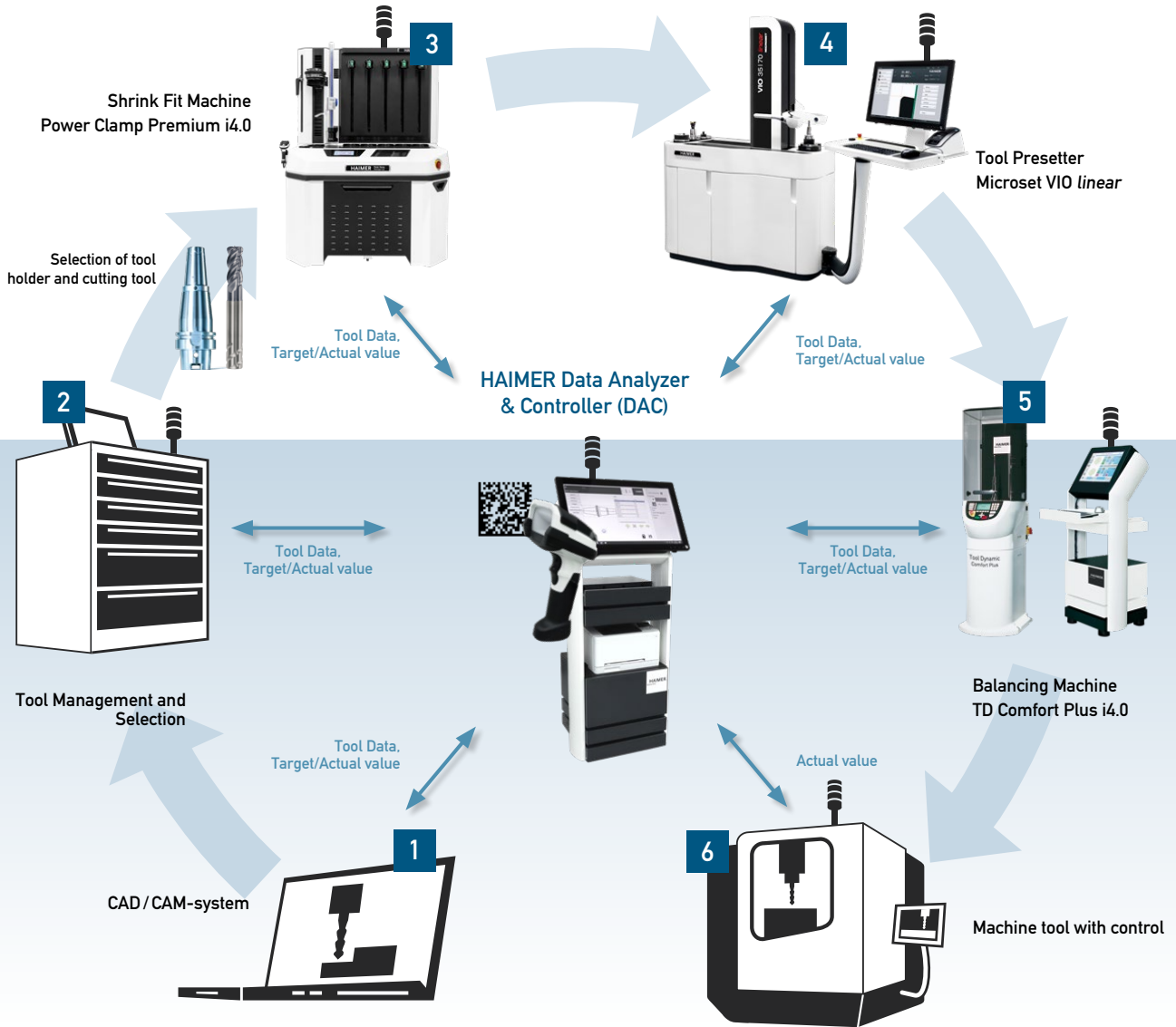
### 5 Balancing Machine TD Comfort Plus i4.0

- Signal light indicates open balancing jobs
- Identification of the tool via data-matrix code and hand scanner
- The requested balancing parameters are recalled from the database
- After recalling the tool ID from the system, the balancing process can be started
- Once the balancing job is successfully completed, the data is transferred to the HAIMER DAC

### 6 Machine tool with control

- Selection of tool and balancing data via data-matrix code scan when loading the machine
- Automatically, the machine control takes over all previously transferred tool data
- Recall and transfer of tool life to the HAIMER DAC via data-matrix code scan when unloading the tool from the machine tool





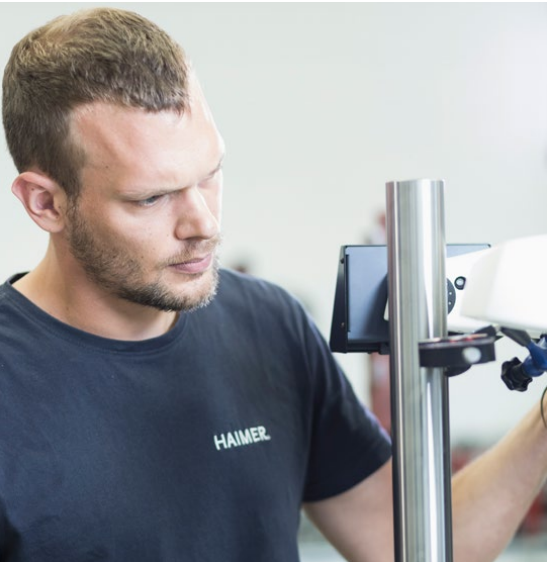
## Always work on a HAIMER proven machine!

Use your HAIMER machine as straight out of the production line.

Even if HAIMER machines are extremely robust, durable and reliable due to the HAIMER high quality components, we recommend the new HAIMER service concept to you in order to guarantee the maximum performance of your HAIMER peripherals.

Go for absolute process safety, highest reliability and maximum performance with your personal and individual HAIMER Quality-Service.

Regardless of Single Maintenance, Premium contract or Quality Wins all-in service – at HAIMER you always get the most suitable service for your requirements.



### Your benefits

- ✓ Early wear detection
- ✓ Maintenance of machine condition
- ✓ Best access to HAIMER specialists
- ✓ Consistent quality level

- Spare parts ✓
- Wear parts ✓
- Software update ✓
- Application training ✓



100% Service

We offer the official HAIMER Service for your tool management room as one single source provider. Combine service offers for all your HAIMER machines and benefit from attractive discounts.

	Single maintenance	Premium maintenance	Quality Wins maintenance
1 machine	Full price	Full price	Full price
2 machines	25% discount *	25% discount *	50% discount *
3 machines	50% discount *	50% discount *	Service for 3 machines, pay only 2 maintenances**

\* On least expensive maintenance  
 \*\* Least expensive maintenance for free



## Set your appointment with the future today

For further information, please visit our website or contact your personal service engineer



- ✓ Maintenance
- ✓ Training
- ✓ Installation
- ✓ Repair



e by HAIMER



Haimer USA, LLC | 134 E. Hill Street | Villa Park, IL 60181 | USA

Phone 1-866-837-3265 | Fax (630) 833-1507 | Mail: [haimer@haimer-usa.com](mailto:haimer@haimer-usa.com) | [www.haimer-usa.com](http://www.haimer-usa.com)

Haimer Mexico | Anillo Vial Fray Junipero Serra No. 16950 Bodega 2 | Micro Parque Industrial Sotavento

Querétaro., QRO. C.P 76127 | Mexico | Phone +442-243-09 50 | [www.haimer-mexico.com](http://www.haimer-mexico.com) | [haimer@haimermx.com](mailto:haimer@haimermx.com)