



Productivity Inc®

15150 – 25th Avenue North, Minneapolis, MN 55447-1981  
 Phone 763-476-8600 Fax 763-476-4092  
 Service Dept: (MN) 763-476-4191 (IA) 319-632-4288 (NE) 402-330-2323  
 Visit us at: [www.productivity.com](http://www.productivity.com) Productivity is ISO 9001:2000 Certified

### ***Fanuc T21iFL and T21iFL-PC2 – PRE-INSTALLATION CHECKLIST – Rev 01/2009***

Installation of your new Fanuc T21iFL and T21iFL-PC2 can be smooth and rapid if preparations are made prior to the delivery of your machine. **Any questions regarding machine installation should be directed to our service department for clarification.** We hope this checklist will aid in a rapid installation of your new machine. **NOTE: The following must be completed prior to our service technician's arrival to install your machine.**

- ✓ Power Requirements for your machine: 200/220v  $\pm$  10%, 3 phase, 15kVa 42 Amp  
 Proper voltage per machine specifications should be ready at machine site. **Do NOT power up the machine. A separate Earth Ground or Cold Water Pipe Ground is Required. (A Conduit-Type Ground Does Not Provide Sufficient Noise Immunity). 440V-480v requires an external step-down transformer.**

NOTE: A power source for options requiring 110v AC/Single Phase or 220V AC/Single Phase power will be required **in addition** to the main power to the machine – options include programmable indexers (Haas, Tsudakoma, Nikken), Oil Skimmers, etc.

- ✓ Customer should furnish and have available the proper supply and types of lubricants required for machine operation.

ITEM	CAPACITY	FLUID TYPE
Coolant	26 Gallons	Water Soluable, Synthetic
Way Lube	½ Gallon	Mobil Vactra #2

**NOTE: You will need to have these fluids on hand prior to installation. Any questions, please contact our Service Department.**

- ✓ Air lines should be routed to the machine location and operational for proper air pressure.

The machine requires a minimum pressure volume air supply of 4 CFM @ 71-135 PSI.
--

- ✓ Machine location should be planned to allow enough room for access panels to be opened and serviced with ease. A minimum of 36" clearance around the machine is required for operator/maintenance access.
- ✓ Weight requirements should be checked to insure that the surface below the machine will have sufficient strength for support and stability. The machine must be set on a solid, sound and stable, steel bar-reinforced concrete slab poured directly on the grade. In general, the 6" concrete floor on industrial buildings is suitable for machine placement. NOTE: *Methods does NOT recommend vibration dampering pads under the machine level pads. As machine settles or moves around, machine weight shifts and causes more problems in the rigidity of the machine cutting. If vibration from other equipment will be present, an isolation foundation may be recommended.*
- ✓ **The machine should be off loaded using a forklift with a capacity of at least 5,000#, and forks 8' in length. Upon arrival of your machine, unpack/uncrate and immediately check for visible damage.**

SHIPPING WEIGHT	SHIPPING DIMENSIONS OF MACHINE
4,400# (Machine)	5'7" L x 7'2" W x 7'4" H (Robodrill Crate)
500# (Accessory)	5'1" L x 2'2" W x 2'3" H (Accessory Crate)
400# (optional PC2 Unit)	26.5" L x 44" W x 60.9" H (optional PC2 Unit)
1,000# (Opt Chip Conv)	12' L x 3'4" W x 6' H (Optional Chip Conveyor)

**See attached for floor space requirements/dimensions.**

- ✓ Remove as much preservative from the machine as possible without having to power up (tables – slides, pulleys, etc.). We recommend mineral spirits to clean. Apply oil when finished to prevent rust.

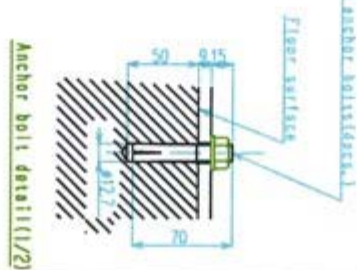
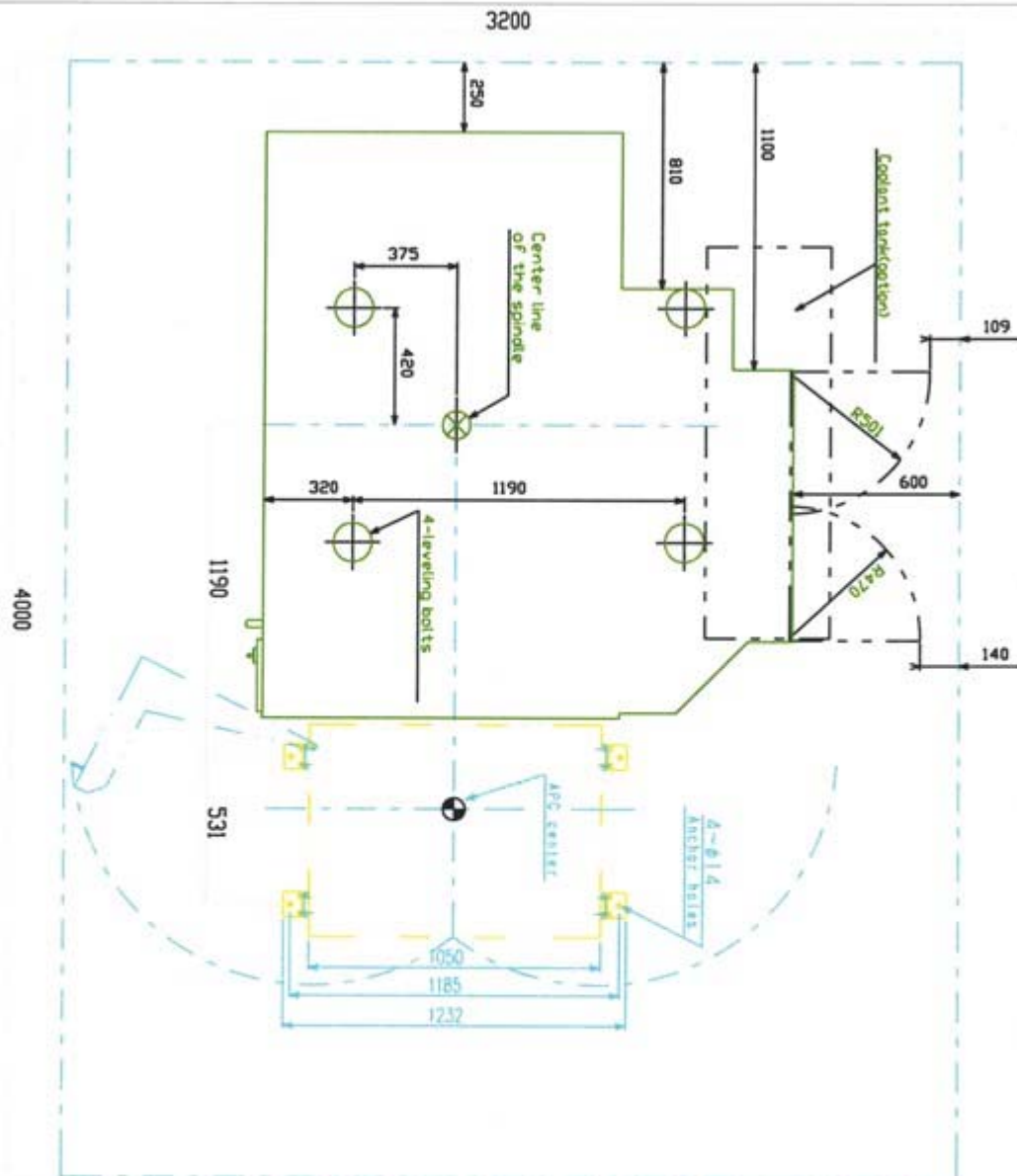
***PLEASE FORWARD THIS TO THE APPROPRIATE PERSON. THANK YOU.***

# Fanuc RoboDrill

**$\alpha$ T-21IFL, PC2**

## CNC Vertical Machining Center with APC

## Pre-Installation Package (PIP)



DL PALLET FLOOR PLAN  
KAWATATEC CORP.  
JUNE 3RD 2005

# Fanuc RoboDrill

αT-21IFL, PC2

CNC Vertical Machining Center with APC

## Pre-Installation Package (PIP)

Fig.5 (a) Taper Shank

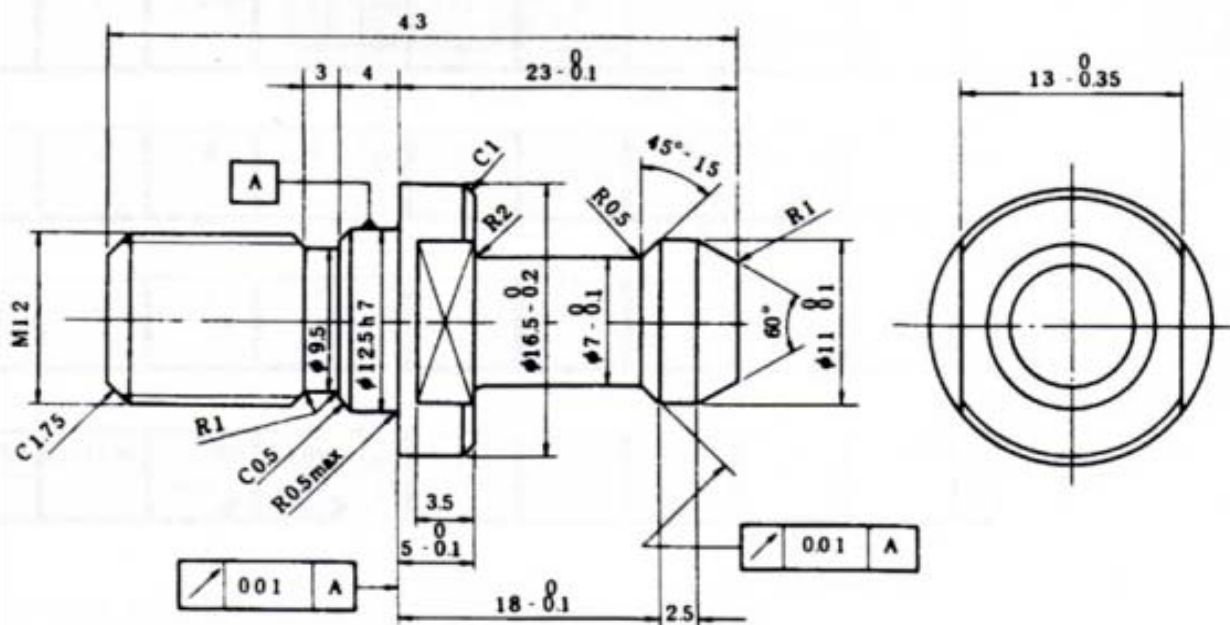


Fig.5 (b) Pull Stud

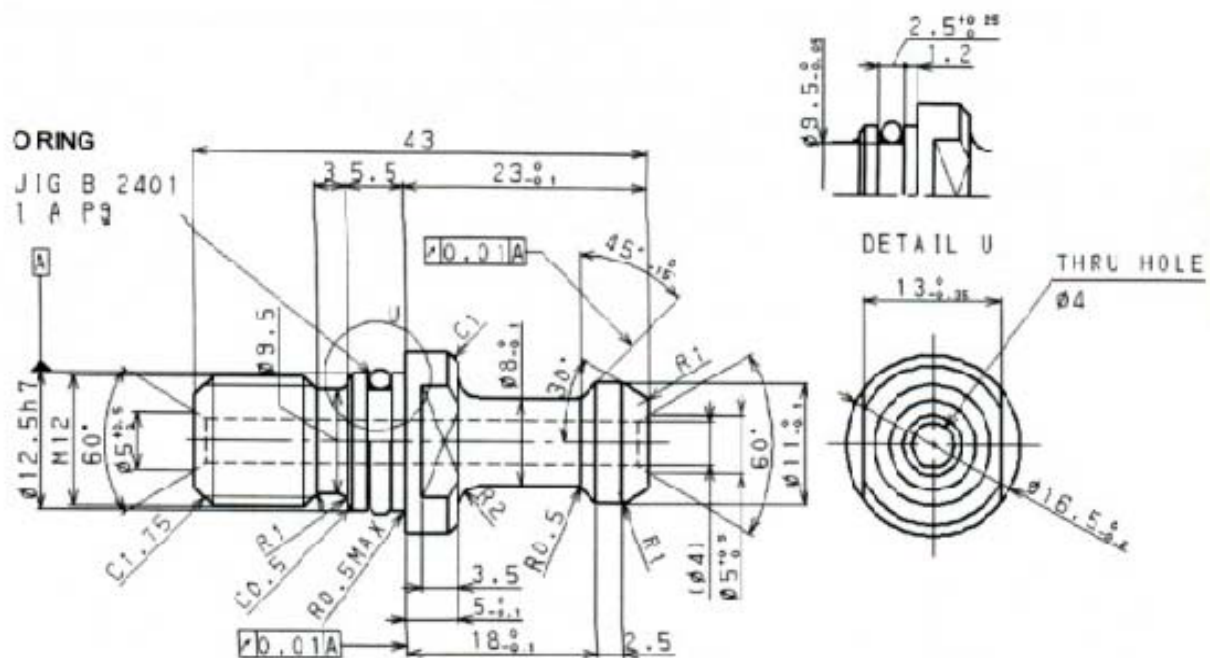


Fig.5 (e) Pull Stud (MAS and BIG PLUS)