



Productivity Inc®

**PIC Nakamura WT300MMY-WT300MMYB Pre-Installation Checklist – Rev 06/2009**

Installation of your new Nakamura WT300MMY-WT300MMYB can be smooth and rapid if preparations are made prior to the delivery of your machine. Any questions regarding machine installation should be directed to our service department for clarification. We hope this checklist will aid in a rapid installation of your new machine. **The following must be completed prior to our service technician arriving to install the machine.**

- Power Requirements for your machine: \*220v/3 phase/99 kVa Amps: 300 Amp (main brkr) Proper voltage per machine specifications should be ready at machine site. **Do NOT power up the machine.** \*NOTE: 220v minimum, 240v maximum. Other power sources (440v/480v) require an External Stepdown transformer. You can purchase through Productivity or your local supplier. An additional power source for options requiring either AC110v or AC220v Single Phase (Barfeeder, Unloaders, etc.) may need to be provided in addition to the main power to the machine Control Cabinet. A separate earth ground wire of the same conductor size as the input power must be connected to the chassis of the machine; must be supplied from the main plant ground. A local conduit-type ground rod does not provide sufficient noise immunity.

- Customer should furnish and have available the proper supply and types of lubricants required for machine operation.

ITEM	CAPACITY	FLUID TYPE
Coolant	92.5 Gal	Water Soluable, Synthetic
Way Lube	1 Gal	Mobil Vactra #2
Hydraulic Oil	15 Gal	Mobil DTE Light

**You will need to have these lubricants on hand at time of installation. Contact our Service Department with any questions or concerns regarding Power and/or Lubrication Requirements.**

- Air lines should be routed to the machine location and operational for proper air pressure.

Minimum air pressure of 81 psi @ 25 cfm.
--

- Machine location should be planned to allow enough room for access panels to be opened and serviced with ease. *Allow an extra 36" behind the machine for maintenance, PLUS an additional 35-40" to the right side of the machine if optional Chip Conveyor is purchased.*

- Weight requirements should be checked to insure that the surface below the machine will have sufficient strength for support and stability. The machine must be set on a solid, sound and stable, steel bar-reinforced concrete slab poured directly on the grade. In general, the 6-12" concrete floor on industrial buildings is suitable for machine placement. Bolting the machine to the floor is not required. *NOTE: Methods does NOT recommend vibration-dampening pads under the machine level pads. As machine settles/moves around, weight shifts and causes more problems in the rigidness of the machine cutting. If vibration from other equipment will be present, an Isolation Foundation may be recommended.*

- **The Nakamura WT300MMY Turning Center is best moved with a forklift. Upon arrival of your machine, unpack and immediately check for visible damage. Call Hope immediately – you will need to take pictures and email to [hriska@productivity.com](mailto:hriska@productivity.com). Make sure you note on BOL BEFORE the driver leaves.**

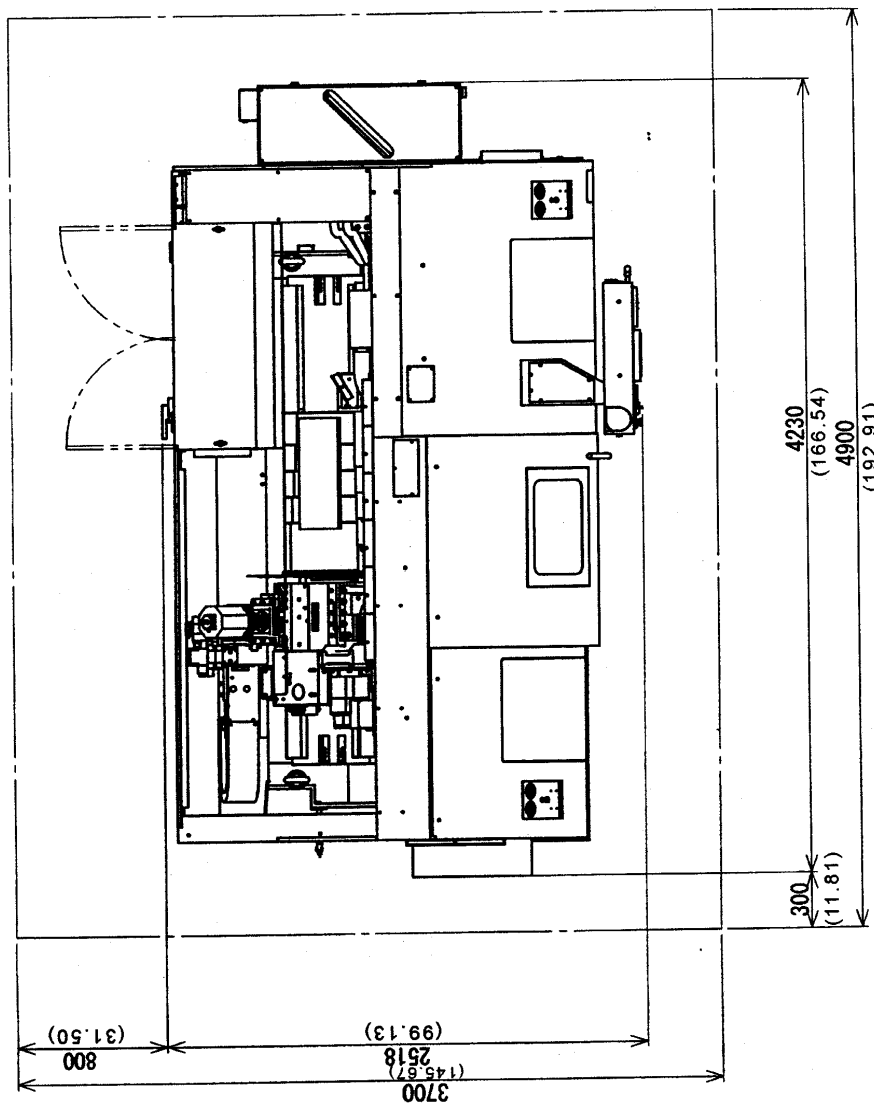
SHIPPING WEIGHT	SHIPPING DIMENSIONS OF MACHINE
26,455# (Machine & Acc Crate)	12'6" L x 8'3" W x 7'8" H (2 pieces – Machine and Accessory Crate)
1,200# (Chip Conveyor)	14' L x 3' W x 6'6" H (Optional Chip Conveyor, skidded)
<i>See attached for floor space layout/dims (add 35-40" to the right side of the machine when the optional Lift-Up Chip Conveyor is purchased)</i>	

- Remove as much preservative from the machine as possible without having to power up (tables – slides, pulleys, etc.). We recommend mineral spirits to clean. Apply oil when finished to prevent rust.

**PLEASE FORWARD THIS TO THE APPROPRIATE PERSON. THANK YOU.**

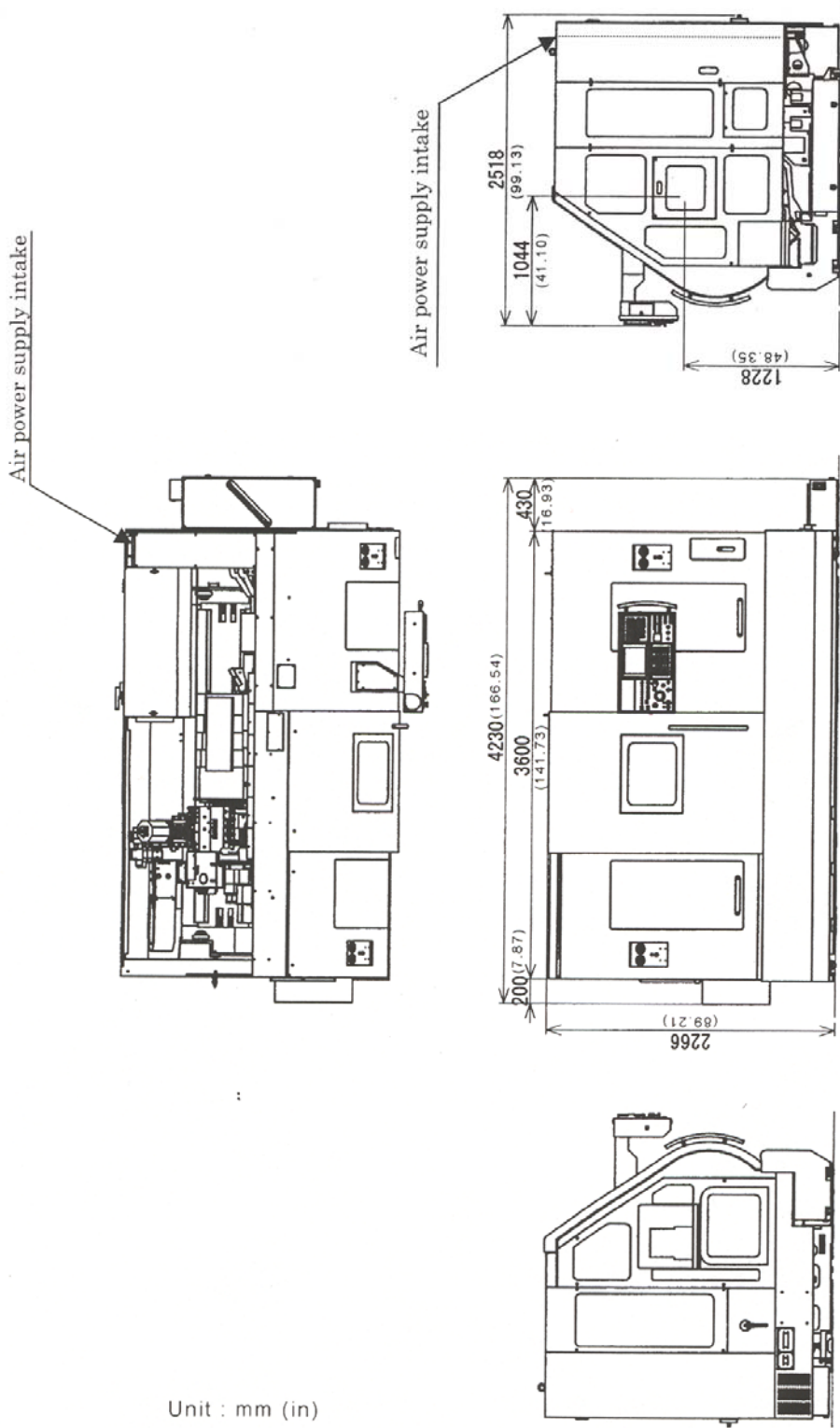
APPENDIX

2-4 Floor Space of WT-300



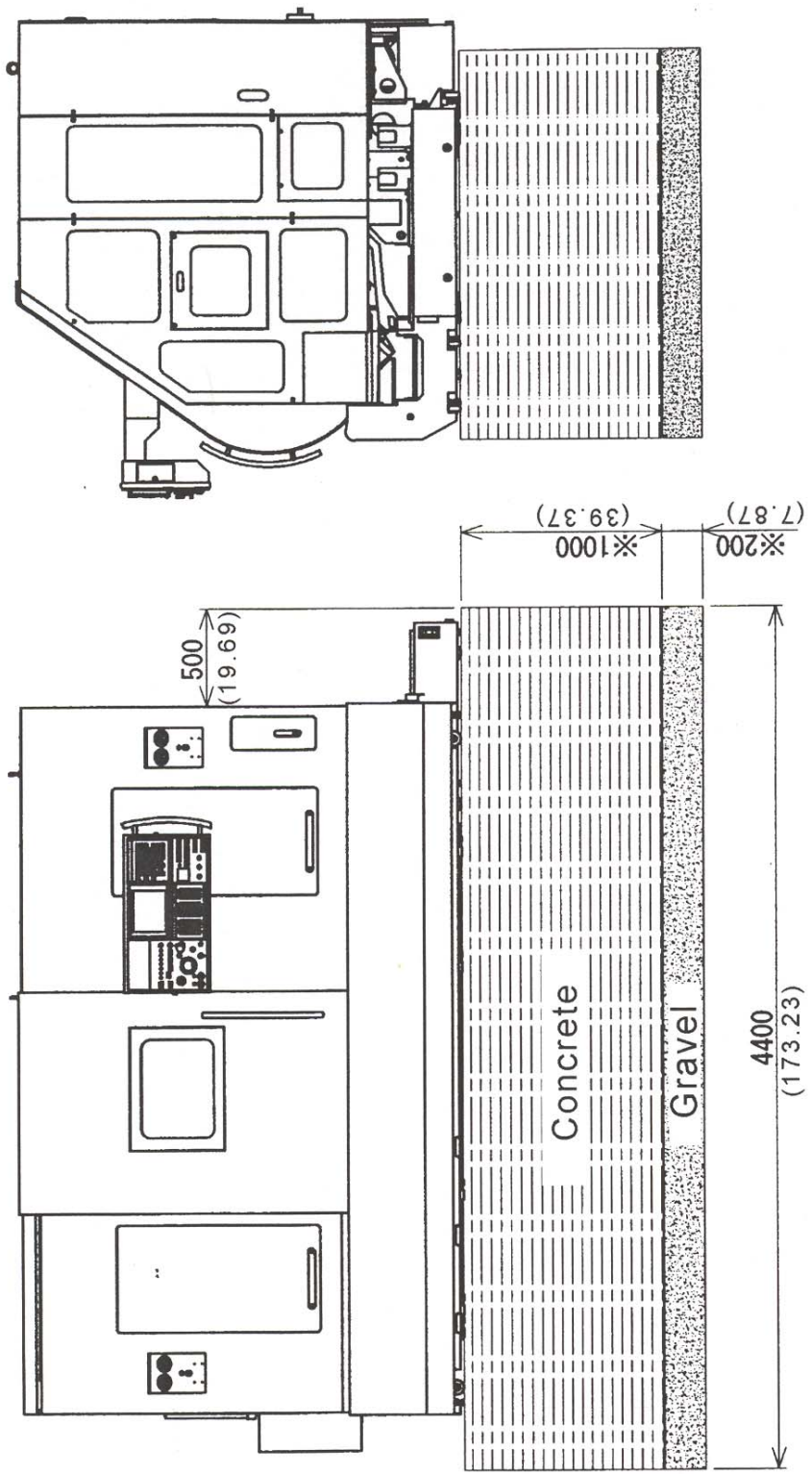
Unit : mm (in)

**2 MACHINE DIMENSIONS**  
**2-1 Front and Side Views of WT-300**



Unit : mm (in)

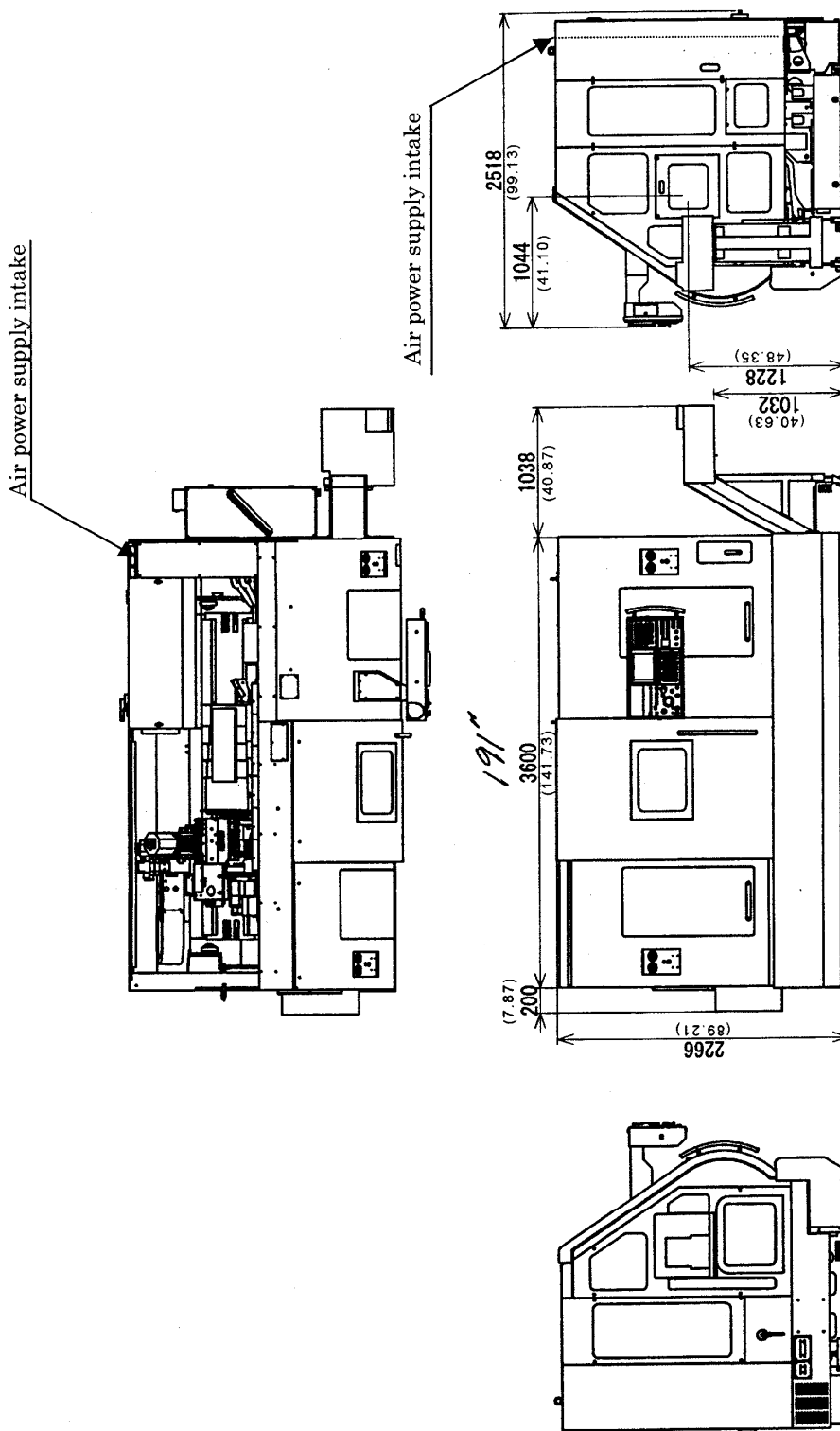
2-3 Foundation Plan of WT-300



※ Determine gravel layer depth according to soil conditions.

APPENDIX

2-2 Front and Side Views of WT-300 with Chip conveyor

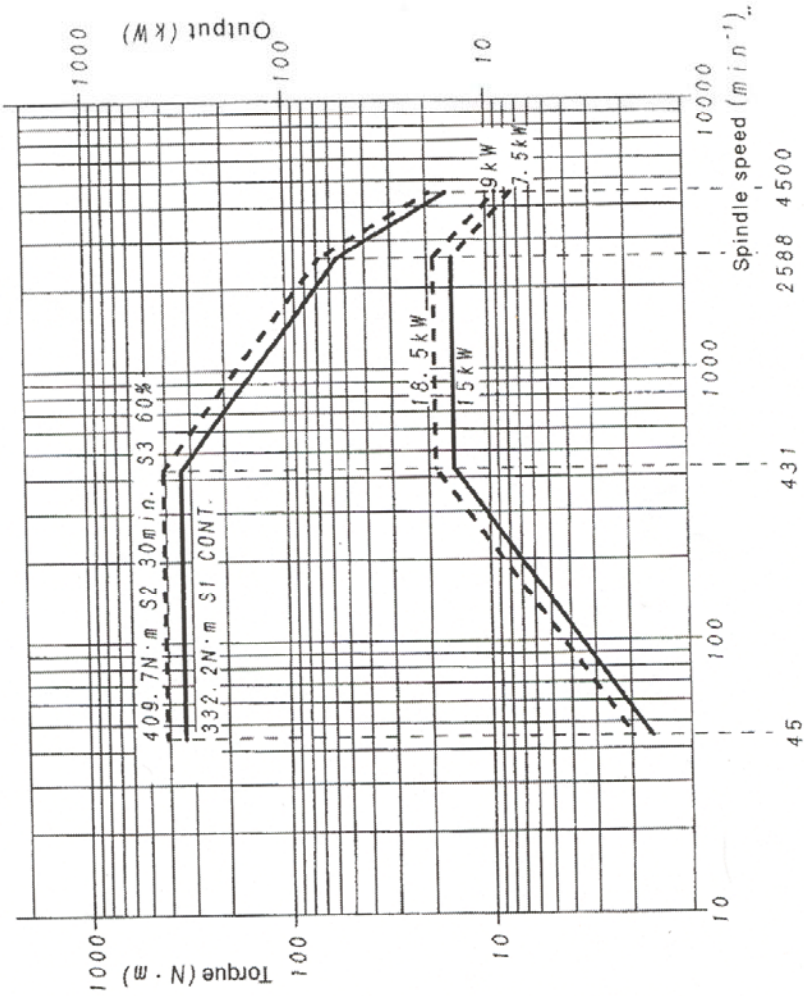




APPENDIX

3-4 Spindle Speed – Torque/Output chart (L/R)(High speed)( $\phi 65$ )

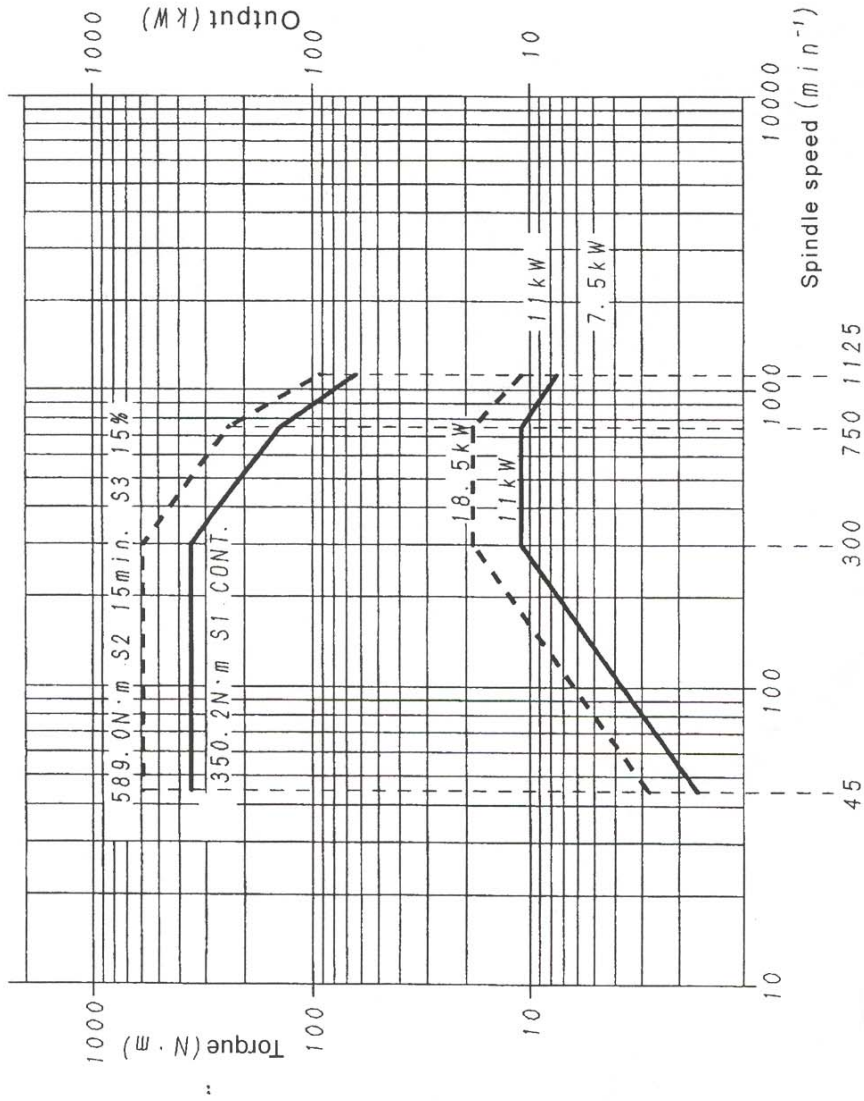
FANUC  $\alpha$  30/6000ip(OP)(18.5/15kw)



Spindle speed for motor speed:(1 : 1.33)

### 3-3 Spindle Speed – Torque/Output chart (L/R)(Low speed)( $\phi 65$ )

FANUC  $\alpha$  30/6000ip(OP)(18.5/15kw)



Spindle speed for motor speed: (1 : 1.33)

4. INSPECTION

Table 4-9 Recommended Oil Table

Maker	Lubricating Oil	Hydraulic Oil	Grease		Lubricating Oil
	VG68	VG32			VG320
Idemitsu	Daphne Super Multi Oil 68	Daphne Super Multi Oil 32	Daphne Molybdenum grease	Daphne Super Coronex No.2	Daphne Super Gear Oil 320
Shell	Tonna Oil T68 or A-R Oil 68	Tellus Oil C32 or J-H Oil 32	Lethinax AM or Sunlight grease MB2	Alvania Grease 2 or Sunlight Grease 2	Omala Oil 320 or G-C Oil 320SE
Mobil	Mobil Vactra Oil No. 2	Mobil DTE Oil Light	Mobil Grease Special	Mobil Mobilux 2	Mobil Gear 632
Mitsubishi	Diamond slide-way 68	Diamond Lub RO32	Diamond Multi purpose M grease 2	Diamond Multi Purpose grease No.2	Diamond gear Lub 320
Fuji	Lubmulti 68	Lubmulti 32		Mighty grease No.2	Mild EP Gear 320
Nisseki	Uniway 68	FBK Oil R032	Molynoc grease 2	Multinoc grease 2	Bonnoc SP320
Cosmo	Mightyway 68	Hydro RO32	Molybdenum grease	Grease Dynamax Super No.2	Cosmo gear SE320
Exxon	Febis K68	Terreso 32	Beacon Q2	Lithtan 2	Spartan EP320
Kygnus	Waylubricant 80	Unit Oil P32	M-5 Grease No. 2	MP Grease No. 2	
Kyodo	Slidus 68	RIX turbine 32	Lisonix grease M-2	Lisonix grease 2	Reductus 320
General	Slideoil 68	General panol 32	Gemico grease AD-2	Gemico grease MP-2	SP GEAROL 320
Mitsui	Slideway E68	Hydic oil 32		Multi grease EP-2	Mild gear EP320
NOK Fleuber			Multemp Q NB50		
Three bond			Three bond 1901		
Castrol	Magnaglide BD68	Hyspin AWS32	Spheerol LMM	Spheerol AP2	Alpha SP320
Remark (Oiling drive Point)	Centralized lubricating oil tank	Hydraulic oil tank	Jaw chuck	Rotary tool holder C-axis spline	C-axis harmonic drive