



15150 25th Avenue North, Minneapolis, MN 55447-1981  
 Phone 763-476-8600 Fax 763-476-4092  
 Service Dept: MN-763-476-4191 IA-319-632-4288 NE-402-330-2323  
 Visit us at: [www.productivity.com](http://www.productivity.com) Productivity is ISO 9001:2000 Certified

Productivity Inc®

**SC-200MY PRE-INSTALLATION CHECKLIST** – Rev 06/2009

Installation of your new Nakamura SC-200MY can be smooth and rapid if preparations are made prior to the delivery of your machine. Any questions regarding machine installation should be directed to our service department for clarification. We hope this checklist will aid in a rapid installation of your new machine.

**NOTE: The following must be completed prior to our service technician arriving to install the machine.**

- Power Requirements for your machine: 220v/3 phase/35 kVa Amperage: 55 Amp  
 Proper voltage per machine specifications should be ready at machine site. **Do NOT power up the machine. A separate earth ground wire of the same conductor size as the input power must be connected to the chassis of the machine; must be supplied from the main plant ground. A local cold-water pipe or ground rod is not sufficient.**

- Customer should furnish and have available the proper supply and types of lubricants required for machine operation.

ITEM	CAPACITY	FLUID TYPE
Coolant	31.7 Gal	Water Soluable, Synthetic
Way Lube	½ Gal	Mobil Vactra #2
Hydraulic Oil	10 Gal	Mobil DTE Light

**You will need to have these lubricants on hand at time of installation.**

- Air lines should be routed to the machine location and operational for proper air pressure.

N/A

- Machine location should be planned to allow enough room for access panels to be opened and serviced with ease. **A minimum of 36” clearance around the machine is required for maintenance and access.**
- Weight requirements should be checked to insure that the surface below the machine will have sufficient strength for support and stability. The machine must be set on a solid, sound and stable, steel bar-reinforced concrete slab poured directly on the grade. In general, the 6” concrete floor on industrial buildings is suitable for machine placement.
- **NOTE: THE LATHE IS BEST LIFTED WITH A FORKLIFT. Upon arrival of your machine, unpack and immediately check for visible damage – CALL Hope immediately. Please take pictures of any damages and email to [hriska@productivity.com](mailto:hriska@productivity.com).**

SHIPPING WEIGHT	SHIPPING DIMENSIONS OF MACHINE
9,380# (Machine and accessories)	6’2” L x 6’4” W x 8’1” H (Machine, skidded/wrapped)
1,000# (Opt Chip Conveyor)	3’ L x 2’6” W x 6’1” H (Accessory Crate)
	12’ L x 3’ W x 5’ 8” H (Opt Chip Conveyor, skidded)
See attached layout for operational dimensions. (Note: Add an additional 40” to the right side of the machine length for an optional Lift-Up Chip Conveyor.)	

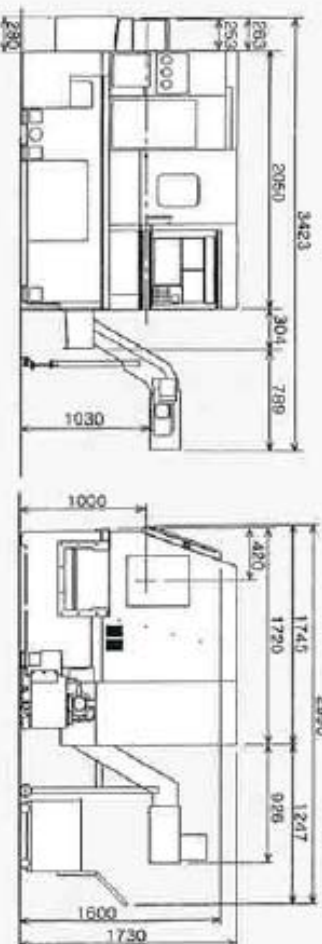
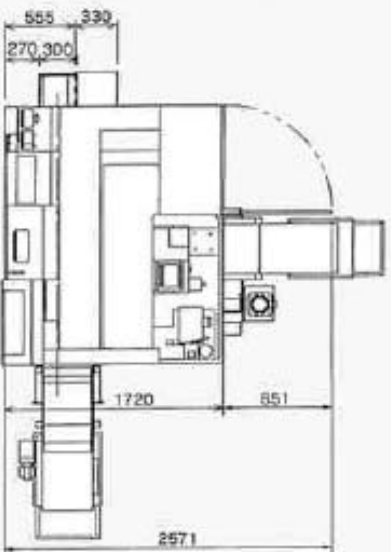
- Remove as much preservative from the machine as possible without having to power up (tables – slides, pulleys, etc.). We recommend mineral spirits to clean. Apply oil when finished to prevent rust.

**PLEASE FORWARD THIS TO THE APPROPRIATE PERSON. THANK YOU.**

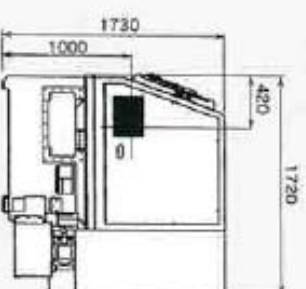
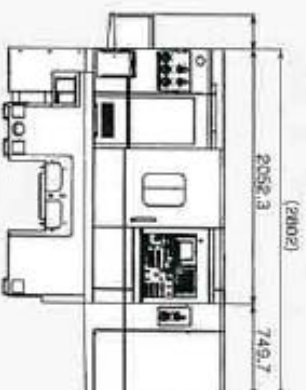
SC-200

Floor Space

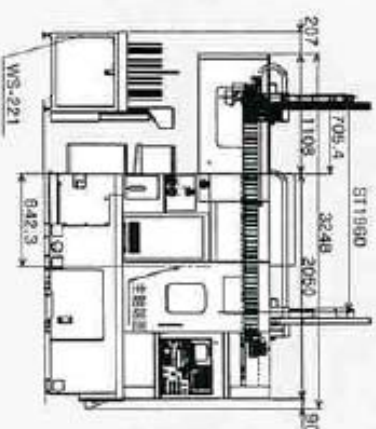
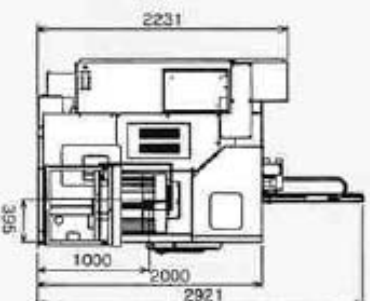
Side-outlet conveyor/ backside outlet conveyor specification



Sub spindle specification



GR-103 +WS-221 specification (Without CE cover)



(unit: mm)

The dimension is subject to change depending on the specifications.



APPENDIX

2-1-2 Ejection at side

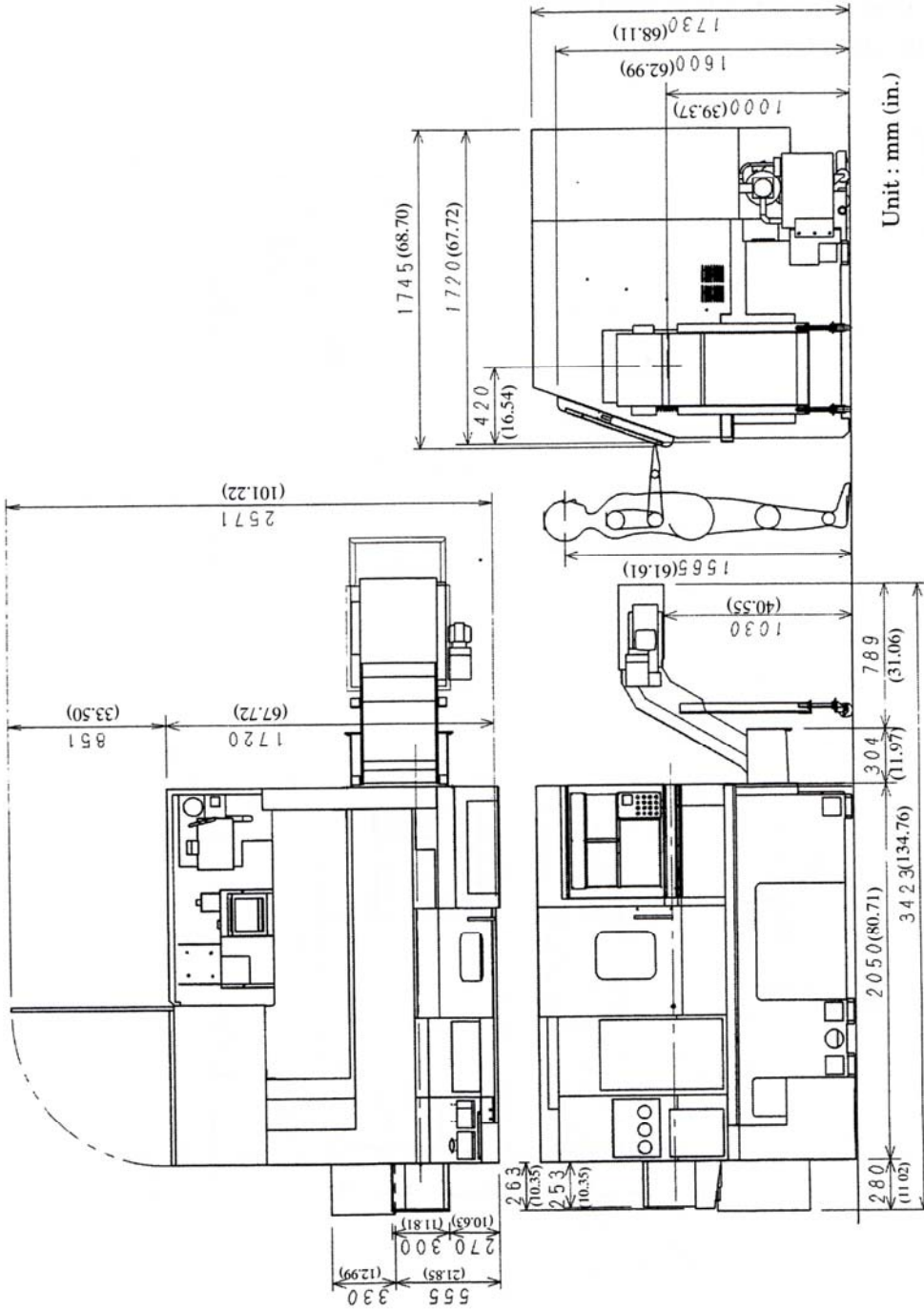


Table 4-9 Recommended Oil Table

Maker	Lubricating Oil	Hydraulic Oil	Grease		Lubricating Oil
	VG68	VG32			VG320
Idemitsu	Daphne Super Multi Oil 68	Daphne Super Multi Oil 32	Daphne Molybdenum grease	Daphne Super Coronex No.2	Daphne Super Gear Oil 320
Shell	Tonna Oil T68 or A-R Oil 68	Tellus Oil C32 or J-H Oil 32	Lethinax AM or Sunlight grease MB2	Alvania Grease 2 or Sunlight Grease 2	Omala Oil 320 or G-C Oil 320SE
Mobil	Mobil Vactra Oil No. 2	Mobil DTE Oil Light	Mobil Grease Special	Mobil Mobilux 2	Mobil Gear 632
Mitsubishi	Diamond slide-way 68	Diamond Lub RO32	Diamond Multi purpose M grease 2	Diamond Multi Purpose grease No.2	Diamond gear Lub 320
Fuji	Lubmulti 68	Lubmulti 32		Mighty grease No.2	Mild EP Gear 320
Nisseki	Uniway 68	FBK Oil R032	Molynoc grease 2	Multinoc grease 2	Bonnoc SP320
Cosmo	Mightyway 68	Hydro RO32	Molybdenum grease	Grease Dyna-max Super No.2	Cosmo gear SE320
Exxon	Febis K68	Terreso 32	Beacon Q2	Lithtan 2	Spartan EP320
Kygnus	Waylubricant 80	Unit Oil P32	M-5 Grease No. 2	MP Grease No. 2	
Kyodo	Slidus 68	RIX turbine 32	Lisonix grease M-2	Lisonix grease 2	Reductus 320
General	Slideoil 68	General panol 32	Gemico grease AD-2	Gemico grease MP-2	SP GEAROL 320
Mitsui	Slideway E68	Hydic oil 32		Multi grease EP-2	Mild gear EP320
NOK Fleuber			Multemp Q NB50		
Three bond			Three bond 1901		
Castrol	Magnaglide BD68	Hyspin AWS32	Spheerol LMM	Spheerol AP2	Alpha SP320
Remark (Oiling drive Point)	Centralized lubricating oil tank	Hydraulic oil tank	Jaw chuck	Rotary tool holder C-axis spline	C-axis harmonic drive