



15150 25th Avenue North, Minneapolis, MN 55447-1981  
 Phone 763-476-8600 Fax 763-476-4092  
 Service Dept: MN-763-476-4191 IA-319-632-4288 NE-402-330-2323  
 Visit us at: [www.productivity.com](http://www.productivity.com) Productivity is ISO 9001:2000 Certified

Productivity Inc®

**PIC Nakamura SC-200 PRE-INSTALLATION CHECKLIST** - Rev 05/2009

Installation of your new Nakamura SC-200 can be smooth and rapid if preparations are made prior to the delivery of your machine. Any questions regarding machine installation should be directed to our service department at one of the phone numbers above for clarification. We hope this checklist will aid in a rapid installation of your new machine. **The following must be completed prior to our service technician arriving to install the machine.**

- Power Requirements for your machine: 220v/3 phase/35 kVa Amperage: 55 Amp  
 Proper voltage per machine specifications should be ready at machine site. **Do NOT power up the machine. A separate earth ground wire of the same conductor size as the input power must be connected to the chassis of the machine; must be supplied from the main plant ground. A local cold-water pipe or ground rod is not sufficient.**
- Customer should furnish and have available the proper supply and types of lubricants required for machine operation.

ITEM	CAPACITY	FLUID TYPE
Coolant	31.7 Gal	Water Soluable, Synthetic
Way Lube	½ Gal	Mobil Vactra #2
Hydraulic Oil	10 Gal	Mobil DTE Light

**You will need to have these lubricants on hand at time of installation.**

- Air lines should be routed to the machine location and operational for proper air pressure.

N/A
-----

- Machine location should be planned to allow enough room for access panels to be opened and serviced with ease. **A minimum of 36" clearance around the machine is required for maintenance and access.**
- Weight requirements should be checked to insure that the surface below the machine will have sufficient strength for support and stability. The machine must be set on a solid, sound and stable, steel bar-reinforced concrete slab poured directly on the grade. In general, the 6" concrete floor on industrial buildings is suitable for machine placement.
- **NOTE: THE LATHE IS BEST LIFTED WITH A FORKLIFT. Upon arrival of your machine, unpack and immediately check for visible damage – CALL Hope immediately. Note any damage or discrepancies on the BOL BEFORE the driver/rigger leaves! Please take pictures of any damages and email to [hriska@productivity.com](mailto:hriska@productivity.com).**

SHIPPING WEIGHT	SHIPPING DIMENSIONS OF MACHINE
8,000# (Machine)	8'1" L x 6'2" W x 6'4" H (Machine, skidded/wrapped)
680# (Accessory Crate)	6'1" L x 2'6" W x 3' H (Accessory Crate)
1,000# (Opt Chip Conveyor)	10' L x 4' W x 6' H (Opt Chip Conveyor, skidded)
<i>Approximate Operational Dimensions: 6,050# (wt) 80.7" L x 101.2" W (See attached layout.) (Note: Add an additional 40" to the right side of the machine length for an optional Lift-Up Chip Conveyor.)</i>	

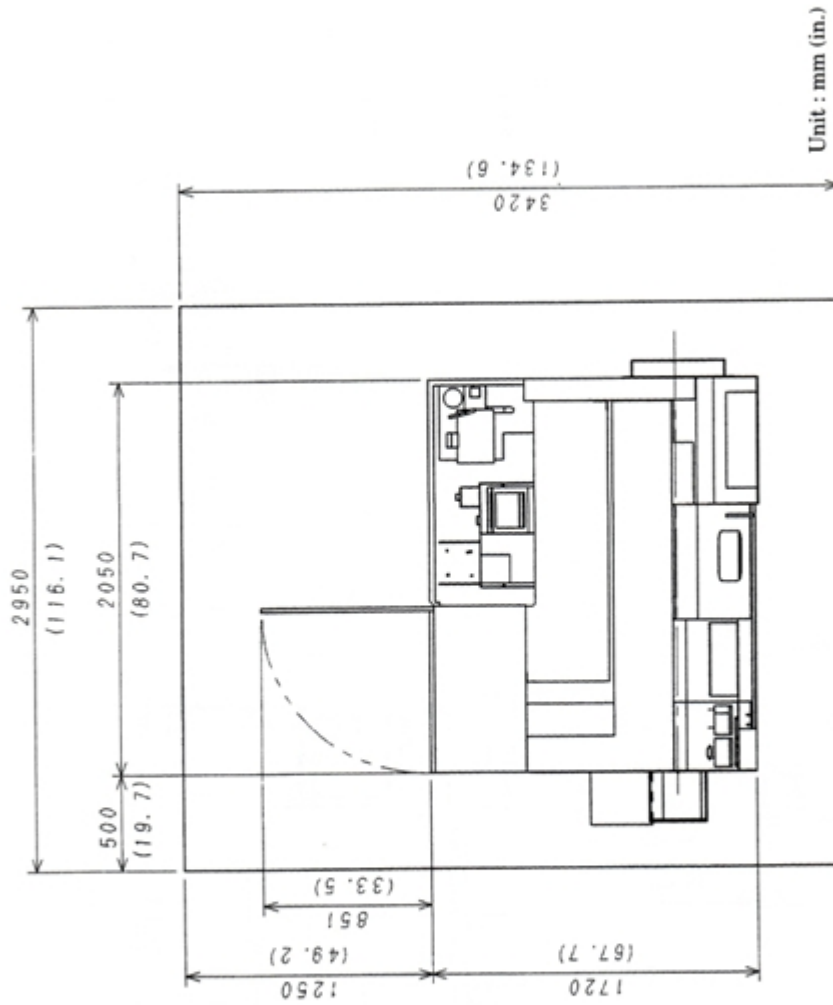
- Remove as much preservative from the machine as possible without having to power up (tables – slides, pulleys, etc.). We recommend mineral spirits to clean. Apply oil when finished to prevent rust.

**PLEASE FORWARD THIS TO THE APPROPRIATE PERSON. THANK YOU.**

APPENDIX

2-2 Maintenance Space

2-2-1 Standard type



APPENDIX

2-1-2 Ejection at side

