



15150 25th Avenue North, Minneapolis, MN 55447-1981  
 Phone 763-476-8600 Fax 763-476-4092  
 Service Dept: MN-763-476-4191 IA-319-632-4288 NE-402-330-2323  
 Visit us at: [www.productivity.com](http://www.productivity.com) Productivity is ISO 9001:2000 Certified

Productivity Inc®

**PIC Nakamura SC-150MBFT Pre-Installation Checklist – Rev 06/2009**

Installation of your new Nakamura SC-150MBFT can be smooth and rapid if preparations are made prior to the delivery of your machine. Any questions regarding machine installation should be directed to our service department for clarification. We hope this checklist will aid in a rapid installation of your new machine. **The following must be completed prior to our service technician arriving to install the machine.**

- Power Requirements for your machine: 220v/3 phase/27 kVa Amperage: 75 Amp  
 Proper voltage per machine specifications should be ready at machine site. **Do NOT power up the machine. A separate earth ground wire of the same conductor size as the input power must be connected to the chassis of the machine; must be supplied from the main plant ground. A local cold-water pipe or ground rod is not sufficient.**

- Customer should furnish and have available the proper supply and types of lubricants required for machine operation.

| ITEM          | CAPACITY   | FLUID TYPE                |
|---------------|------------|---------------------------|
| Coolant       | 30 Gallons | Water Soluable, Synthetic |
| Way Lube      | ½ Gallon   | Mobil Vactra #2           |
| Hydraulic Oil | 10 Gallons | Mobil DTE Light           |

**You will need to have these lubricants on hand at time of installation. Please contact our service department for any questions or concerns.**

- Air lines should be routed to the machine location and operational for proper air pressure.

|   |
|---|
| Machine requires minimum of 81 psi @ 2 CFM. |
|---|

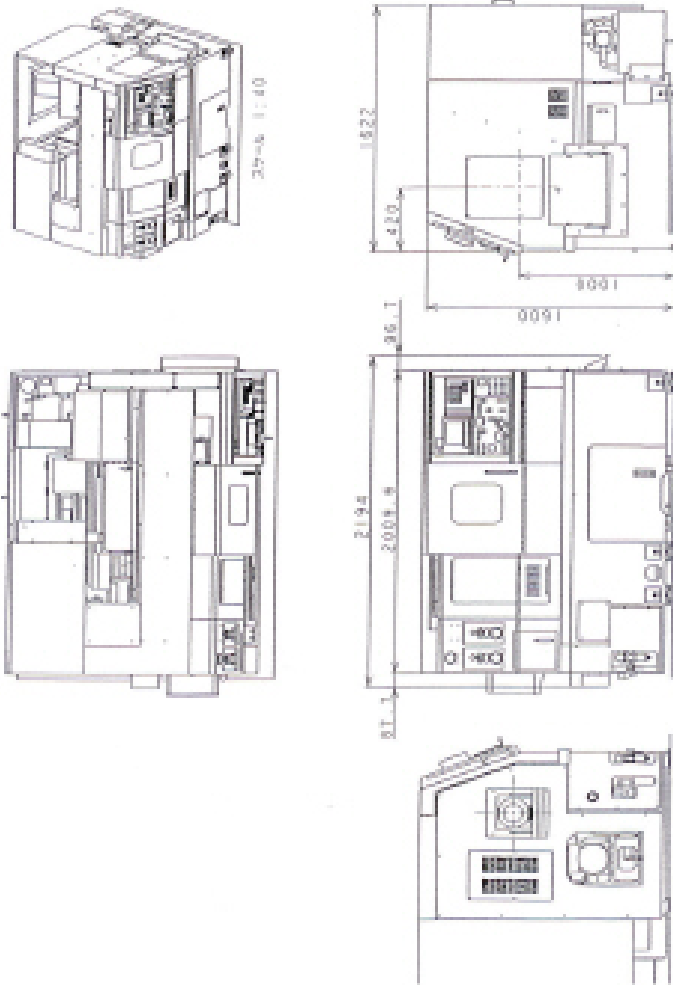
- Machine location should be planned to allow enough room for access panels to be opened and serviced with ease. A minimum of 36" clearance around the machine is required for maintenance and access.
- Weight requirements should be checked to insure that the surface below the machine will have sufficient strength for support and stability. The machine must be set on a solid, sound and stable, steel bar-reinforced concrete slab poured directly on the grade. In general, the 6" concrete floor on industrial buildings is suitable for machine placement.

- **NOTE: THE LATHE IS BEST LIFTED WITH A FORKLIFT. Upon arrival of your machine, unpack and immediately check for visible damage – CALL Hope immediately. Note any damage or discrepancies on the BOL BEFORE the driver/rigger leaves! Please take pictures of any damages and email to [hriska@productivity.com](mailto:hriska@productivity.com).**

| SHIPPING WEIGHT   | SHIPPING DIMENSIONS OF MACHINE   |
|---|--|
| 8,157# (Machine & Accessory Crate)  | 110" L x 64" W x 63" H (2 pieces – Machine and Accessory Crate 6' x 4' x 4') |
| 1,000# (Chip Conveyor)  | 7' L x 3'4" W x 6' H (Chip Conveyor, skidded)                                |
| <i>Operational Dimensions: 5,700# (wt) 150" L x 128" W (Note: Add an additional 40" to the right side of the machine length for Side-Discharge or behind (width) for Rear-Discharge Chip Conveyor.)</i> |  |

- Remove as much preservative from the machine as possible without having to power up (tables – slides, pulleys, etc.). We recommend mineral spirits to clean. Apply oil when finished to prevent rust.

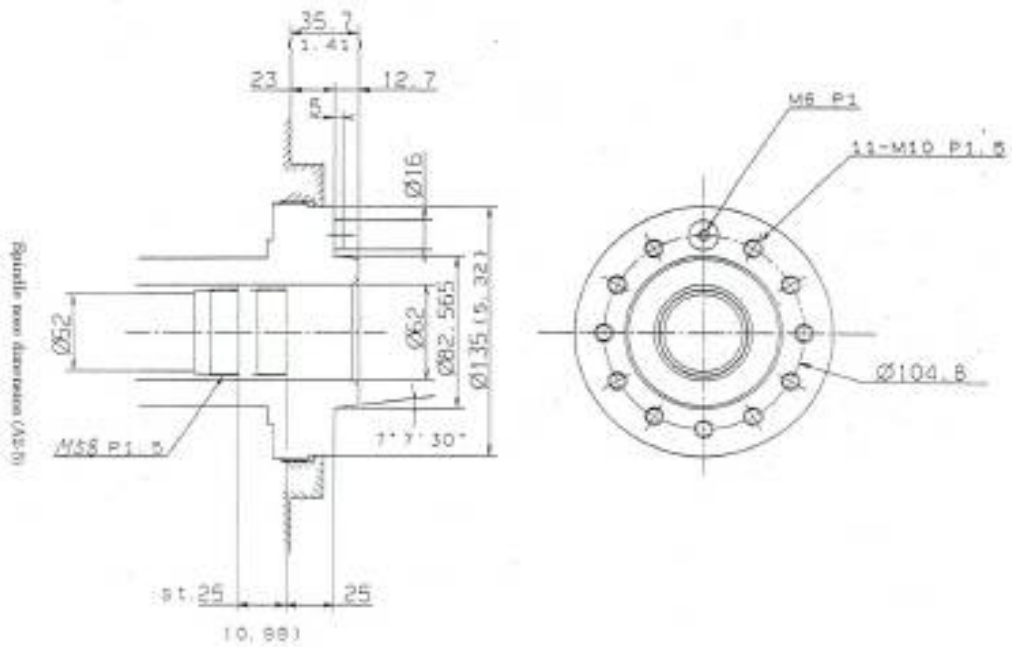
**PLEASE FORWARD THIS TO THE APPROPRIATE PERSON. THANK YOU.**



General view (standard)

NAKAMURA-TOME Precision Industry Co., Ltd.  
SC150-13

NASAMERICA-TORNE Precision Industry Co., Ltd.  
SC18014



Milling motor for Live tools

Milling motor speed-torque output graph (Power = 2.172kW)

NASAMERICA-TORNE Precision Industry Co., Ltd.  
SC18015

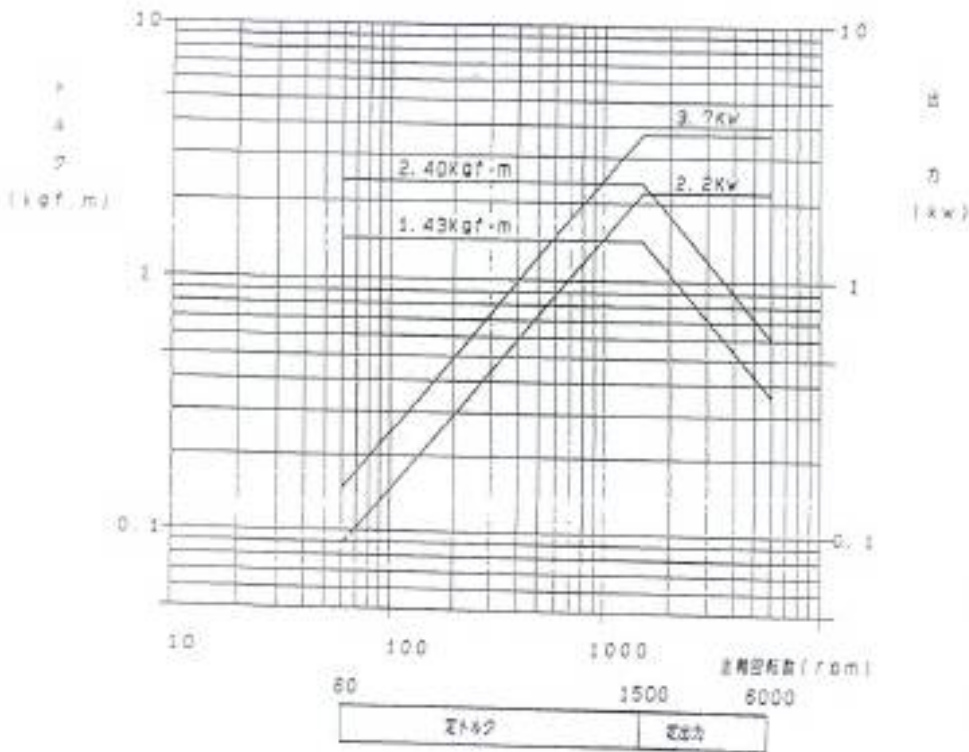


Table 4-9 Recommended Oil Table

| Maker                       | Lubricating Oil                  | Hydraulic Oil                | Grease                             |                                       | Lubricating Oil                |
|-----------------------------|----------------------------------|------------------------------|------------------------------------|---------------------------------------|--------------------------------|
|                             | VG68                             | VG32                         |                                    |                                       | VG320                          |
| Idemitsu                    | Daphne Super Multi Oil 68        | Daphne Super Multi Oil 32    | Daphne Molybdenum grease           | Daphne Super Coronex No.2             | Daphne Super Gear Oil 320      |
| Shell                       | Tonna Oil T68 or A-R Oil 68      | Tellus Oil C32 or J-H Oil 32 | Lethinax AM or Sunlight grease MB2 | Alvania Grease 2 or Sunlight Grease 2 | Omala Oil 320 or G-C Oil 320SE |
| Mobil                       | Mobil Vactra Oil No. 2           | Mobil DTE Oil Light          | Mobil Grease Special               | Mobil Mobilux 2                       | Mobil Gear 632                 |
| Mitsubishi                  | Diamond slide-way 68             | Diamond Lub RO32             | Diamond Multi purpose M grease 2   | Diamond Multi Purpose grease No.2     | Diamond gear Lub 320           |
| Fuji                        | Lubmulti 68                      | Lubmulti 32                  |                                    | Mighty grease No.2                    | Mild EP Gear 320               |
| Nisseki                     | Uniway 68                        | FBK Oil R032                 | Molynoc grease 2                   | Multinoc grease 2                     | Bonnoc SP320                   |
| Cosmo                       | Mightyway 68                     | Hydro RO32                   | Molybdenum grease                  | Grease Dynamax Super No.2             | Cosmo gear SE320               |
| Exxon                       | Febis K68                        | Terreso 32                   | Beacon Q2                          | Lithtan 2                             | Spartan EP320                  |
| Kygnus                      | Waylubricant 80                  | Unit Oil P32                 | M-5 Grease No. 2                   | MP Grease No. 2                       |                                |
| Kyodo                       | Slidus 68                        | RIX turbine 32               | Lisonix grease M-2                 | Lisonix grease 2                      | Reductus 320                   |
| General                     | Slideoil 68                      | General panol 32             | Gemico grease AD-2                 | Gemico grease MP-2                    | SP GEAROL 320                  |
| Mitsui                      | Slideway E68                     | Hydic oil 32                 |                                    | Multi grease EP-2                     | Mild gear EP320                |
| NOK Fleuber                 |                                  |                              | Multemp Q NB50                     |                                       |                                |
| Three bond                  |                                  |                              | Three bond 1901                    |                                       |                                |
| Castrol                     | Magnaglide BD68                  | Hyspin AWS32                 | Spheerol LMM                       | Spheerol AP2                          | Alpha SP320                    |
| Remark (Oiling drive Point) | Centralized lubricating oil tank | Hydraulic oil tank           | Jaw chuck                          | Rotary tool holder<br>C-axis spline   | C-axis harmonic drive          |