



15150 25th Avenue North, Minneapolis, MN 55447-1981
 Phone 763-476-8600 Fax 763-476-4092
 Service Dept: MN-763-476-4191 IA-319-632-4288 NE-402-330-2323
 Visit us at: www.productivity.com Productivity is ISO 9001:2000 Certified

Productivity, Inc.®

VF-3SS or VF-4SS PRE-INSTALLATION CHECKLIST -Rev 1/2009

Installation of your new Haas VF-3SS, VF-3SSYT or VF-4SS w/12K RPM/30HP can be smooth and rapid if preparations are made prior to the delivery of your machine. Any questions regarding machine installation should be directed to our service department for clarification. We hope this checklist will aid in a rapid installation of your new machine. **NOTE: The following must be completed prior to our service technician arriving at your facility.**

- Power Requirements for your machine: 230v/3ph/28kVa 100 Amps (*460v/3ph/28kVa 50 Amp) Proper voltage per machine specifications should be ready at machine site. **Do NOT power up machine. A separate earth ground wire of the same conductor size as the input power must be connected to the chassis of the machine; must be supplied from the main plant ground. A local cold-water pipe or ground rod is not sufficient.** *NOTE: 460v requires an External Transformer. **The machine draws 70 Amps.**

*****NOTE: If you have purchased the 1000 psi High Pressure Coolant option, you will need a separate power source. 208-230v/3ph/20 Amp circuit is needed for the unit. The CNC does NOT provide the power source. Any questions, please contact our Service Department.*****

- Customer should furnish and have available the proper supply and types of lubricants required for machine operation.

ITEM	CAPACITY	FLUID TYPE
Coolant	55 Gal (80 Gal Tank Optional)	Water Soluble, synthetic
Way Lube	80 ounces	Mobil Vactra #2

You will need to have Coolant and lubricants on hand at the time of installation. Contact our Service Department for more information.

- Air lines should be routed to the machine location and operational for proper air pressure.

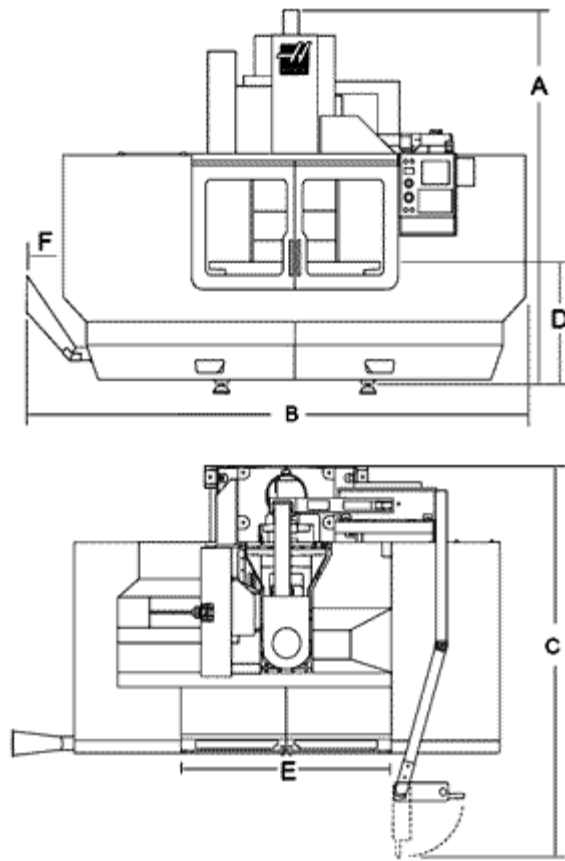
The VMC requires a minimum of 100 PSI at 4 scfm (w/optional AAG Auto Air Gun, 10 scfm) at the input to the pressure regulator on the back of the machine. This should be supplied by at least a 2-HP compressor, with a minimum 20-gal tank, that turns on when the pressure drops to 100 PSI. The air must be supplied through a minimum 3/8" I.D. hose and fittings must be at least 1/4" NPT.

- Machine location should be planned to allow enough room for access panels to be opened and serviced with ease. A minimum of 36" clearance around the machine is required for operator access and maintenance.
- Weight requirements should be checked to insure that the surface below the machine will have sufficient strength for support and stability. The machine must be set on a solid, sound and stable, steel bar-reinforced concrete slab poured directly on the grade. In general, the 6" concrete floor on industrial buildings is suitable for machine placement.
- **The Haas VF-3SS or VF-4SS should be moved with a forklift. Notify Hope immediately if you plan to use a crane. Upon arrival of your machine, uncrate and immediately check for visible damage.**

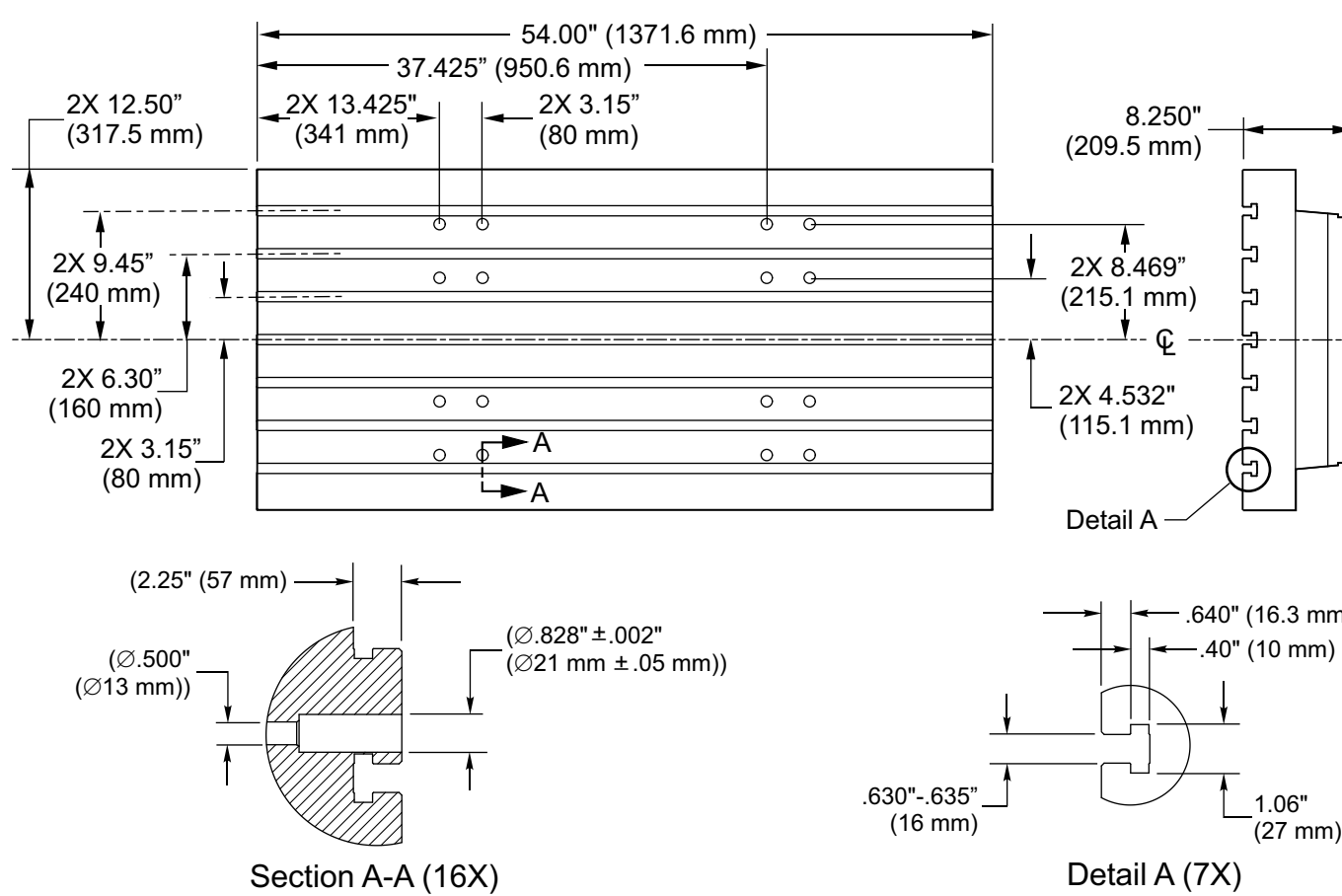
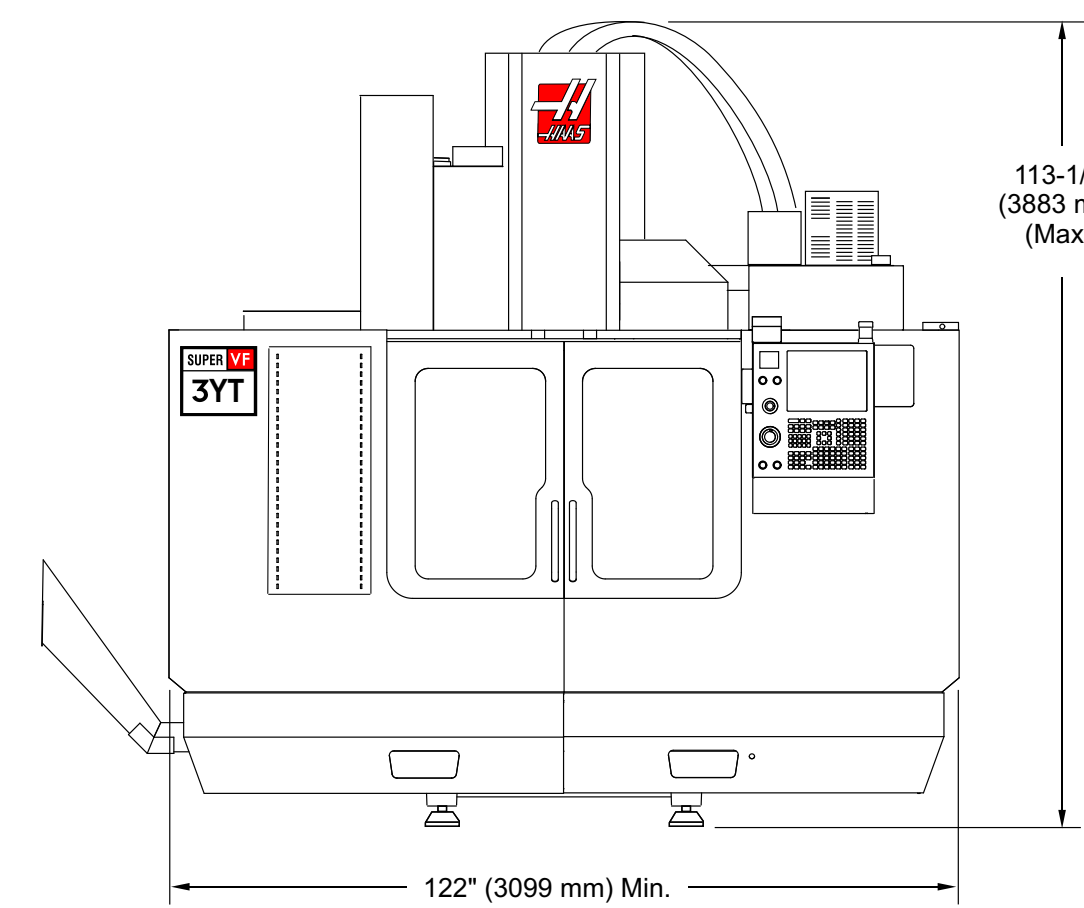
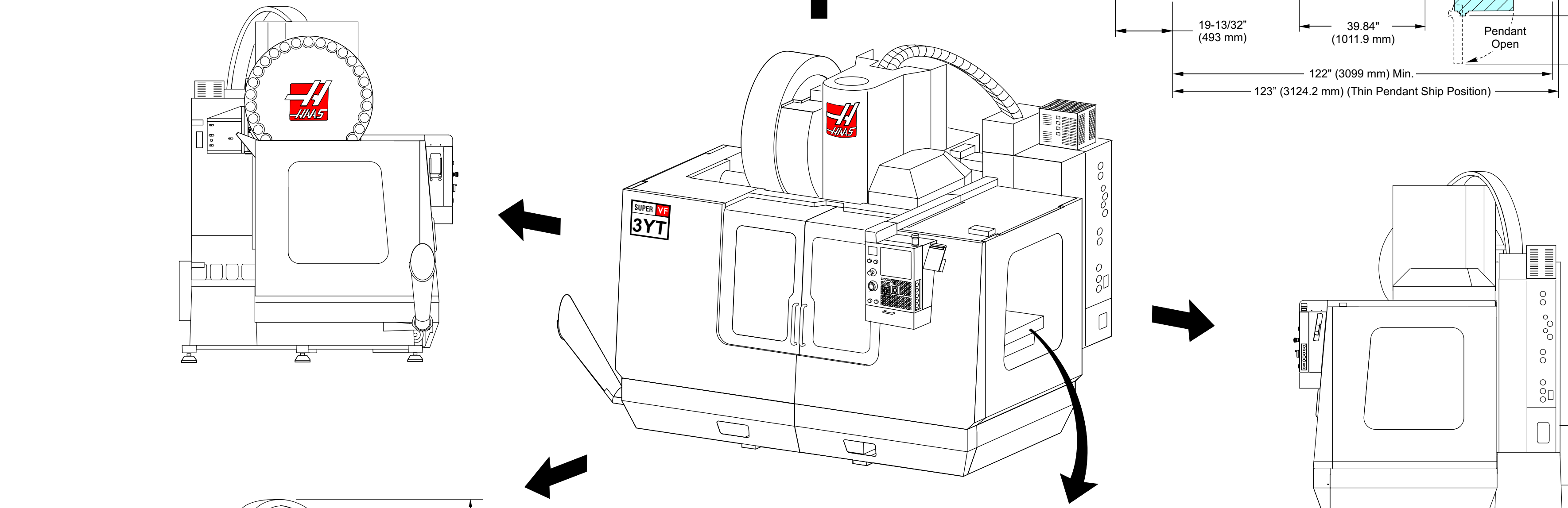
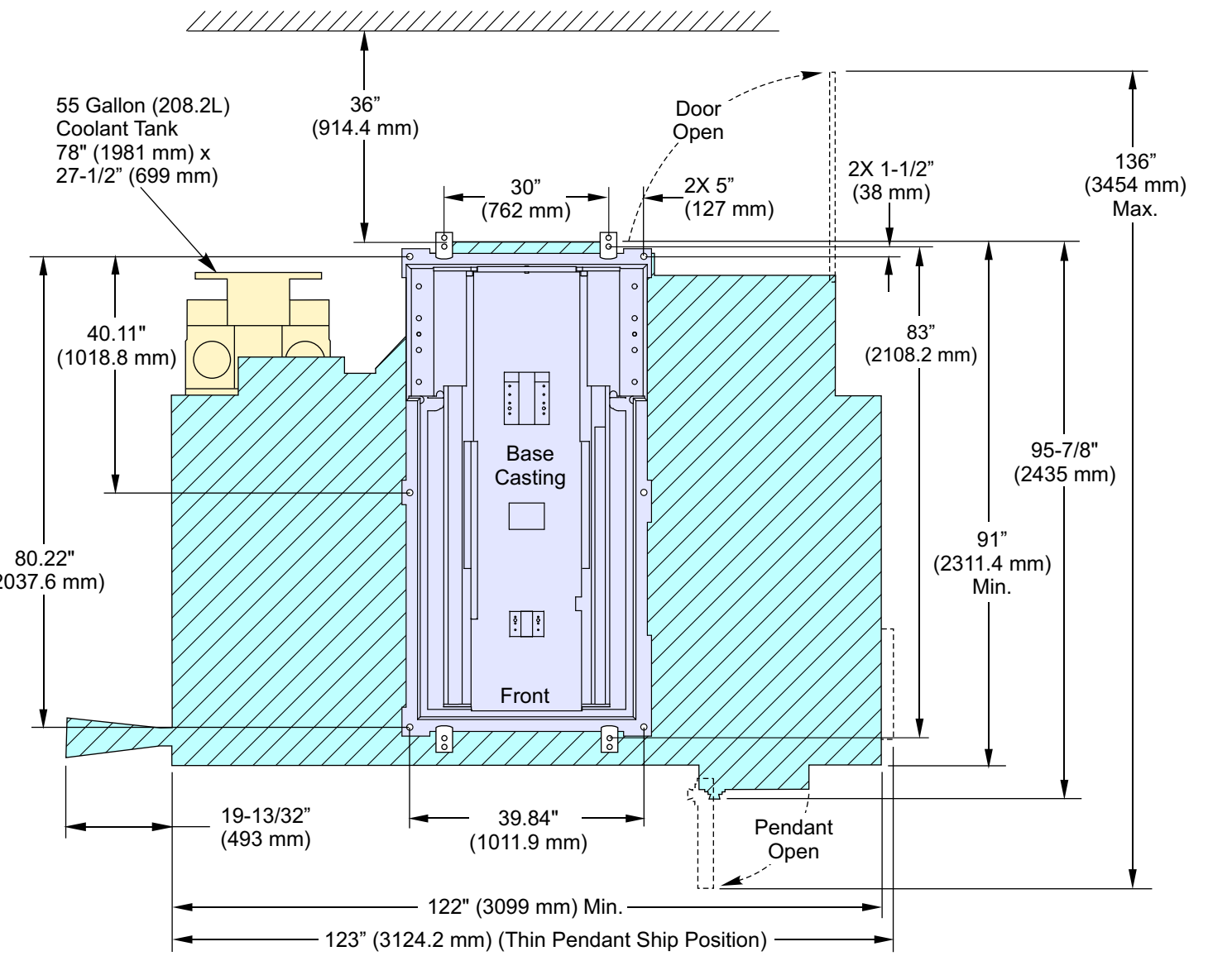
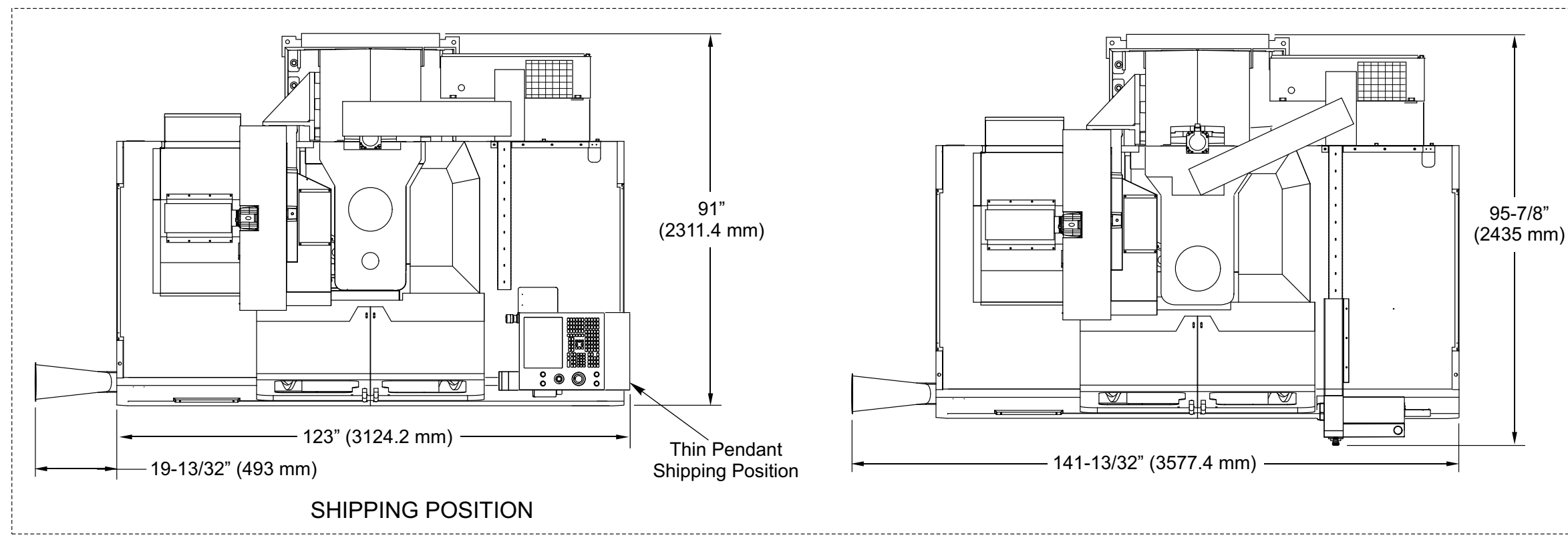
SHIPPING WEIGHT (Skidded/Wrapped)	SHIPPING DIMENSIONS OF MACHINE (Skidded/Wrapped) NOTE: Over 10'2" requires double-drop trailer.
14,800 # (VF-3SS or VF-4SS)	12'8" L x 8'6" W x 10'2" H (VF-3SS or VF-4SS)
16,580 # (VF-3SSYT)	12'8" L x 8'6" W x 10'3" H (VF-3SSYT)
See attached for layout/operational dimensions. (*Allow an additional 4' on the left side for the Chip Chute Disposal.) Operational Wt: 12,500# (VF-3SS) 13,300# (VF-4SS) 14,000# (VF-3SSYT)	

- Remove as much preservative from the machine as possible without having to power up (tables – slides, pulleys, etc.). We recommend mineral spirits to clean. Apply oil when finished to prevent rust.

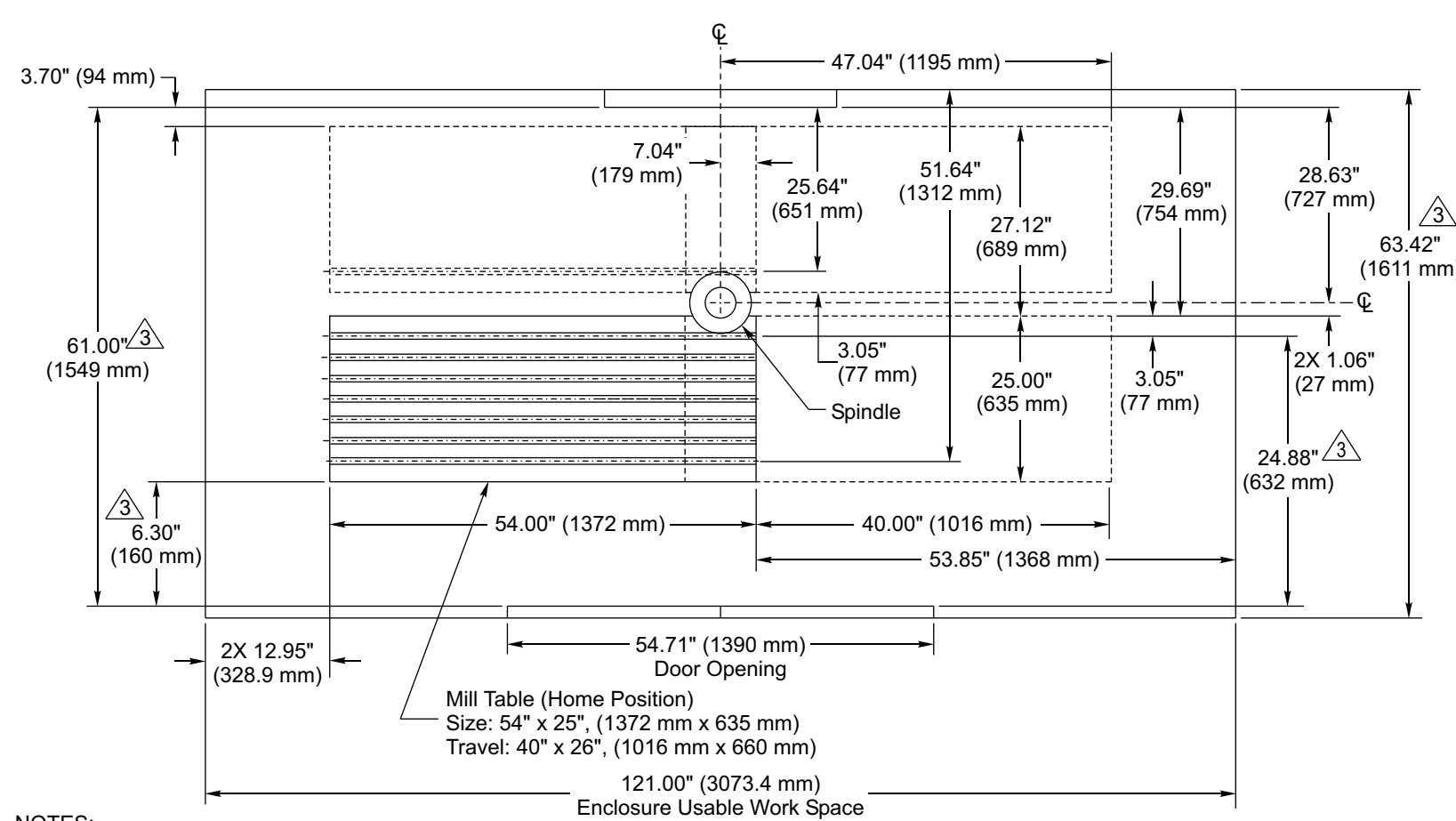
VF-3SS/VF-4SS Dimensions/Layout



	Mix View	
A NOTE: Add 4" when the EC3 or EC4 (Extended Z) option is purchased.	124 "	
B	142 " (VF-3SS) 150" (VF-4SS, VF-3SSYT)	
C	128 " (VF-3SS) 135" (VF-4SS, VF-3SSYT)	
D	37 "	
E	49 "	
F	20 " (VF-3SS, VF-3SSYT) 21" (VF-4SS)	



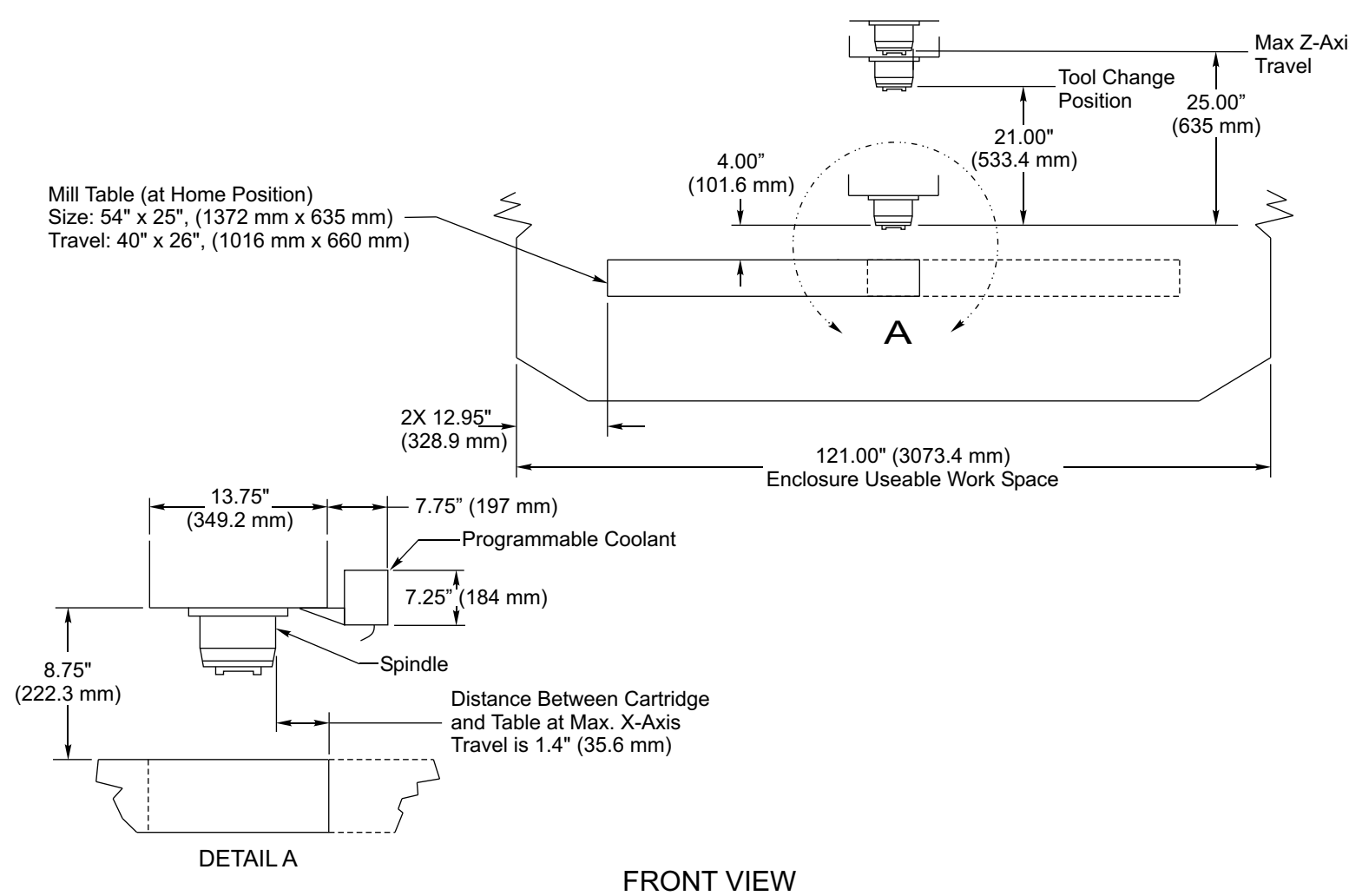
VF-3YT Table Dimensions



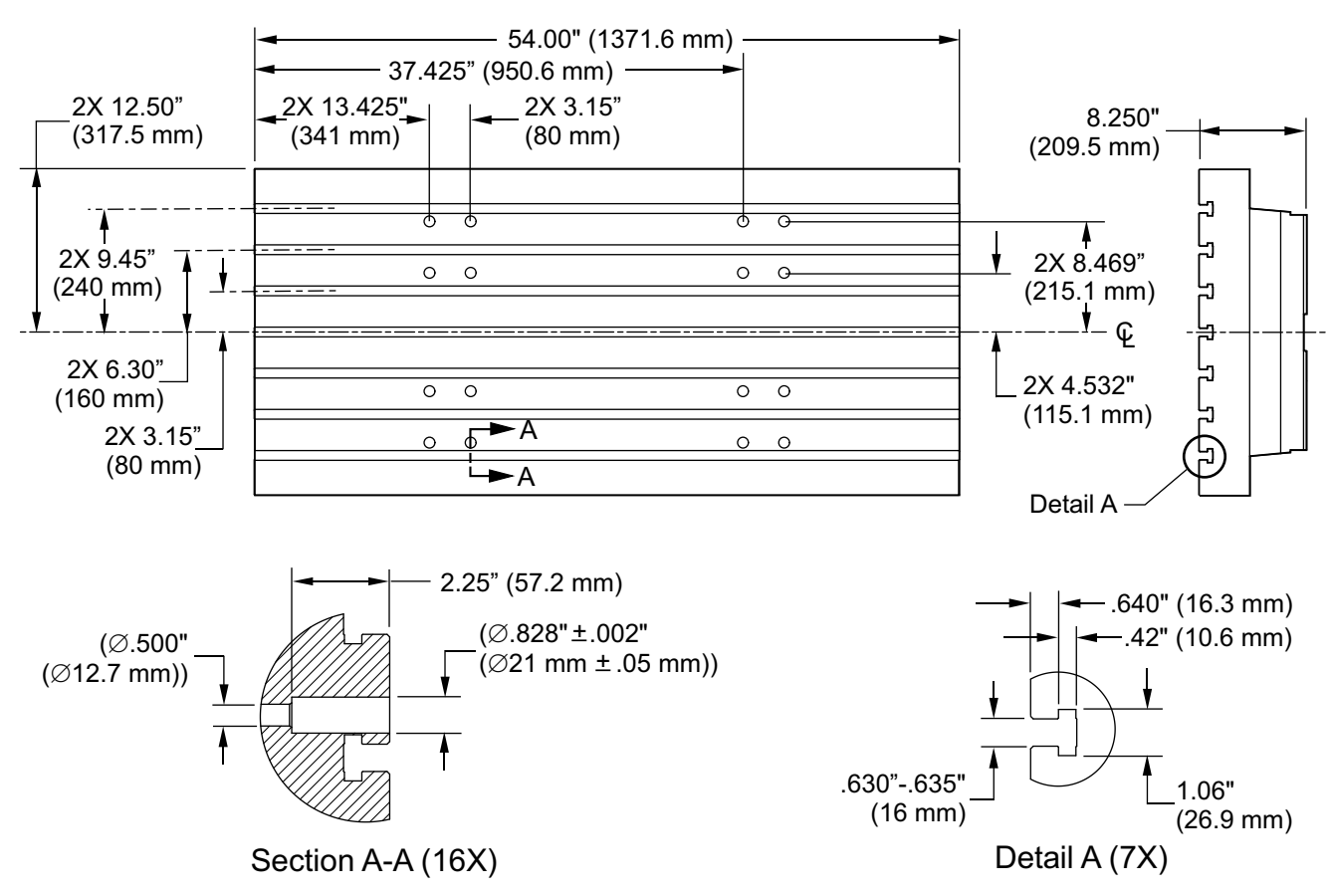
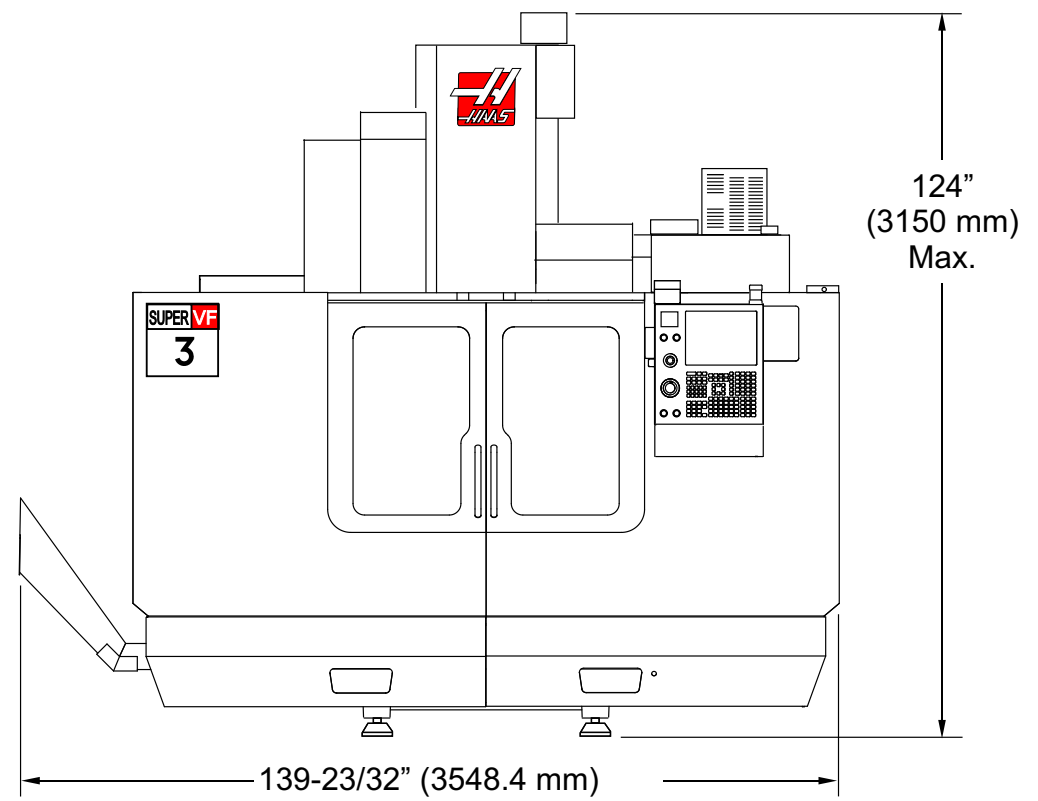
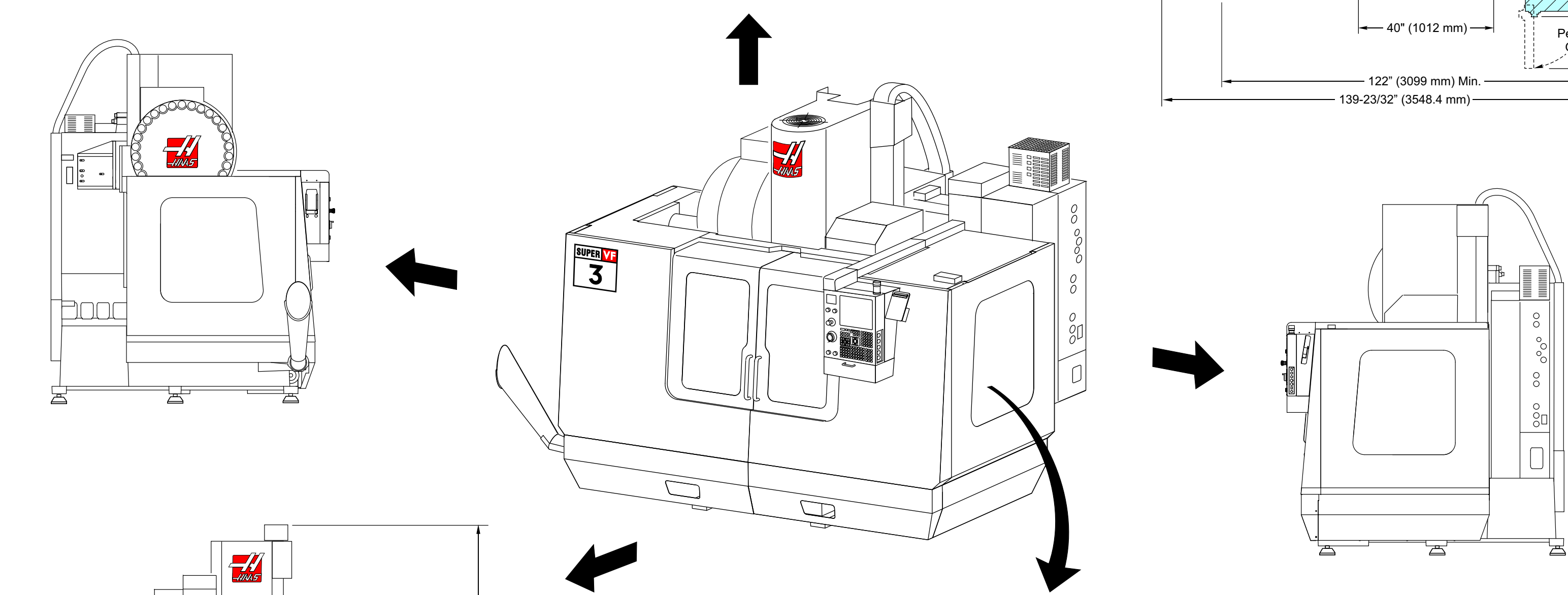
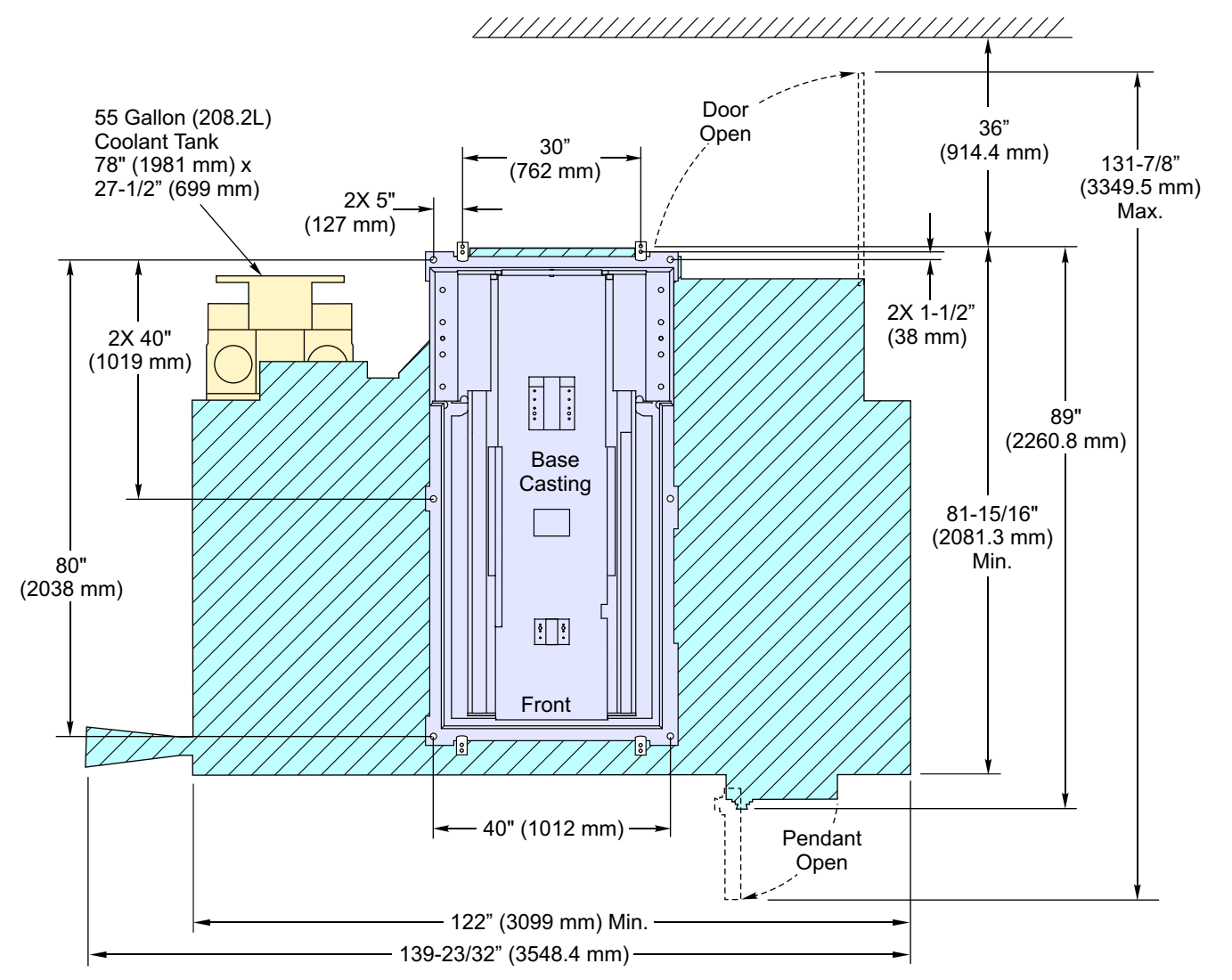
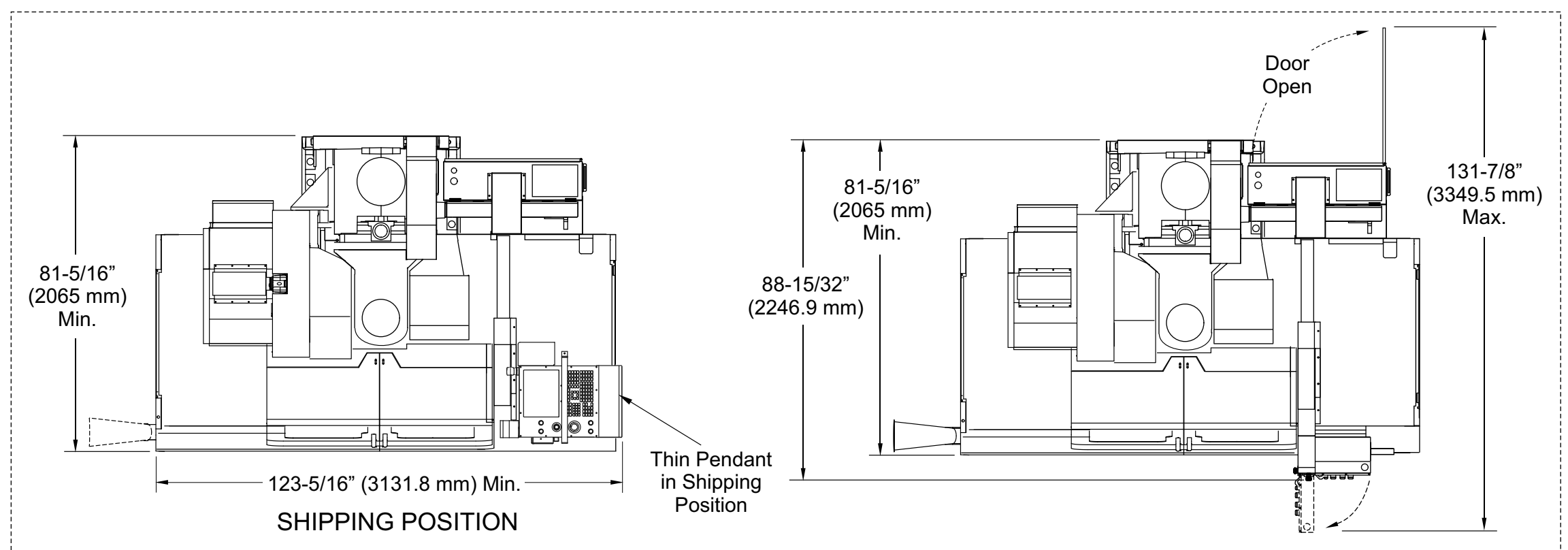
NOTES:

1. TABLE POSITION(S) AT MAX X & Y TRAVELS.
2. MEASUREMENTS ARE FROM THE EDGE OF MILL TABLE TO NEAREST OBSTRUCTION (ie. ENCLOSURE, WAY COVER, DOORS, ETC.).
3. DIMENSIONS ARE REDUCED AS HEIGHT ABOVE TABLE INCREASES; ie. FRONT OF ENCLOSURE IS SLOPED 5 INWARD FROM BOTTOM TO TOP. DIMENSIONS SHOWN ARE AT TABLE TOP HEIGHT.

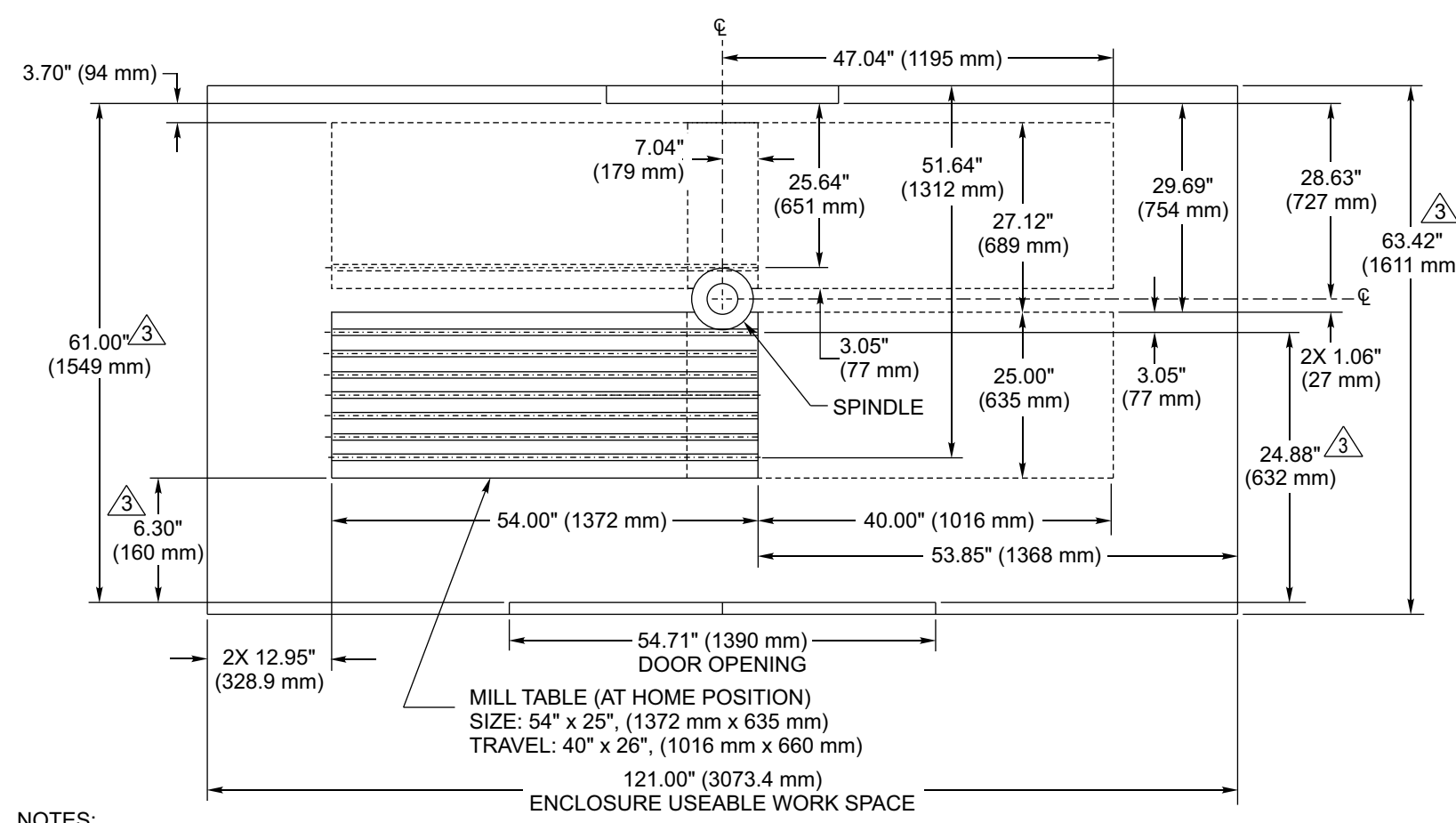
TOP VIEW



VF-3SSYT Enclosure Usable Work Space



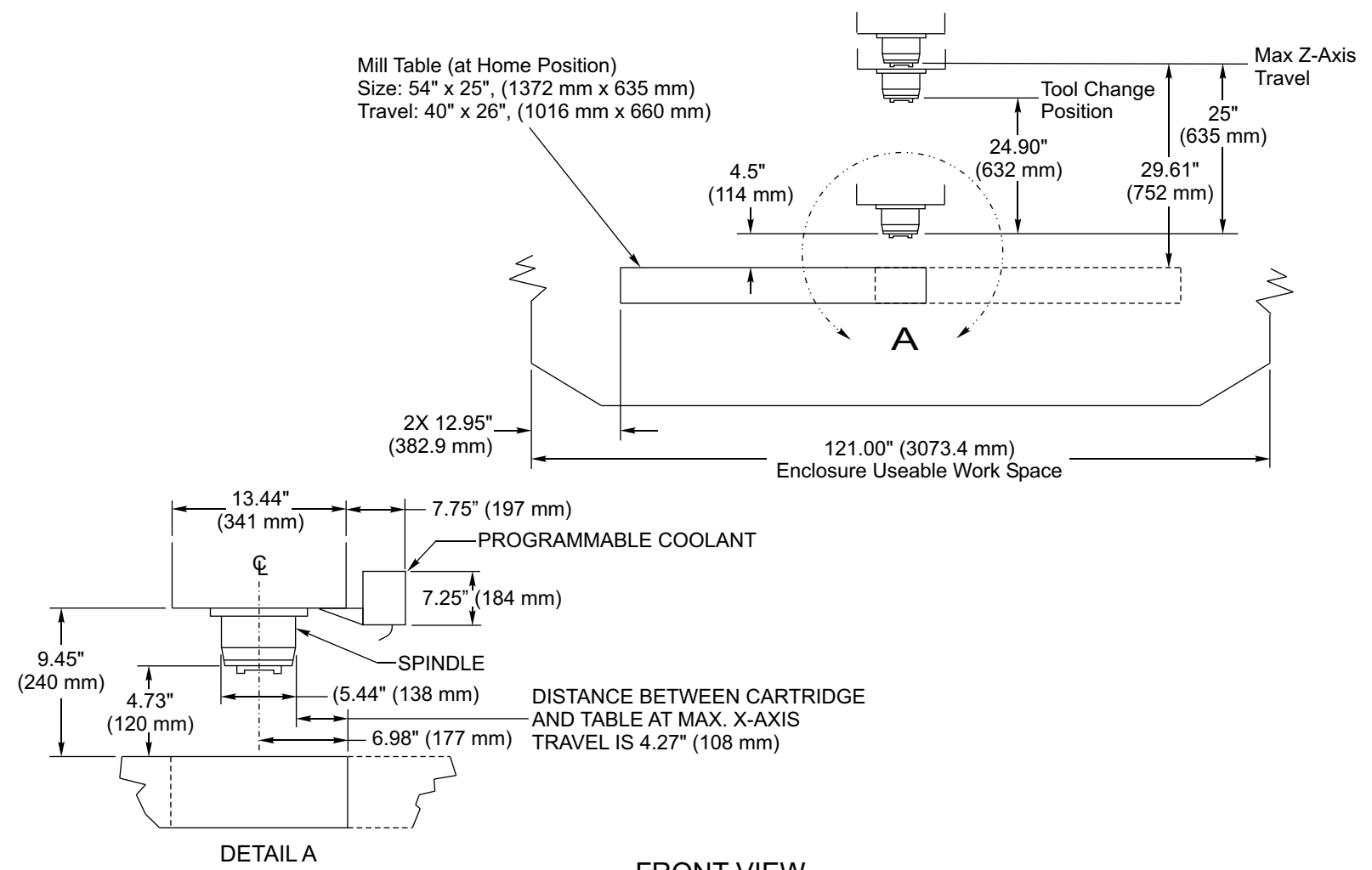
VF-3SS Table 20-3095A Dimensions



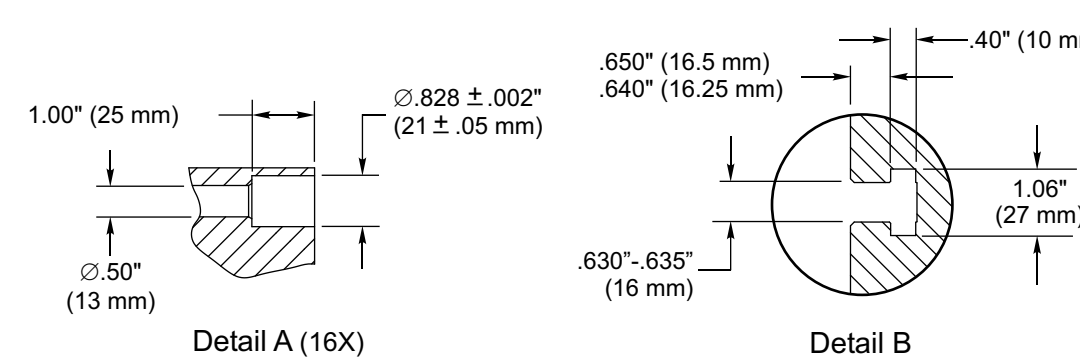
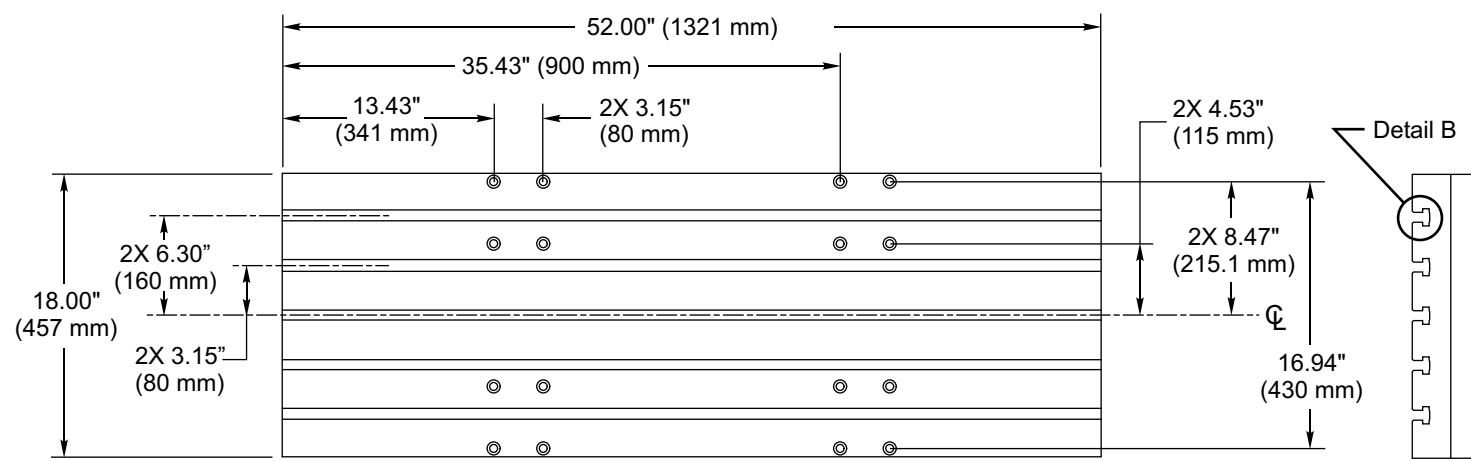
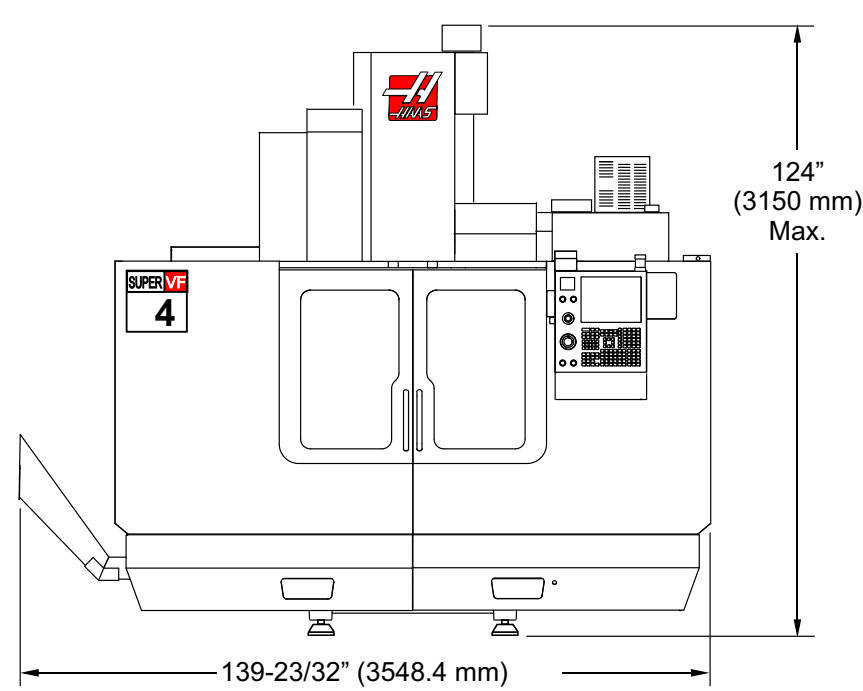
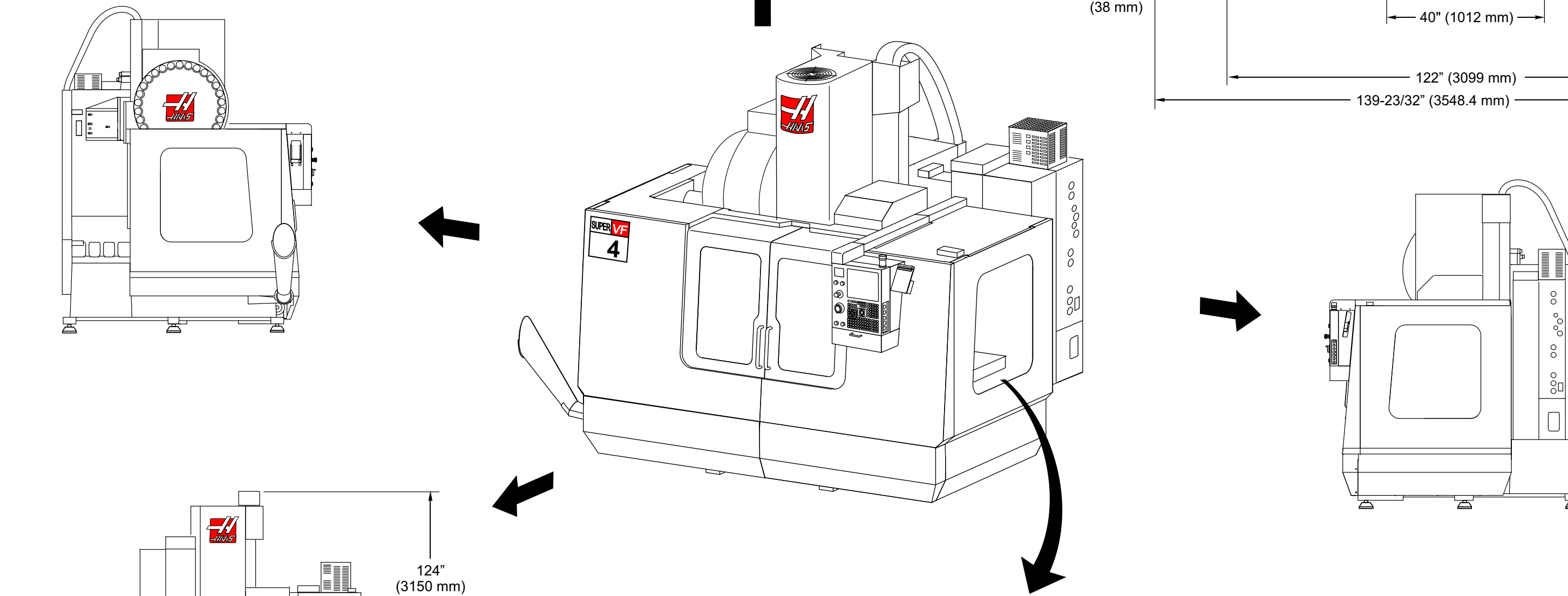
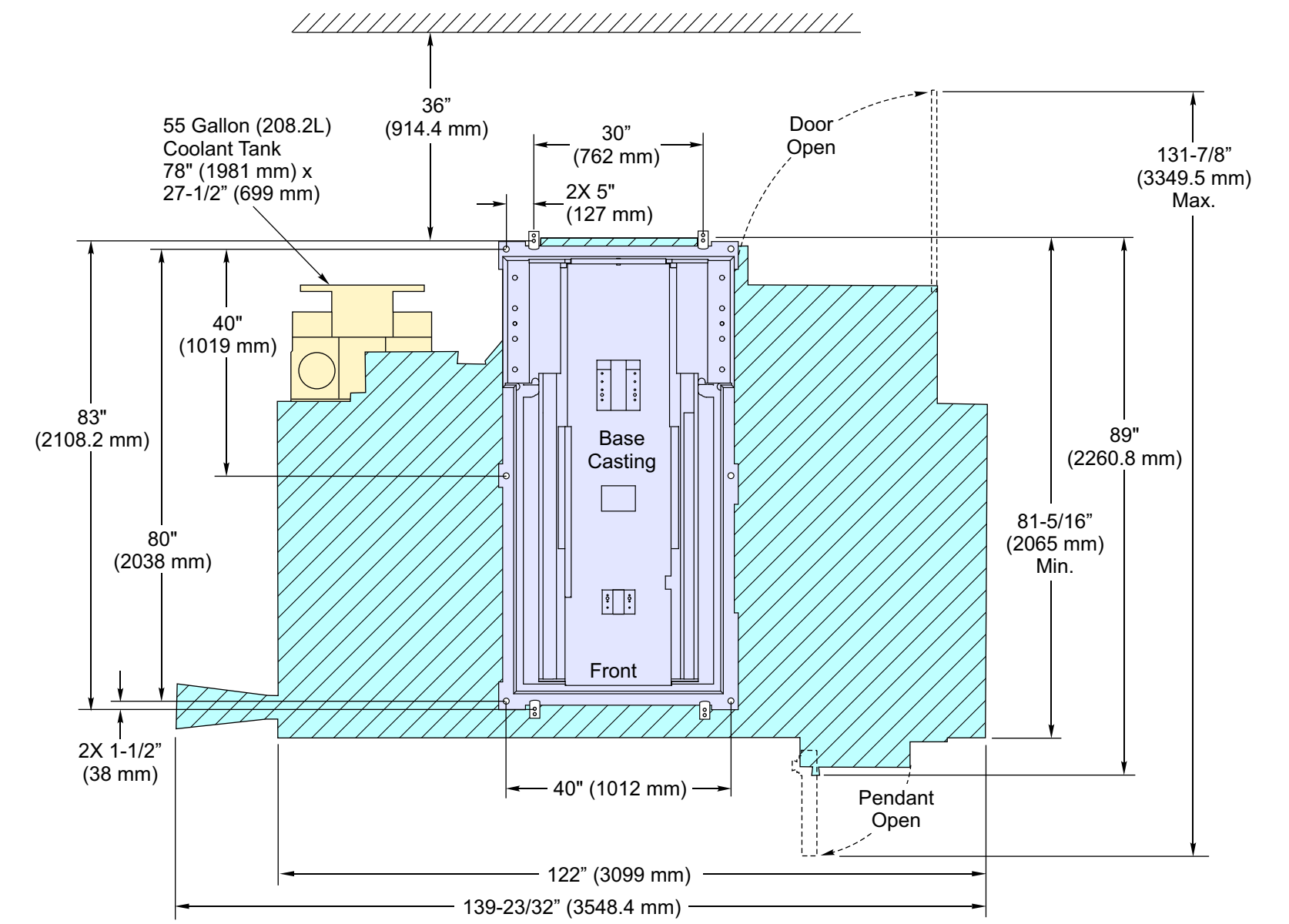
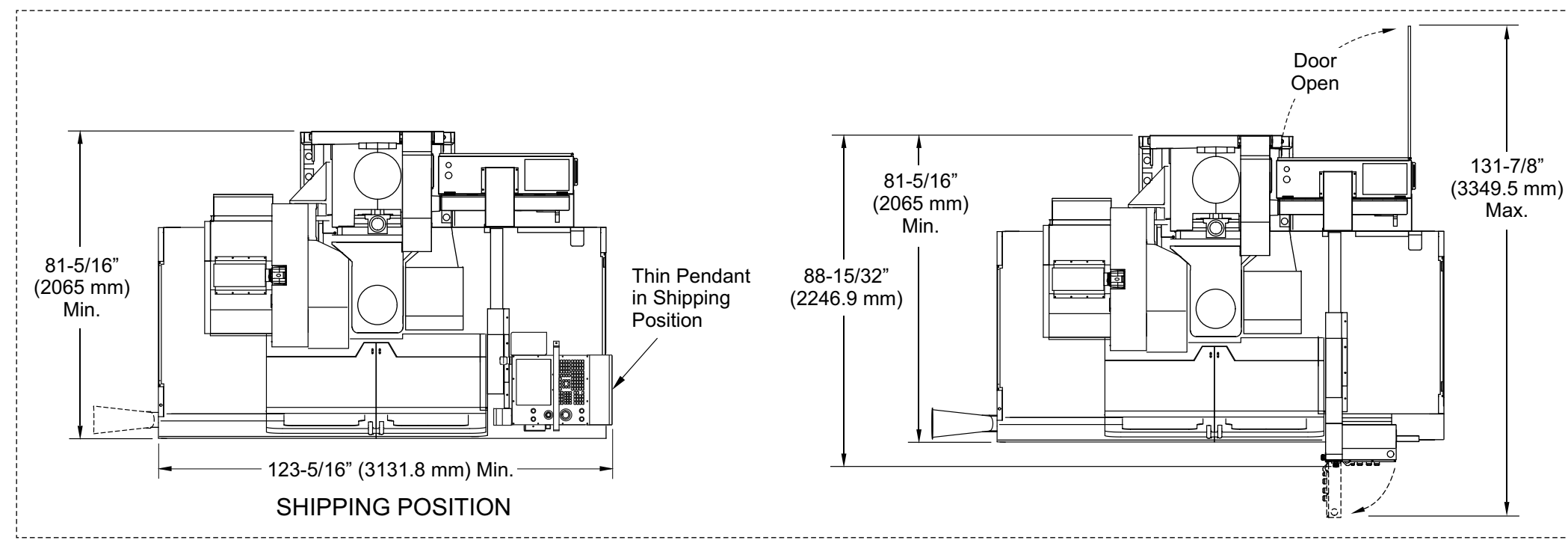
NOTES:

- TABLE POSITION(S) AT MAX X & Y TRAVELS.
- MEASUREMENTS ARE FROM THE EDGE OF MILL TABLE TO NEAREST OBSTRUCTION (ie. ENCLOSURE, WAY COVER, DOORS, ETC.).
- DIMENSIONS ARE REDUCED AS HEIGHT ABOVE TABLE INCREASES; ie. FRONT OF ENCLOSURE IS SLOPED 5° INWARD FROM BOTTOM TO TOP. DIMENSIONS SHOWN ARE AT TABLE TOP HEIGHT.

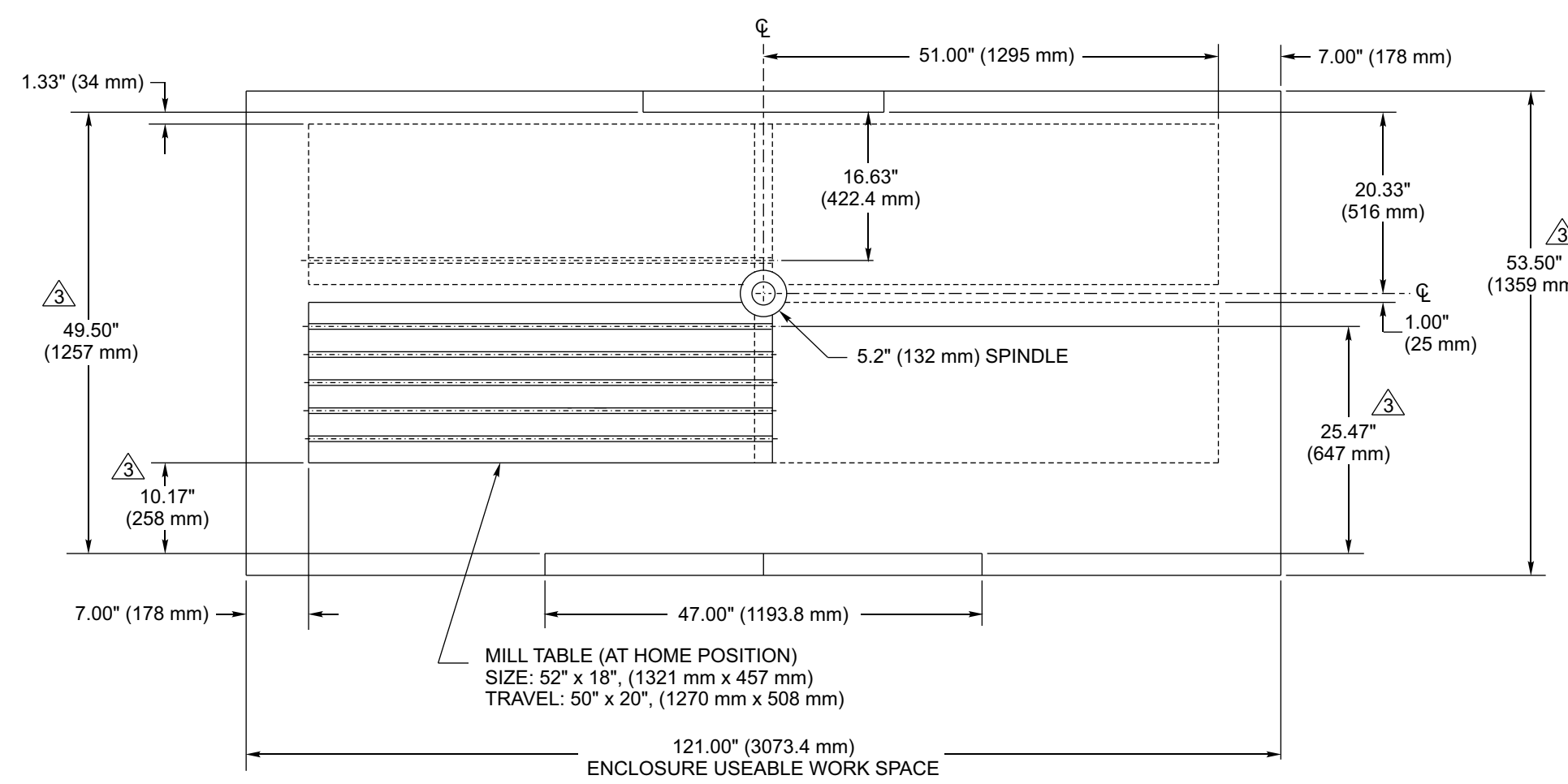
TOP VIEW



VF-3SS Enclosure Usable Work Space

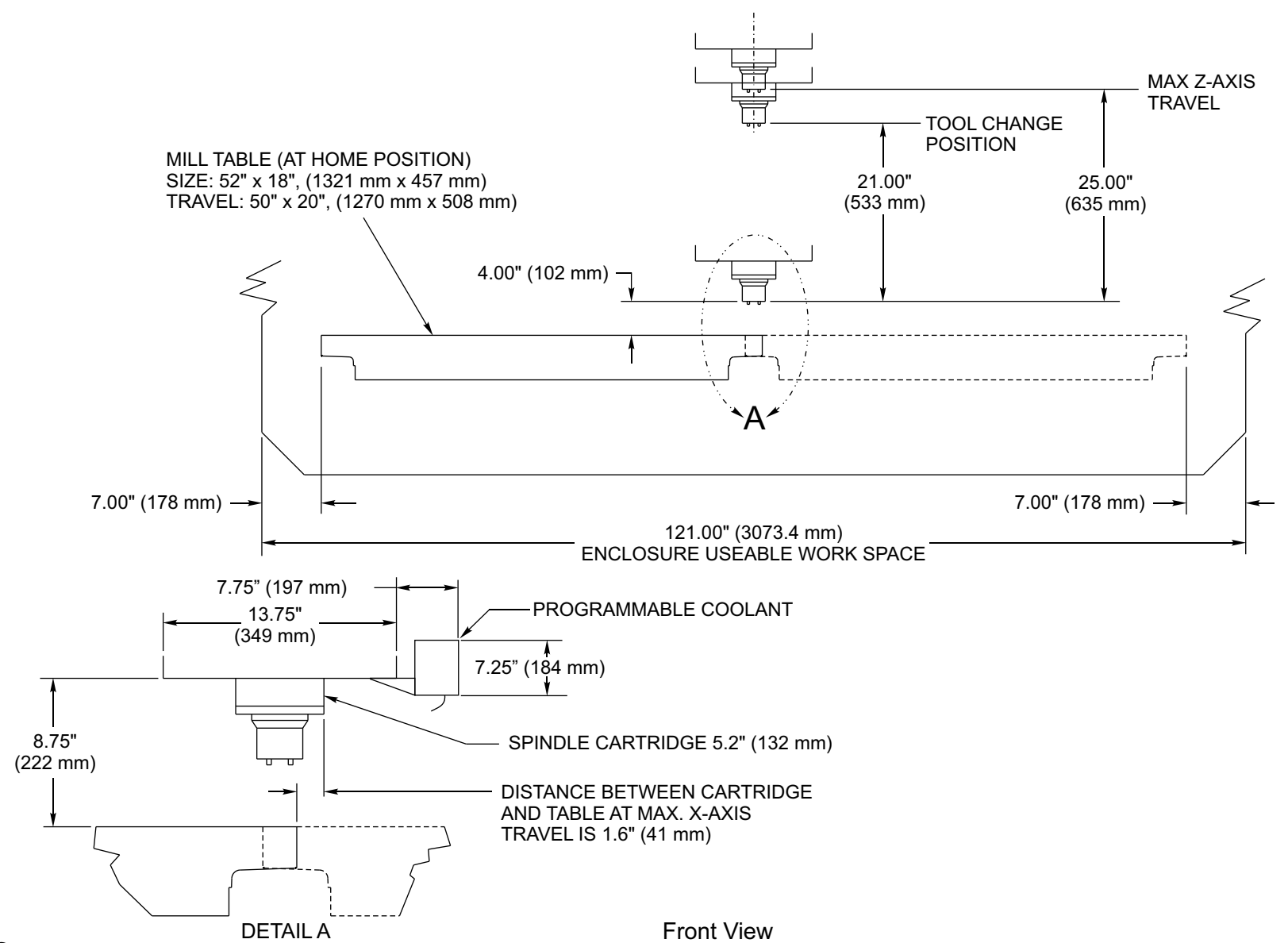


VF-4SS Table Dimensions



- NOTES:
1. TABLE POSITION(S) AT MAX X & Y TRAVELS.
 2. MEASUREMENTS ARE FROM THE EDGE OF MILL TABLE TO NEAREST OBSTRUCTION (ie. ENCLOSURE, WAY COVER, DOORS, ECT.).
 3. DIMENSIONS ARE REDUCED AS HEIGHT ABOVE TABLE INCREASES; ie. FRONT OF ENCLOSURE IS SLOPED 5 INWARD FROM BOTTOM TO TOP. DIMENSIONS SHOWN ARE AT TABLE TOP HEIGHT.

Top View



VF-4SS Enclosure Work Space